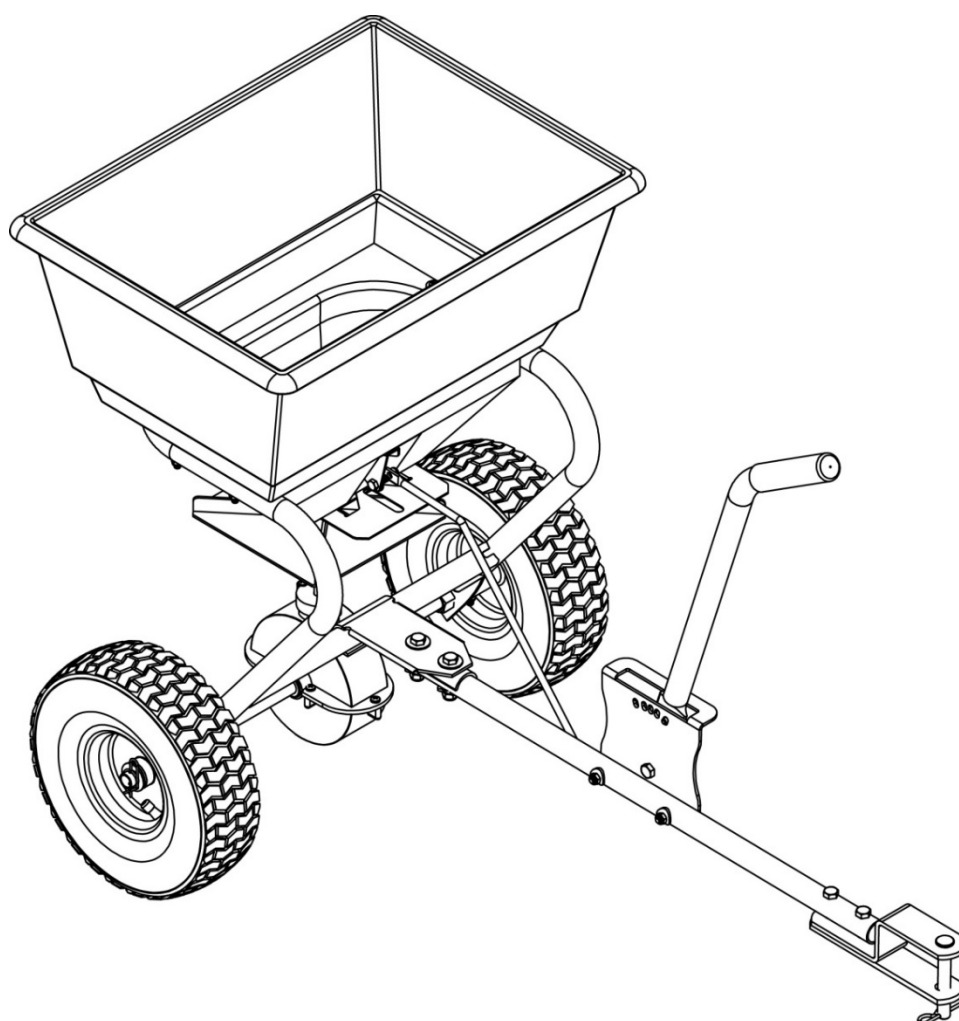


SEEDING TRAILER FOR LAWN TRACTOR

ATS60



MILASUR[®]

Millasur, SL.
Rúa Eduardo Pondal, nº 23 - Pol. Ind. Sigüeiro
15688 - Oroso - A Coruña - 981 696465 www.millasur.com

EN

CE

ANOVA wishes to congratulate you for choosing one of our products and guarantees the assistance and cooperation that has always distinguished our brand over time.

This machine is designed to last for many years and to be very useful if used in accordance with the instructions contained in the user manual. We therefore recommend that you read this instruction manual carefully and follow all our recommendations.

For more information or questions, you can contact us through our web supports such as www.anova.es and www.millasur.com

INFORMATION ABOUT THIS MANUAL

Pay attention to the information provided in this manual and on the machine for your safety and that of others.

- This manual contains instructions for use and maintenance.
- Take this manual with you when you go to work with the machine.
- Contents are correct at time of printing.
- The rights to make alterations are reserved at any time without affecting our legal responsibilities.
- This manual is considered an integral part of the product and should remain with it in the event of loan or resale.
- Ask your dealer for a new manual in case of loss or damage.

READ THIS MANUAL CAREFULLY BEFORE USING THE MACHINE

To ensure that your machine provides the best results, please read the usage and safety guidelines carefully before using it.

OTHER WARNINGS:

Incorrect use could cause damage to the machine or other objects. Adapting the machine to new technical requirements could cause differences between the content of this manual and the product purchased.

Read and follow all instructions in this manual. Failure to follow these instructions could result in serious personal injury.

■ Content

1. Safety warnings and general rules
2. Technical data
3. Components and parts of the ATS60 accessory
4. Assembly instructions
5. Maintenance and storage
6. Environment
7. Exploded view
8. CE conformity declaration

1. Safety warnings and general rules

Please read this manual carefully before using the seeding trailer for the riding mower. The operator must read and understand all safety and warning information, start-up instructions, maintenance and storage instructions before using this equipment. Failure to properly use and maintain this product could result in serious injury to the operator and bystanders.

Operation warnings

- Read the towing vehicle owner's manual and towing vehicle safety rules. Know how to operate your tractor before using the towed spreader.
- Read chemical label directions and precautions for handling and applying purchased chemicals for spreading.
- Wear eye and hand protection when handling and applying lawn or garden chemicals.
- Never operate the tractor and spreader attachment without wearing sturdy footwear, and do not allow anyone to ride or sit on the spreader attachment frame.
- Never allow children to operate the tractor or spreader attachment, and do not allow adults to operate it without proper instructions.
- Always start with the transmission in first (low) gear and the engine in low gear, gradually increasing speed as conditions allow.
- When towing the spreader, do not drive too close to a stream or ditch and be alert to holes and other hazards that could cause you to lose control of the spreader and tractor.
- Before operating the vehicle on any incline (hill), check the safety rules in the vehicle owner's manual.
- Tow only with recommended vehicles (lawn / garden tractors and ATV).
- Do not carry passengers sitting or standing on the lawn roller at any time.
- Do not allow children to play, stand or climb on the spreader.
- Do not exceed 125 lb rated capacity
- Replace or repair damaged or worn parts immediately.
- To avoid personal injury and / or equipment damage, do not exceed 5 MPH.
- Inspect the spreader before use to make sure it is in good working order.
- ALWAYS keep hands and feet away from moving parts while operating the equipment.
- Do not use if the spreader is damaged or worn, as this can cause injury to the operator or bystanders.
- Make sure the spreader is secure and locked in the approved vehicle hitch before operating.
- Never add material to the spreader unless it is connected to the tractor.

Cutting and crushing hazards

- Always keep hands and feet away from moving parts while using the equipment.
- Always clear and keep work area clean during use.
- Always wear safety equipment, eye protection, suitable clothing, gloves and work boots when using the equipment.





Warning

The warnings, cautions, and instructions described in this instruction manual cannot cover all possible conditions or situations that may occur. Common sense and caution are factors that must be present at all times.

Assembly required

This product requires assembly before use. See the "Mounting" section for more information.

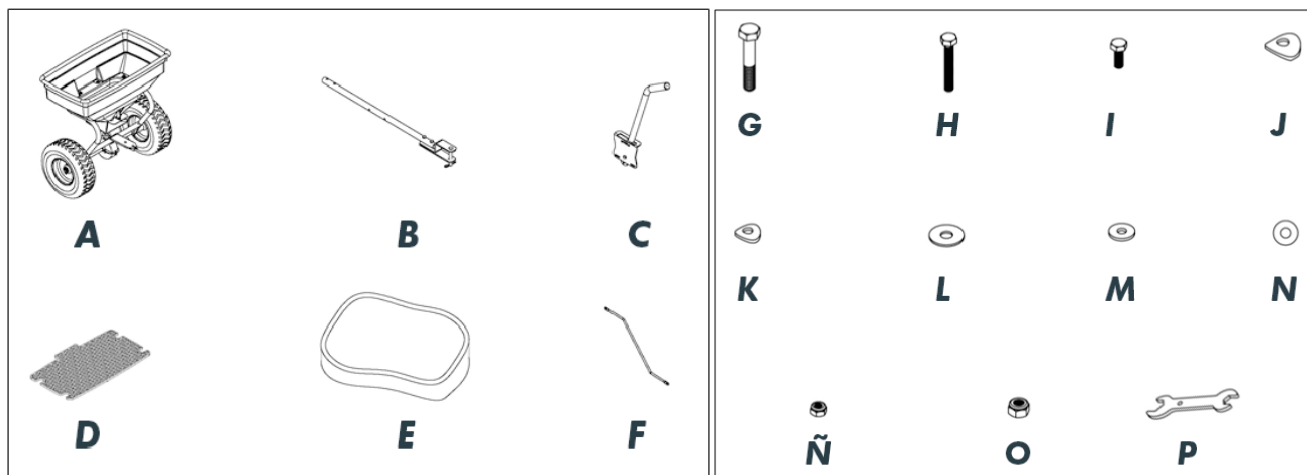
Definitions of Hazard Signal Words

| | |
|---|--|
|  | This is the safety alert symbol. It is used to alert you to potential personal injury hazards. Obey all safety messages that follow this symbol to avoid possible injury or death. |
|  DANGER | Danger - Indicates an imminently hazardous situation which, if not avoided, will result in death or serious injury. |
|  WARNING | Warning: Indicates a potentially hazardous situation which, if not avoided, could result in death or serious injury. |
|  CAUTION | Caution: Indicates a potentially hazardous situation which, if not avoided, may result in minor or moderate injury. |
| CAUTION | Caution: Without the safety alert symbol indicates a potentially dangerous situation which, if not avoided, could result in property damage. |

2. Technical data

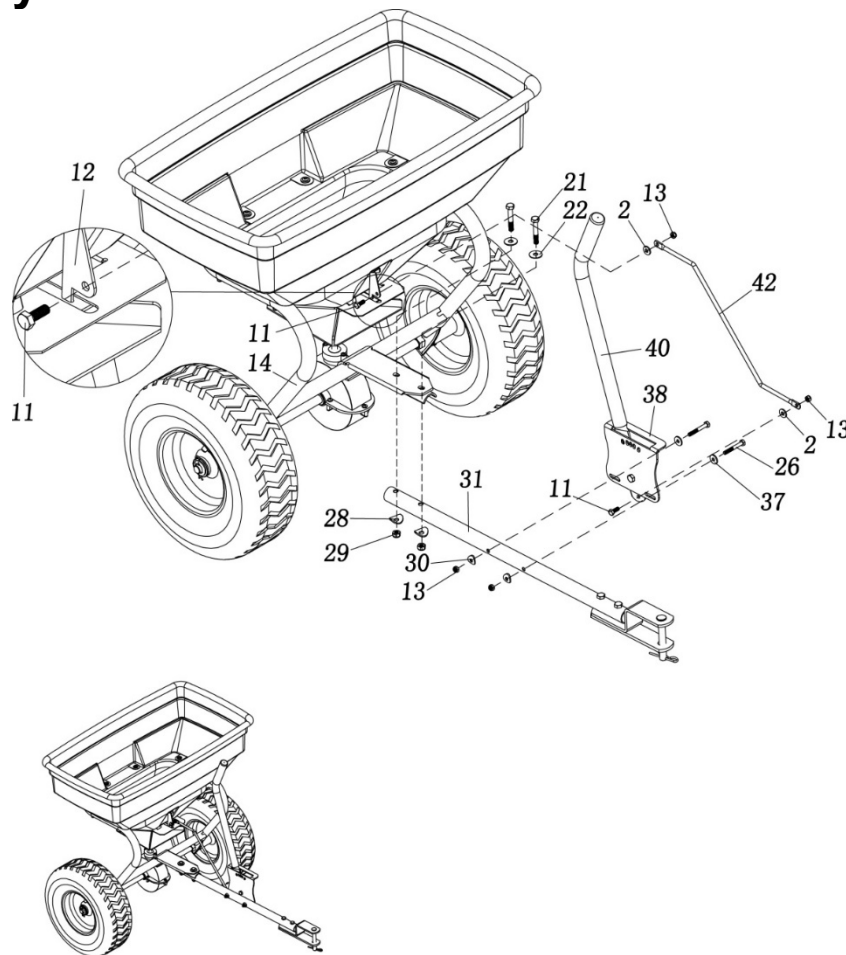
| Part | Description |
|------------------|---|
| Capacity | 125LB / 60L |
| Hopper dimension | 29-1 / 2in.x16-1 / 2in.x13-2 / 5in. (75x42x34cm) |
| Tow bar length | 29-1 / 8in. (74cm) |
| Net weight | 38.36lb / 17.4kg |
| Overall size | 42-1 / 8in.x30-1 / 4in.x30-3 / 8in (107x76.7x77cm) |
| Wheel diameter | 14-1 / 4in. (36cm) |
| Wheel width | 5-1 / 8in. (13cm) |

3. Components and parts of the ATS60 accessory



| Part | Quantity | Description |
|------|----------|---|
| TO | 1 | Trailer set |
| B | 1 | Tow bar |
| C | 1 | Gauge plate |
| D | 1 | Hopper screen |
| AND | 1 | Rain cover |
| F | 1 | Adjustable rod |
| G | 2 | Hex bolt M8x50 |
| H | 2 | Hex bolt M6x45 |
| I | 2 | Hex bolt M6x16 |
| J | 2 | Arc washer Ø8,5xØ24 |
| K | 2 | Arc washer Ø6,5xØ18 |
| L | 2 | Ø8 large flat washer |
| M | 2 | Large flat washer Ø6 |
| N | 2 | Nylon washer |
| Ñ | 4 | M6 lock nut |
| OR | 2 | M8 lock nut |
| P | 2 | 10mmx13mm wrench (x1) 10mmx14mm wrench (x1) |

4. Assembly instructions



Step 1:

- Attach Tow Bar (# 31) to Frame Tube Assembly (# 14) using M8x50 Hex Bolt (# 21), Ø8 Large Flat Washer (# 22), Ø8.5x Ø24 Arc Washer (# 28) and an M8 locknut (# 29).

Step 2:

- Attach the measuring plate (# 38) to the tow bar (# 31) using an M6x45 hex bolt (# 26), a Ø6 large flat washer (# 37), a Ø6.5x Ø18 arc washer (# 30) and an M6 locknut (# 13). Do not tighten the nuts.

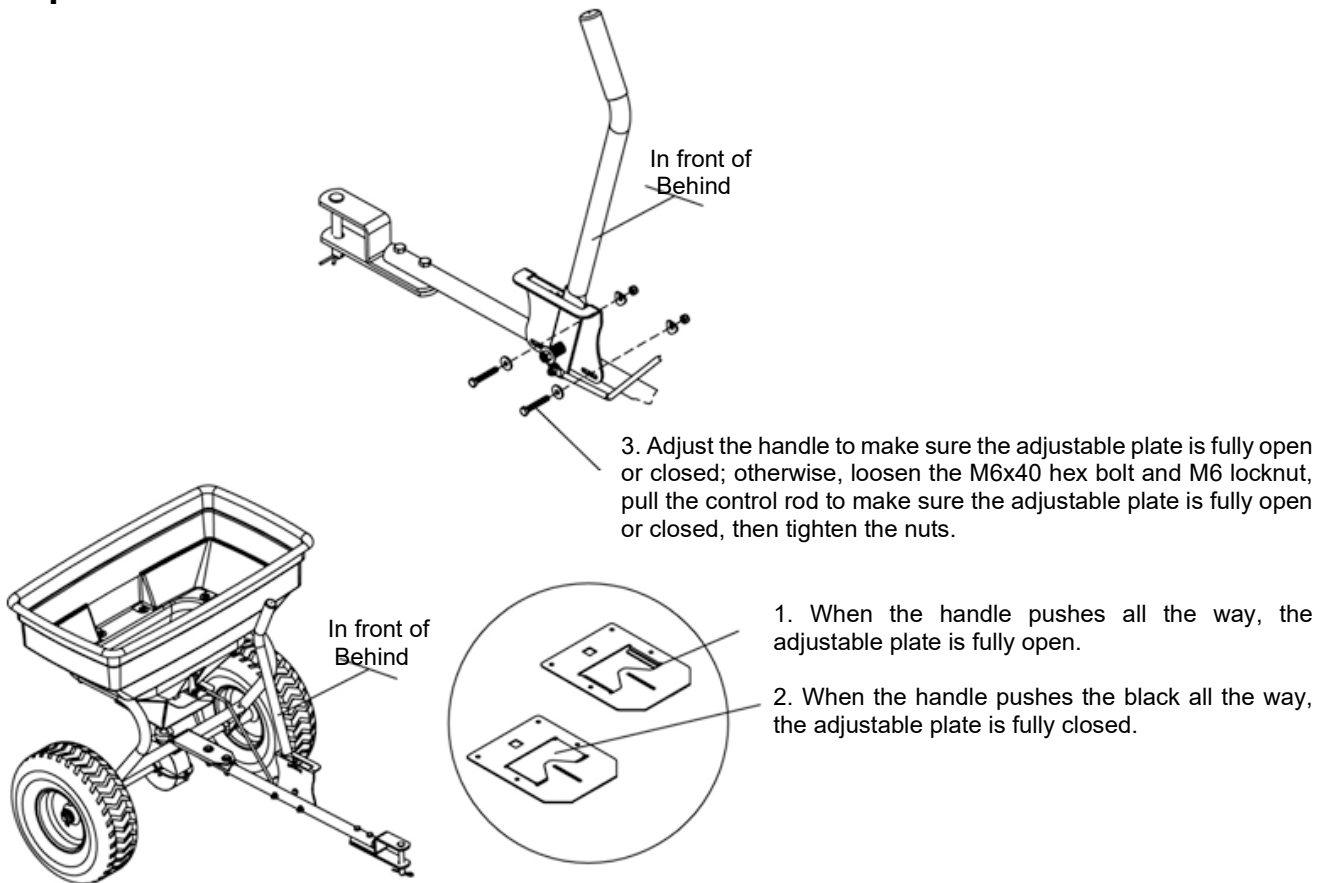
Step 3:

- Attach upper end of Adjustable Rod (# 42) to Attachment Plate for Adjustable Rod (# 12) using M6x16 Hex Bolt (# 11), Nylon Washer (# 2), and M6 Locknut (# 13). After tightening the locknut, turn 1/2 circle back.

Step 4:

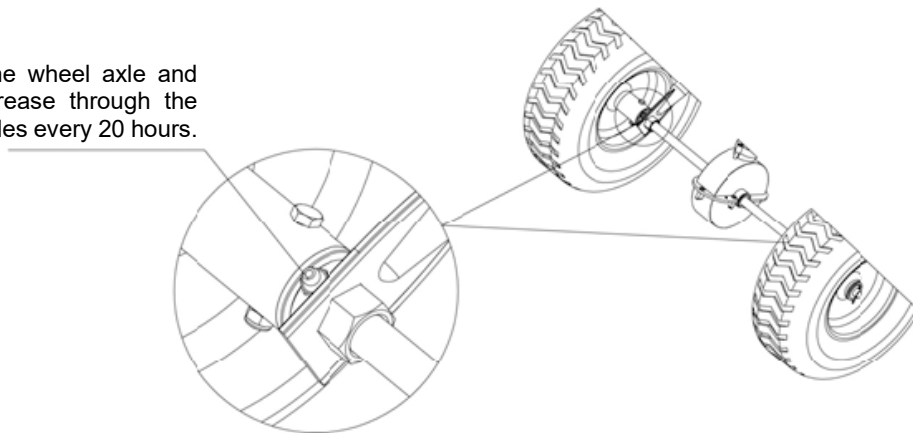
- Attach the lower end of the Adjustable Rod (# 42) to the Handle (# 40) using an M6x16 Hex Bolt (# 11), Nylon Washer (# 2), and M6 Locknut (# 13). After tightening the locknut, turn 1/2 circle back. Adjust the adjusting plate as required above, then tighten all bolts and nuts.

Step 5:



Step 6:

Lubricate the wheel axle and hub with grease through the grease nipples every 20 hours.



5. Maintenance and storage



Warning

Improper maintenance and storage of the sweeper may void your warranty.

Maintenance

- After each use, clean the material in the hopper.
- Rinse / dry the interior and exterior of the spreader after each use.
- Before operating, make sure the tires are at the recommended pressure.
- Periodically check all bras to see if they are tight.

- Clean annually and lightly lubricate parts.
- Use a gloss enamel spray paint to touch up scratched or worn painted metal surfaces.
- Never exceed the rated load capacity of 125 pounds, as it will damage the spreader.



Important

If a part needs to be replaced, use only parts that meet the manufacturer's specifications. Replacement parts that do not meet specifications can result in a safety hazard or poor performance.

Note: To remove the wheel, use a screwdriver to remove the hub cap, remove the locknut and washer.

Storage

- Never allow material to remain in the hopper for long periods of time.
- Before storing, make sure the spreader is clean and dry for years of trouble-free service.
- Store indoors or in a sheltered area during severe weather and winter months.



Warning

Always maintain proper tire pressure. Do not over or under inflate the tires, as serious injury may result. Always keep the tires at 25 PSI.

6. Environment



Protect the environment. Recycle the oil used by this machine by taking it to a recycling center. Do not pour used oil into drains, land, rivers, lakes or seas.



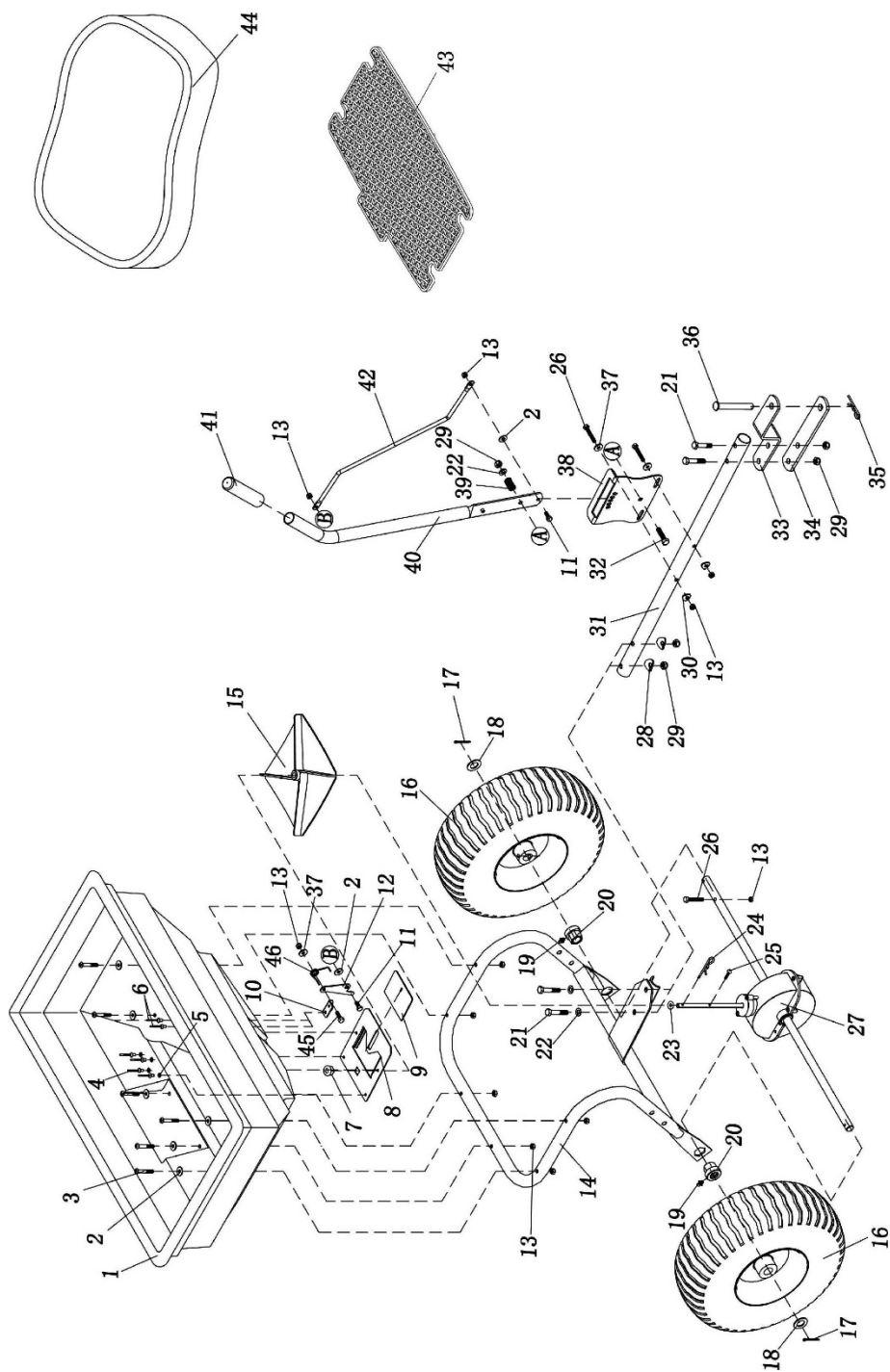
Dispose of your machine in an environmentally friendly way. We must not dispose of machines together with household garbage. Its plastic and metal components can be classified according to their nature and recycled.

The materials used to pack this machine are recyclable. Please do not dispose of the packaging in the household waste. Dispose of these packages at an official waste collection point.

7. Exploded view

ALNOVA

ATS60



8. CE conformity declaration

DISTRIBUTION COMPANY

MILLASUR, SL
RUA EDUARDO PONDAL, Nº 23 PISIGÜEIRO
15688 OROSO - A CORUÑA
SPAIN



ALNOVA

CE DECLARATION OF CONFORMITY

In compliance with the different CE directives, it is hereby confirmed that, due to its design and construction, and according to the CE mark printed by the manufacturer on it, the machine identified in this document complies with the relevant and fundamental requirements in health and safety. of the aforementioned CE directives. This declaration validates the product to display the CE symbol.

In the event that the machine is modified and this modification is not approved by the manufacturer and communicated to the distributor, this declaration will lose its value and validity.

Machine name: **LAWN TRACTOR SEEDER TRAILER**

Model: ATS60

Recognized and approved standard to which it conforms:

directive 2006/42 / EC

Tested according to the standards:

EN ISO 12100: 2010

Company seal

MILLASUR, S.L.U.

Rúa Eduardo Pondal,23 - Pol.EMP..Sigüeiro
15688-Oroso-A Coruña

Tel.(+34) 981 69 64 65 - Fax (+34) 981 69 08 61

e-mail: millasur@millasur.com

CIF: B-15 749 922

09/04/2021