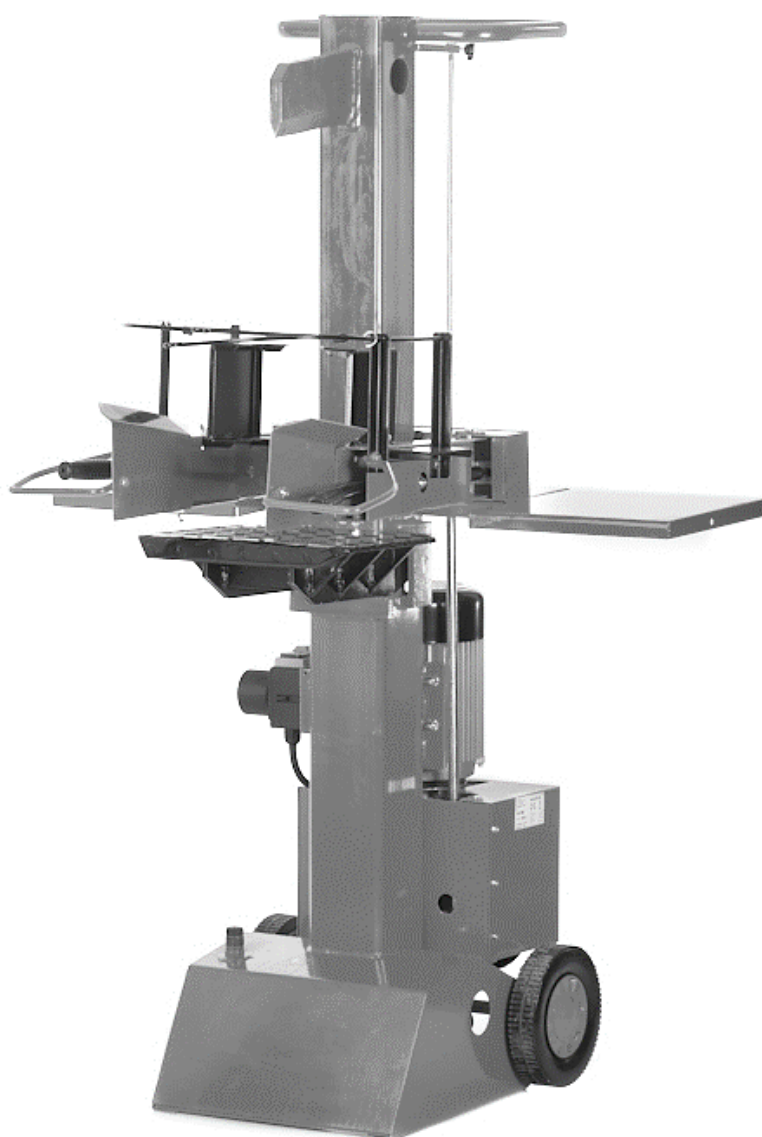


Electric log splitter

RLT8C

ANOVA[®]

Instructions and user manual



EN

Millasur S.L.U.
Rúa Eduardo Pondal, nº 23 - Pol. Ind. Sigüeiro
15688 - Oroso - A Coruña - 981 696 465 - www.millasur.com



CE



Anova wishes to congratulate you for having chosen one of our products and guarantees you the assistance and cooperation that has always distinguished our brand over time.

This machine is designed to last many years and to be very useful if it is used according to the instructions contained in the user manual. We therefore recommend that you read this instruction manual carefully and follow all our recommendations.

For more information or questions, you can contact us through our web supports such as www.anova.es

INFORMATION ABOUT THIS MANUAL

Pay attention to the information provided in this manual and on the appliance for your safety and the safety of others.

- This manual contains instructions for use and maintenance.
- Take this manual with you when you go to work on the machine.
- The contents are correct at the time of printing.
- They reserve the rights to make alterations at any time without affecting our legal responsibilities.
- This manual is considered an integral part of the product and must remain with it in case of loan or resale.
- Ask your dealer for a new manual in case of loss or damage.

READ THIS MANUAL CAREFULLY BEFORE USING THE MACHINE



To ensure that your machine provides the best results, please read the use and safety regulations carefully before using it.

OTHER WARNINGS:

Incorrect use could cause damage to the machine or other objects.

The adaptation of the machine to new technical requirements could cause differences between the content of this manual and the purchased product.

Read and follow all instructions in this manual. Failure to follow these instructions could result in serious personal injury.

INDEX

1. SECURITY INSTRUCTIONS

- 1.1. Instructions for safe work
- 1.2. Scope of supply
- 1.3. Additional safety instructions
- 1.4. Residual risks
- 1.5. Safety symbols

2. TECHNICAL SPECIFICATIONS

3. PRODUCT DESCRIPTION

4. ASSEMBLY AND OPERATION

- 4.1. Mounting
- 4.2. Recommendations before use
- 4.3. Start up
- 4.4. Operating instructions
- 4.5. Special instructions for cutting logs

5. MAINTENANCE AND TRANSPORTATION

6. PROBLEM SOLVING

7. WARRANTY

8. ENVIRONMENT

9. EXPLODED

10. CE CERTIFICATE

1. SECURITY INSTRUCTIONS

1.1. Instructions for safe work

Important

Before operating this product, please read and follow the instructions below. To prevent injury to yourself and third parties, you must also follow the prevention regulations of your professional association and the safety regulations in force in your country.

Make sure that everyone who works with the equipment reads the safety instructions. Keep the instructions in a safe place for future reference.

- Be vigilant at all times, do not use the equipment if you are tired or under the influence of substances that affect your concentration. A moment of inattention is enough to cause serious injury.
- Familiarize yourself with the equipment before using it. Read and understand all instructions for use.
- Do not use the equipment for inappropriate jobs.
- Make sure you maintain a safe and balanced posture at all times.
- Stay close to the control knobs.
- Never get on the team.
- When working with the machine, always wear:
 - o Safety glasses or a full-face mask.
 - o Safety gloves.
 - o Hearing protections.
 - o Steel toe safety footwear.

Do not wear loose clothing or jewelry of any kind as they can get caught or snagged.

- The operator is responsible for third parties within his work area.
- The use of this machine by children or those under 18 years of age is prohibited.
- Keep children away.
- Do not use the machine if there are people nearby.
- Never leave the machine unattended.
- Keep work area clear. Clutter can cause accidents.
- Do not overload the machine. The job will be done better and safer within established parameters.
- Use the machine only with the correct and properly attached safety accessories. Do not alter any part of the machine that could affect safety.
- Do not modify any part of the machine.
- Do not spray the machine with water; It is dangerous since there are components connected to the electrical network.
- Do not leave or use the machine in the rain.
- When not in use, store the machine in a dry and safe place, out of the reach of children.
- Turn off the engine and disconnect the machine from the mains in the following cases:
 - o When doing repair work.
 - o When performing maintenance or cleaning tasks.
 - o When connecting electrical wires.
 - o When I fix bugs.
 - o When transporting the machine.
 - o If the machine is going to be left unattended, even for short duration interruptions.

- Inspect the machine for possible faults.
 - o You must inspect the safety systems to ensure that they are working properly before you start using the machine.
 - o Check that all moving parts are in good condition, that they work properly and that there are no bindings. All parts must be correctly installed and comply with all standards to ensure proper operation of the machine.
 - o Damaged parts and protectors must be replaced or repaired by a specialized workshop.
 - o If the warnings printed on the machine are damaged or illegible, they must be replaced immediately.

Electrical safety

- The electrical connections must comply with the CEI 60245 (H 07 RN-F) standard, and the cable must have a section of at least: 400 V 3~ 5 x 1.5mm² for a maximum 10m cable.
- Never use the machine with a power cord longer than 10m, as they will cause a drop in voltage. The engine will not be able to be at full capacity and its operation will be affected.
- Plugs and extension cords must comply with current regulations. For example, made of rubber, plasticized PVC or another thermoplastic material with the same mechanical stability, or covered with this material.
- The connection joint of the extension must be waterproof.
- When extending the extension cord, make sure it does not twist, bend, or interfere with other tasks. Make sure it doesn't get wet.
- Unwind the cable completely if you are using a spool extension.
- Do not use the cable for purposes for which it was not designed. Protect the cable from heat, oil and any sharp objects. Do not pull on the cord to unplug the machine.
- Inspect extension cords frequently and replace if damaged.
- Do not use defective extension cords.
- When working outdoors, use only extension cords that are approved and marked as suitable for this type of work.
- Do not mount temporary electrical connections.
- Do not disable or bypass electrical safety measures.

Attention

The electrical connection and repairs to the electrical parts of the machine must be carried out by a certified electrician or at one of our service points. You must comply with local regulations, especially those referring to preventive measures.

Repairs to other parts of the machine must be carried out by the manufacturer or at one of our maintenance points.

Use only replacement parts approved by the manufacturer. The use of unsuitable parts may cause accidents. The manufacturer will not be held responsible for damage or injury caused by the use of inappropriate parts.

1.2. Scope of supply

After unpacking the product, check the contents of the box:

- Equipment previously assembled
- Right control stick
- Left control stick
- 2 wheels

- 1 axis
- 1 bag with accessories
- 1 instruction manual

Attention

Make sure it contains all the indicated material. Check that it has not been damaged in transport.

Immediately inform the distributor or supplier of any damage or missing parts, since claims filed with later dates will not be recognized.

1.3. Additional safety instructions

- The log splitter should be used by one person only.
- The machine must only be used by persons over the age of 18 who have read and understood the instructions.
- To protect yourself, use protections (shoes and mask or safety glasses, gloves, etc.).
- Never try to cut logs that contain spikes, wires, or other similar objects.
- Pre-cut logs and wood chips are dangerous in the work area; the operator can slip, trip or fall. Always keep the work area clear.
- Never put your hands on or near moving parts when the machine is on. Keep a safe distance from the log, ram, and wedge to avoid hand injuries.
- The machine must only be used to split logs with a maximum length of 1050mm
- Before starting to split logs, make sure the column has been lubricated to allow it to retract and extend smoothly.

1.4. Residual risks

Important

Even if it complies with the pertinent safety regulations of the product, there may be residual risks given the characteristics of the equipment and the work for which it has been designed.

Residual risks can be minimized by following the safety instructions, especially the sections "Safe work" and "Correct use".

- You will reduce the risk of personal injury and equipment damage by following these instructions and being careful.
- Failure to follow these safety instructions may result in injury to the operator or damage to property.
- Carelessness, misuse, or failure to follow safety regulations can cause injury to hands and fingers when the wedge is in motion.
- There is a risk of electrocution if you use non-approved electrical connections.
- Do not touch items connected to the electrical network.
- There is a risk of hearing loss when working with the machine without protections for long periods.

Note: Even if you take preventive measures, there may be residual, non-obvious risks.

1.5. Safety symbols



Read the operating and safety instructions carefully before you start using the machine.



Wear safety shoes to protect feet from falling logs.



Wear protective gloves to protect hands from splinters.



Wear ear protectors when working on the machine.



Wear a full-face mask when working with the machine to protect eyes from splinters.



Keep the work area clear. Clutter can cause accidents.



The presence of oil poses a fire hazard and may explode. Smoking is prohibited, as is any open flame.



Used oil must be managed at an oil collection point. Do not spill old oil on the ground or down the sewer or mix it with other waste.



Do not remove or modify any protection or security system.



Always keep an eye on the movement of the blade.



Risk of cutting or crushing! Never touch dangerous areas when the blade is moving.



Grasp the cutting levers when cutting.



Do not remove jammed logs by hand.



Always turn off the motor and unplug the machine before beginning any maintenance, repair or cleaning.



No person other than the operator should remain in the work area. Keep other people or animals out of the danger zone (minimum distance 5m).



Vent the hydraulic system before putting the machine into operation.

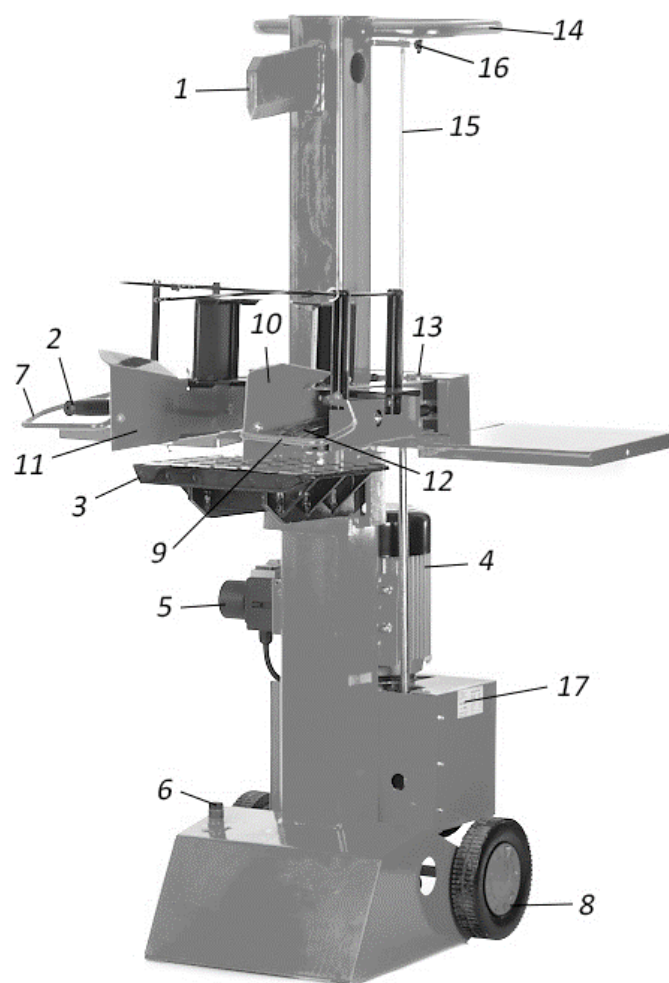


Make sure the motor rotates in the correct direction (see arrow). If the engine rotates in the opposite direction, it can damage the oil pump.

2. TECHNICAL SPECIFICATIONS

RLT8C	
Cutting force	80kN (8t)
Trunk size (max.)	1050mm
Trunk diameter (min. – max.)	120mm - 350mm
Wedge size	≈ 500mm
Feed rate	approx. 0.04m/s
Return speed	approx. 0.15m/s
Hydraulic oil (maximum)	5 liters
Hydraulic pressure	28MPa (280bar)
Electric motor performance (<i>energy consumption</i>)	P1 3.5kW S6 (4min/6min)
Electrical power supply	230V/3N ~+PE 50Hz, 16th
Dimensions (mm) [length x width x height]	770x540x550
Weight	113kg

3. PRODUCT DESCRIPTION



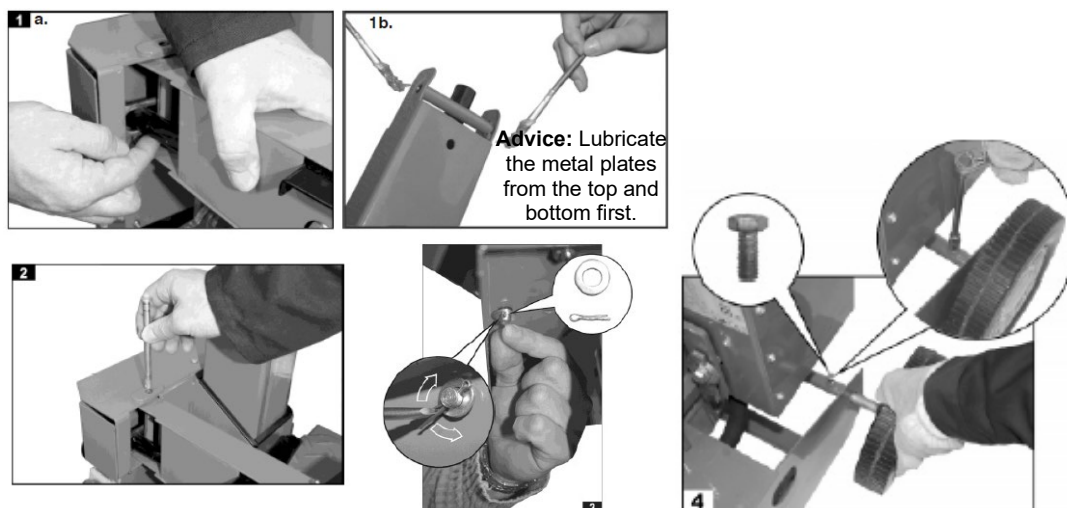
- | | |
|----------------------------------|--|
| 1. Chipping wedge. | 11. Left handle. |
| 2. Left control lever. | 12. Right control lever. |
| 3. Base table. | 13. Hinge bolt. |
| 4. Engine. | 14. Upper handlebar. |
| 5. Switch. | 15. Piston displacement adjustment connecting rod. |
| 6. Oil tank cover with dipstick. | 16. Tightening nut. |
| 7. Left control handle. | 17. Etiquette. |
| 8. Wheel. | |
| 9. Right control handle. | |
| 10. Right handhold. | |

Important note: For all operations related to the use and maintenance of the engine not described in this manual, consult the corresponding manuals.

4. ASSEMBLY AND OPERATION

4.1. Mounting

1. Mount the control levers. Position the levers and insert the cross-connect tubes.
2. Insert the hinge pin.
3. Lock the hinge in position with the latch at the bottom of the lever.
4. Mount the wheels.



4.2. Recommendations before use

⚠ Important

Do not use the machine near gas or fuel drums or pipes, or any other flammable material.

Make sure the work area meets the following requirements:

- There is no risk of slipping.
- The ground is level.
- There are no obstacles.
- There is enough light.

4.2.1. Correct use

- Use the log splitter for splitting logs only.
- The log splitter should only be used with straight logs.
- Before using the log splitter, remove any foreign objects such as nails, wire or concrete from the log.
- When using this product, the user agrees to comply with the instructions for use, maintenance and repair indicated by the manufacturer, and to follow the safety instructions included in this manual.
- The manufacturer does not authorize any use of this machine not indicated in the manual.

- Any modification of the product exempts the manufacturer from all responsibility for the damages that could be caused.
- Only persons who are familiar with and informed about the risks associated with the use of the product may prepare, use and carry out maintenance.

4.3. Start up

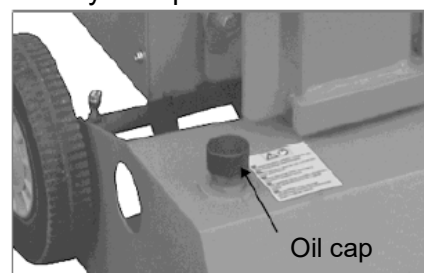
- Make sure the machine is correctly assembled.
- Before each use of the machine, make sure that:
 - o There are no faulty electrical connections (tears or cuts etc.).
 - o It does not use faulty electrical cables.
 - o The machine has not been damaged.
 - o All nuts are tight.
 - o There are no leaks from the hydraulic system.
 - o Check the oil level.

4.3.1. Ventilation


- Vent the hydraulic system before starting the log splitter.
- Unscrew the vent screw without removing it all the way to allow air to escape from the oil reservoir.
- Leave the ventilation hole open when using the machine.
- Close the vent screw before moving the machine as oil may escape.

⚠ Attention

If you do not vent the hydraulic system, trapped air will cause damage to the seals, resulting in permanent damage to the machine.



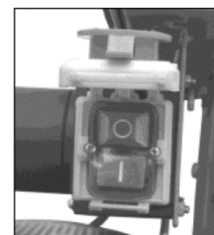
4.3.2. Connection to the electric grid

- Compare the voltage on the model plate of the machine (eg 230 V) with that of the mains; connect the machine only to suitable and well-grounded sockets.
- Only use extension cords with sufficient sections.
- Connect the machine through a 30mA safety switch.
- Fuse protection: 230 V 3~ 16 A 

4.3.3. Turn on and turn off

Before each use, check that the disconnect system works (turning the engine on and off).

Do not use any machine that cannot be turned on and off. Damaged switches must be immediately replaced or repaired by our maintenance technicians.



Light	Press the green button
To turn off	press the red button

Emergency shutdown (zero voltage)

The equipment will automatically shut down if there is a power outage. To turn on, press the green button again.

Use of the log splitter with 400 V 3~

Make sure the motor rotates in the correct direction (see arrow on motor). Running the engine in the opposite direction could cause damage to the oil pump.

- Start the engine; the cutting wedge will automatically move to the highest position.
- If the wedge is already in the highest position, grasp both control handles and push them down. The wedge will move down.
- If the wedge does not move after starting the motor, turn off the motor and change the direction of rotation.

To change the direction of rotation, use a screwdriver to turn the direction control screw located on the collar of the plug. Apply light pressure to move the screw.

Hydraulic system

- Never use the machine if there is a hydraulic fluid leak.
- Make sure that the machine and the work area are clean and free of traces of oil.
- Slip hazard.
- Inspect the reservoir frequently to make sure it has enough hydraulic oil.
- Capacity: approximately 4.5 liters.

4.4. Operating instructions

4.4.1. Trunk type

Logs that can be cut with this machine:

log size	
Max length	1050mm
Ø (min. – max.)	120 – 350mm

The diameter is a rough indication as you may have problems splitting thin logs if they contain knots or if the fibers are very strong.

Try not to split green logs. Dry logs are much easier to split and do not cause binding as often as green or damp wood.

Dry wood is conducive to bursting, exercise caution.

⚠ Attention

Never use the log splitter with two people. Never block the control handles (handles).

4.4.2. Operation with both hands:

1. Press the green button on the engine. Wait a few moments until the engine has reached the proper number of revolutions and sufficient pressure has built up in the hydraulic pump.

Check the direction of the three-phase motor (400V 3~) as using the machine with the motor in the opposite direction could damage the oil pump.



At temperatures below -5°C, let the machine run in neutral for at least 15 minutes to warm up the oil.

2. Put the log on the table.

Split logs only in the same direction as the wood grains.

3. Get a firm grip on the trunk using the levers.
4. Push both levers down simultaneously:
The cutting wedge will lower, splitting the trunk.
5. Release the control levers, and the wedge returns to its starting position.

If you release just one lever, the wedge will remain stationary.

4.5. Special instructions for cutting logs

4.5.1. Preparations

Logs to be cut must not exceed the maximum dimensions. Make sure logs have square, straight cuts.

Put the log on the table correctly, to ensure that the operator cannot trip or fall.

4.5.2. Wedge height adjustment

In the case of short pieces of wood, efficiency can be increased by shortening the return distance of the wedge.

1. Put the log on the table and push the levers down until the wedge is 2cm from the log (Fig.1).
2. Release a lever so that the wedge stays in position (Fig.2).
3. Turn off the machine and disconnect from the power supply
4. Release the second control lever.
5. Set the shim distance by tightening the adjusting nut on the side of the offset adjusting rod (Fig.3).



4.5.3. Cross wedge adjustment

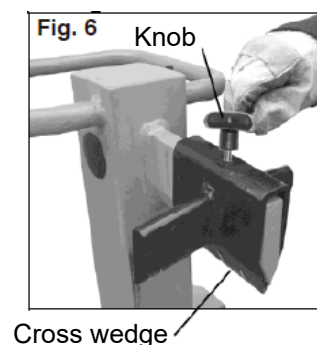
*(Optional accessory) (Fig. 6)

1. Loosen the star knob.
2. Move the cross wedge to the correct position (the knob is beyond the hole in the cutting wedge).
3. Tighten the knob.

4.5.4. Split short wood

1. Put the table in the highest position.
2. Put the wood on the table.
3. Grab the wood with the crowbars.

Split the wood only in the same direction as the grains.



4.5.5. Split long wood

1. Put the wood in the middle or high position.
2. Remove the cross wedge.
3. Put the wood on the table.

When splitting the logs, the wood may not split all the way, and when you return the wedge to its starting position, it will catch and lift with it.

In this case, do the following:

1. Turn off the machine.
2. Depending on the log to be cut, set the table in the intermediate or high position.
3. Start the motor and finish the cutting process. Never try to split two logs at the same time. Do not try to remove or change a log during the cutting process.



Note: Never try to split two logs at the same time. Also, do not try to remove or change a log during the cutting process.

⚠ Attention

Never try to force the log to cut by holding pressure for several seconds, as this may cause damage to the machine. Place the log back on the table and repeat the cutting process, or set it aside.

4.5.6. How to release a stuck log

With logs with knots, there is a risk of them getting caught during the cutting process.

1. Turn off the engine and disconnect from the mains.
2. Do not remove entangled logs by hand.
3. Move the hooked log carefully using a crowbar.



⚠ Attention

Never hammer the log, never use a saw to remove the log and never attempt to remove the log with other people; It is the work of one person.

4.5.7. Finish the job

- Lower the wedge to the lowest position.
- Release one of the control levers.
- Turn off the engine and disconnect from the mains.
- Follow care and maintenance instructions.

5. MAINTENANCE AND TRANSPORTATION

5.1. Maintenance



Before carrying out cleaning and maintenance tasks:

- Turn off the machine
- Unplug the equipment



Wear protective gloves to avoid hand injuries.

After carrying out the cleaning and maintenance tasks, the safety devices that have been disassembled must be repositioned correctly and the relevant functional tests must be carried out.

Use only parts approved by the manufacturer. The use of parts not approved by the manufacturer could cause damage or injury.

Make sure you have removed any tools from the machine after performing maintenance.

Other maintenance or repair tasks not described in this manual must be carried out by a qualified professional.

To ensure a long and reliable service life, you should carry out the following maintenance tasks frequently:

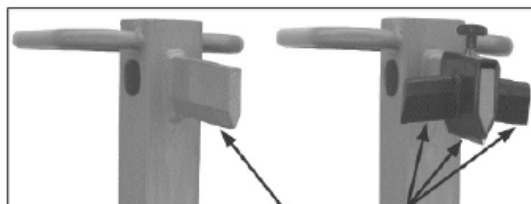
Observe the following instructions in the order in which they appear to keep the machine in good condition:

- Clean the machine carefully after using it.
- Loosen fasteners or grips.
- Check that there are no damaged or worn parts.
- Remove any remaining resin.

- Lubricate the piston column frequently or use an ecological spray oil.
- Regularly check that the connections are tight and that there are no leaks from the hydraulic tubes or connections.
- Correct any faulty assembly or placement of protective elements.

5.1.1. Cutting wedge sharpening

After long periods of use, the cutting performance may be affected, or small deformations in the cutting edge. Sharpen the wedge with a fine file to remove the filaments.



Sharpen the blades

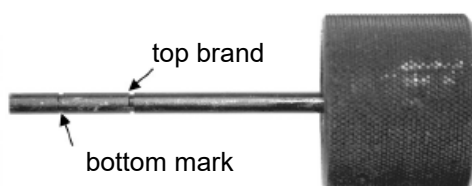
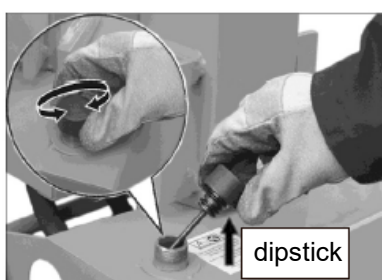
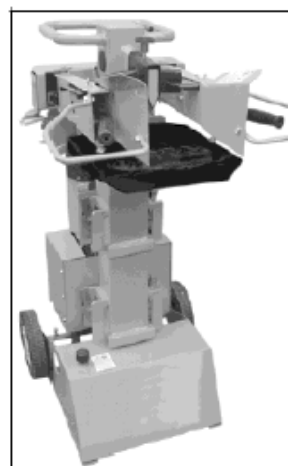
5.1.2. How to check the oil level

1. The wedge should be in the lowest position. Remove the oil dipstick.
2. Clean the oil tank dipstick and gasket.
3. Put the dipstick back in the reservoir.
4. Remove the dipstick and look at the level marked on it.

If the oil mark is between the two notches on the dipstick, there is enough oil in the reservoir.

If the oil mark is below the bottom notch, you should add more oil using a clean funnel.

5. Check that the oil tank gasket is not damaged; replace it if it is damaged.
6. Place the dipstick in the reservoir.



5.1.3. Oil change

When to change the oil

The first oil change should be done after 50 hours of use, and then every 500 hours of use. This process requires help.

Oil change:

1. The wedge and hydraulic column must be in the lowest position.
2. Remove the dipstick.
3. Place a container under the machine to collect the old oil. The container must have a capacity of at least 5 liters.
4. Unscrew the drain plug and let the oil drain out. (Fig.7)
5. Replace the drain plug.
6. Pour in the new hydraulic oil (approximately 2 litres) using a clean funnel.
7. Clean dipstick and reservoir gasket.
8. Check that the oil tank gasket is not damaged; replace it if it is damaged.
9. Place the dipstick in the reservoir.



⚠ Attention

Manage used oil responsibly, at an oil collection point. Never pour used oil into the ground or sewage system, or mix it with other waste.

5.1.4. Hydraulic oil:

- Shell Tellus T 22
- BP Energol HLP 22
- Aral Vitam Gf 22
- Mobile DTE 11
- Or the equivalent

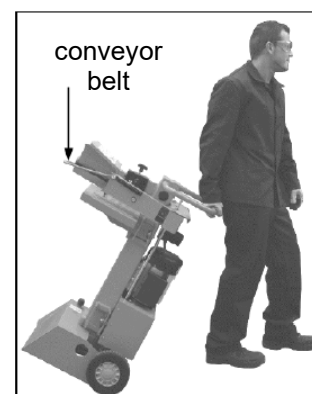
We recommend the above oils for the hydraulic cylinder. Do not use other types of oil. The use of other oils not mentioned here could have adverse effects on the operation of the hydraulic cylinder.

5.2. Transport

Drive the wedge all the way in before moving the equipment.

To transport it, grasp the handle and tilt the machine slightly towards you. The log splitter can easily be moved in this position.

Make sure the oil tank cap is closed tightly to prevent spillage during transport.



6. PROBLEM SOLVING

⚠ Caveat

Do not perform any maintenance action with the engine running. Turn off the machine and unplug the equipment.

Problem	possible cause	Solution
The logs are not cut well (insufficient cutting performance)	The trunk is not well positioned	Position the trunk well
	The log exceeds the maximum dimensions or the wood is too hard for the machine	Cut the log to the correct dimensions
	The wedge does not split the trunk	Sharpen the cutting wedge and check for filaments or nicks
	Hydraulic pressure is too low	Check the oil level and add more if necessary. If the problem persists, take the machine to an authorized maintenance center.
	Damaged drop rods (hydraulic rod not seated correctly)	Take the machine to the manufacturer or authorized company to adjust the rods.
	The power cable is incorrect (longer than 10m or with a section that is too small)	Use the correct extension cord. If the problem persists, take the machine to an authorized maintenance center.
The column moves unstable or with strong vibrations.	There is air in the circuit	Check the oil level and add more if necessary.
	The spine is not sufficiently lubricated	Lubricate the column with an environmentally friendly lubricant or spray oil. If the problem persists, take the machine to an authorized maintenance center.
column does not scroll	The hydraulic pump is faulty	To correct the problem, contact the manufacturer or another authorized service center
The motor starts but the column does not move	The motor is turning in the opposite direction.	Check the direction of the motor and adjust it.
The motor does not start	there is no electric current	check the fuse
	The three-phase motor is in two-phase mode.	Have a qualified electrician check the fuse and wire
	The connection cable is defective	Replace the connection cable or see a specialist to check its operation
	The electric motor is faulty	To correct the problem, contact the manufacturer or another authorized service center

Note: If you have any questions or problems persist after performing the above operations, contact your dealer or service center.

7. WARRANTY

Millasur guarantees that if your product suffers from a manufacturing defect during the established guarantee period, contact or go to your point of sale.

Your purchase invoice must be kept as proof of the purchase date. Your tool must be returned to your dealer in an acceptable and clean condition, in its original molded case, if applicable to the unit, accompanied by your appropriate proof of purchase.

7.1. Warranty period

The legal warranty period for the product begins on the original date of purchase by the first initial buyer and its duration will be that established by the Royal Decree-Law for the protection of consumers and users in situations of social and economic vulnerability for the year. corresponding to the time of purchase of the product.

Some countries do not allow limitations on how long an implied warranty lasts or do not allow the exclusion or limitation of consequential or incidental damages, in which case the above limitation and exclusion may not apply to you. This warranty gives you specific legal rights, and you may also have other rights which vary from state to state or country to country.

7.2. Exclusions

This warranty does not cover product damage or performance problems caused by:

- Natural wear and tear from use.
- Misuse, neglect, careless operation or lack of maintenance.
- Defects caused by incorrect use, damage caused by manipulations carried out by personnel not authorized by Anova or use of non-original spare parts.
- Defects of normal wear parts, such as bearings, brushes, cables, plugs or accessories such as drills, bits, saw blades, etc.
- Damage or defects resulting from abuse, accidents or alterations.
- Incorrect use and storage (explicit reference that the rules described in the operating instructions have not been followed).
- Customer wear (for example, broken saw blades, worn carbon brushes, etc.).
- Secondary wear and damage due to lack of maintenance, repair, lubricants (for example, damage from overheating due to blocked cooling slots, bearing damage as a result of dirt, frost damage, etc.)
- Damage as an obvious result of overuse/overloading.
- Damage caused by inappropriate supplies (e.g. wrong fuel)
- Load-induced failure of housing components or accessories due to abnormal stress
- Load-induced deformation of housing components or accessories due to abnormal stress.
- Damage resulting from the operation of supplies that are overfilled or leaking due to improper storage, in proper cleaning agents or other damaging chemicals.
- Damage due to improper exposure to extreme temperatures (for example, freeze fractures, thermal distortion of components, etc.)
- Damage from permanent exposure to ultraviolet radiation.
- Damage caused by improper maintenance.
- Any damage caused by non-compliance with the instruction manual
- Any product that has been attempted to be repaired by an unqualified professional.
- Any product connected to an inadequate power source (amps, voltage, frequency).
- Any damage caused by external influences (water, chemicals, physics, shock) or foreign substances.
- Use of inappropriate accessories or parts.
- It does not include defects of normal wear parts, nor does it cover damages or defects resulting from abuse, accidents or alterations, nor transportation costs.

Also, the warranty is void if the product has been altered or modified, or if the trademark/serial number on the machine has been defaced or removed.

Routine maintenance, tune-ups, adjustments or normal wear and tear are not covered under this warranty.

This manual does not cover all possible situations regarding warranty exclusions, for more information contact your nearest Anova dealer.

7.3. In case of incident

The guarantee must be correctly completed with all the information requested, and accompanied by the purchase invoice.

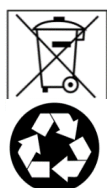
Anova reserves the right to deny any claim where purchase cannot be verified or where it is clear that the product was not maintained properly (maintenance, vents cleaned, lubrication, carbon brushes regularly maintained, cleaning, storage, etc.).

Private use is understood as personal domestic use by a final consumer. Instead, commercial use means all other uses, including uses for commercial, income-generating, or rental purposes. Once the product has been used for commercial use, it will hereafter be considered a commercial use product for the purposes of this warranty.

These are our standard warranty terms, but occasionally there may be additional warranty coverage not determined at the time of publication. For more information, contact your nearest official Anova distributor or by visiting www.millasur.com.

Warranty service is only available through official Anova dealers. You can locate your nearest distributor on our distributor map at www.anova.es.

8. ENVIRONMENT



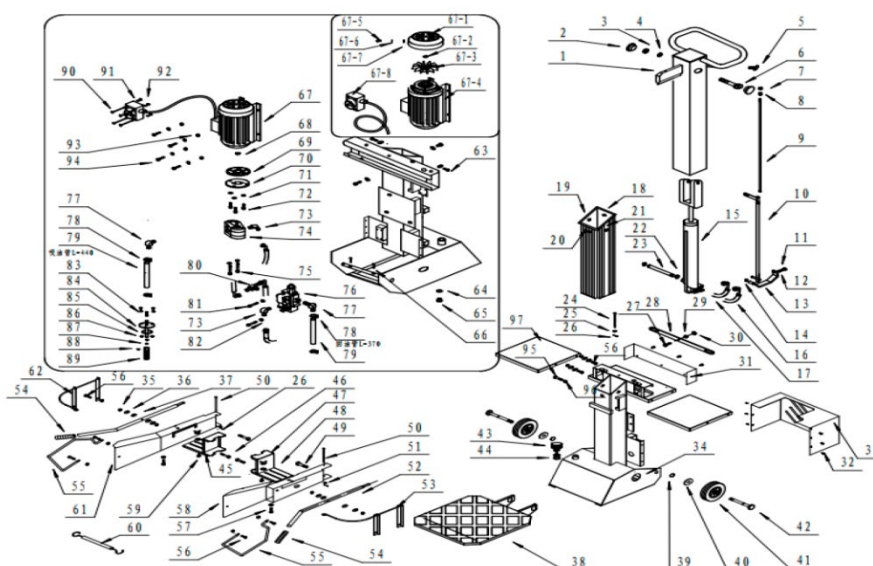
Protect the environment. Recycle the oil used by this machine by taking it to a recycling center. Do not pour used oil into drains, land, rivers, lakes or seas.

Dispose of your machine in an ecological way. We must not dispose of the machines together with the household waste. Its plastic and metal components can be classified according to their nature and can be recycled.

The materials used to pack this machine are recyclable. Please do not dispose of the packaging in the household waste. Dispose of these packages at an official waste collection point.

9. EXPLODED

RLT8C



10. CE CERTIFICATE

DISTRIBUTION COMPANY

MILLASUR, SL

RUA EDUARDO PONDAL, Nº 23 PISIGÜEIRO

15688 OROSO - A CORUÑA

SPAIN



EC DECLARATION OF CONFORMITY

In compliance with the different CE directives, this document confirms that, due to its design and construction, and according to the CE mark printed on it by the manufacturer, the machine identified in this document complies with the pertinent and fundamental health and safety requirements. of the aforementioned EC directives. This declaration validates the product to display the CE symbol.

In the event that the machine is modified and this modification is not approved by the manufacturer and communicated to the distributor, this declaration will lose its value and validity.

Machine name: **WOOD CHIPPER**

Model: **RLT8C**

Recognized and approved standard to which it conforms:

Directive 2006/42/EC
2014/30/EU

Tested according to regulations:

IN60204-1:2006+A1:2009+AC:2010
IN 609-1:2017

Company seal

MILLASUR, S.L.U.

Rúa Eduardo Pondal,23 - Pol.EMP..Sigüeiro

15688-Oroso-A Coruña

Tel.(+34) 981 69 64 65 - Fax (+34) 981 69 08 61

e-mail: millasur@millasur.com

CIF: B-15 749 922

08/20/2018