

Wood breaker

RLT35GVH

ANOVA

Instructions and user manual



EN

Millasur SLU
Rúa Eduardo Pondal, nº 23 - Pol. Ind. Sigüeiro
15688 - Oroso - A Coruña - 981 696 465 - www.millasur.com





Anova would like to congratulate you for choosing one of our products and guarantee you the assistance and cooperation that has always distinguished our brand over time.

This machine is designed to last for many years and to be of great use if used in accordance with the instructions contained in the user manual. We therefore recommend that you read this instruction manual carefully and follow all our recommendations.

For more information or questions you can contact us through our web supports such as www.anova.es

INFORMATION ABOUT THIS MANUAL

Please pay attention to the information provided in this manual and on the appliance for your safety and the safety of others.

- This manual contains instructions for use and maintenance.
- Take this manual with you when working with the machine.
- Contents correct at time of printing.
- We reserve the right to make changes at any time without affecting our legal responsibilities.
- This manual is considered an integral part of the product and must remain with it in case of loan or resale.
- Ask your dealer for a new manual if it is lost or damaged.

READ THIS MANUAL CAREFULLY BEFORE USING THE MACHINE



To ensure your machine provides the best results, please read the usage and safety instructions carefully before using it.

OTHER WARNINGS:

Incorrect use may cause damage to the machine or other objects.

Adaptation of the machine to new technical requirements may cause differences between the content of this manual and the purchased product.

Read and follow all instructions in this manual. Failure to follow these instructions could result in serious personal injury.

INDEX

1. SAFETY INSTRUCTIONS
2. PRODUCT DESCRIPTION
3. TECHNICAL SPECIFICATIONS
4. INSTALLATION AND OPERATION
5. MAINTENANCE
6. TROUBLESHOOTING
7. WARRANTY
8. ENVIRONMENT
9. EXPLODED VIEW
10. CE CERTIFICATE

1. SAFETY INSTRUCTIONS

1.1. Instructions for safe work

Important

Before operating this product, please read and follow the instructions below. To prevent injury to yourself and others, you should also follow the preventive regulations in your area and the safety regulations in force in your country.

Make sure that everyone who works with the equipment reads the safety instructions. Keep the instructions with your product and in a safe place for future reference.

- Stay alert at all times, do not use the equipment if you are tired or under the influence of substances that affect your concentration. A moment of distraction is enough to cause serious injury.
- Familiarize yourself with the equipment before using it. Read and understand all operating instructions.
- Do not use the equipment for inappropriate work.
- Make sure you maintain a safe and balanced stance at all times.
- Stay close to the control and safety controls.
- When working with the machine, always wear:
 - o Safety glasses or a full-face mask.
 - o Safety gloves.
 - o Hearing protection.
 - o Safety footwear with steel toe.

Do not wear loose clothing or jewelry of any kind as they may get caught or caught.

- The operator is responsible for third parties within his work area.
- The use of this machine by children or unqualified persons is prohibited.
- Keep children and pets away from the work area.
- Do not use the machine if there are people nearby.
- Never leave the machine unattended.
- Keep the work area clear. Clutter can cause accidents.
- Do not overload the machine. The job will be done better and safer within the established parameters.
- Only use the machine with the correct and properly fitted safety accessories. Do not alter any part of the machine that could affect safety. Do not modify any part of the machine.
- Do not leave or use the machine in the rain.
- When not in use, store the machine in a dry, safe place, out of the reach of children.
- Turn off the engine in the following cases:
 - o When performing repair work.
 - o When performing maintenance or cleaning tasks.
 - o When connecting electrical cables.
 - o When inspecting the machine for faults.
 - o When transporting the machine.
 - o If the machine is to be left unattended, even for short interruptions.
- Inspect the machine for possible faults.
- You must inspect the safety systems to ensure that they are working properly before you start using the machine.

- Check that all moving parts are in good condition, that they work properly and that there are no jams. All parts must be correctly installed and comply with all standards to ensure proper operation of the machine.
- Damaged parts and protectors must be replaced or repaired by a specialized workshop.
- If the warnings printed on the machine are damaged or illegible, it must be replaced immediately.

1.2. Additional safety instructions

- The log splitter must be used by one person only.
- The machine must only be used by qualified persons who have read and understood the instructions.
- For safety, use protective equipment (footwear and mask or safety glasses, gloves, etc.).
- Never attempt to cut logs that contain spikes, wires or other similar objects.
- Previously cut logs and wood chips are dangerous in the work area; the operator can slip, trip or fall. Always keep the work area clear.
- Never put your hands on or near moving parts when the machine is on. Keep a safe distance from the log, push blade and wedge to avoid serious injury.
- Before you start splitting logs, make sure the cutting wedge has been lubricated to allow for smooth operation.

1.3. Residual risks

Important

Even if the equipment complies with the relevant product safety regulations, there may be residual risks given the characteristics of the equipment and the work for which it has been designed.

Residual risks can be minimized by following the safety instructions.

- Following these instructions and being careful will reduce the risk of personal injury and equipment damage.
- Failure to follow these safety instructions may result in injury to the operator or property damage.
- Lack of care, incorrect use or failure to follow safety rules can result in injury to hands and fingers when the wedge is in motion.
- There is a risk of hearing loss when working with the machine without protection for long periods.

Note: Even if you take preventive measures, there may be residual risks that are not obvious.

1.4. Safety symbols



The engine is shipped without oil.
Before starting the engine, fill it with correct engine oil.
Refer to your engine manual for more information.

The hydraulic oil tank is shipped without oil.
When adding oil, check that the oil level is correct from the top of the hydraulic system reservoir (not including the filler neck).
Closely inspect all components of the product.



Read this manual. Serious injury may occur if safety instructions are not followed.

Everyone who uses this product must read and fully understand all safety rules, operating instructions and maintenance instructions.
Keep people not trained to use this machine away.



This is the safety alert symbol. It is used to alert you to potential personal injury hazards. Obey all safety messages that follow this symbol to avoid possible serious or fatal injury.



Crushing Hazard. The wedge can cut skin and break bones. Keep both hands away from the wedge and other hazardous components.

Serious accidents can occur when other people are allowed into the work area. Keep all others out of the work area while operating the machine.
Do not wear loose clothing. You may become entangled in the moving parts of the product.

Use the product only in daylight so that you can see while working.



Flying objects.

Pieces of log may fly out during splitting. Wear safety glasses. Serious eye injuries may occur.



Danger of injection into the skin.

- Make sure all fittings are tight before applying pressure. Relieve system pressure before performing maintenance.
- Do not check for leaks with your hand. Instead, use a piece of cardboard to check for leaks.
- If skin injection occurs, seek medical attention immediately.

Risk of fire and explosion

Hot engine exhaust gases can cause a fire. Gasoline is highly flammable and explosive. You can be burned or seriously injured when handling fuel.

- Place the exhaust at least 7 feet from combustible objects.
- Before adding fuel, stop the engine and keep away from heat, sparks and flames.



Do not add fuel when the engine is running or still hot. Do not smoke near the engine.

- Use an approved fuel container to transport fuel. Clean up fuel spills immediately.



- Store and handle fuel outdoors only. Gasoline vapors may ignite if allowed to accumulate indoors. An explosion may occur.

- Do not change or add to the exhaust system. Fire may occur.

- Do not change or add fuel tanks or fuel lines. Fire may result.

- Before each use, check the fuel tank and fuel system lines for leaks. Any fuel leak is a fire hazard. Repair any fuel leak before starting the engine.

- During transportation, take precautions to ensure that the machine does not tip over and cause a fire hazard due to fuel leakage.



Respiratory hazard.

Engine fumes are toxic and harmful. Do not use the product indoors even if it is ventilated. For outdoor use only.

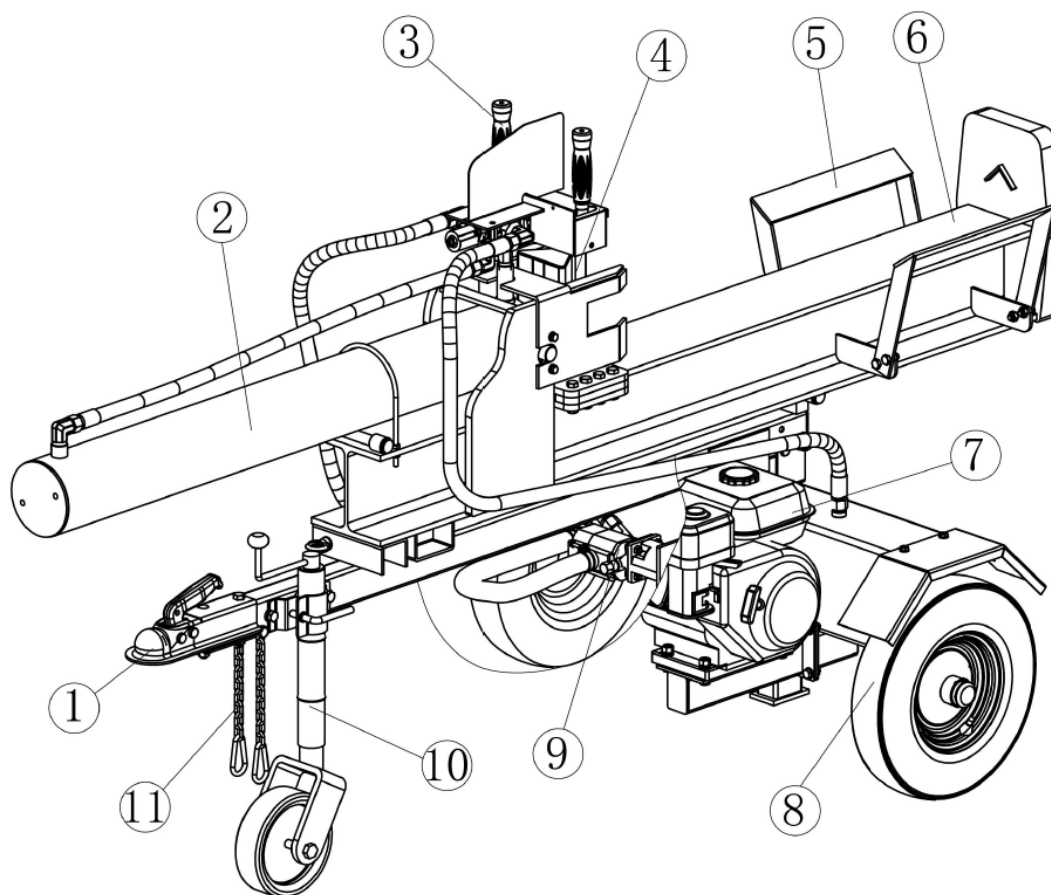


Hot exhaust. You can burn yourself on it. Do not touch.

Note: Keep these instructions and always carry them with the machine. It is important to follow all safety measures to minimize risks.

2. PRODUCT DESCRIPTION

2.1. Machine parts



1	Tow bar	Connects the machine to your vehicle. Only fits 50mm tow balls.
2	Hydraulic cylinder	
3	Control valve handle	Use the control valve handle to move the sliding wedge back and forth.
4	Cradle	The wedge has a conical shape that facilitates division.
5	Log holder	Maintains the trunk on the beam without assistance from the operator.
6	Support beam/bracket	
7	Engine	The air-cooled engine drives the hydraulic pump.
8	Tires	The maximum rated speed is 15 km/h. It cannot be towed on public roads.
9	Gear pump	The gear pump causes hydraulic oil to flow through the system.
10	Trailer wheel	This wheel supports the product while it is in operation. It is easier to move the log splitter when it is being towed.
11	Safety chains	A safety feature to prevent product loss during towing.

3. TECHNICAL SPECIFICATIONS

Characteristics	
Engine	Ducar - 4 stroke
Power	9 HP – 5.4 kW
Displacement	270cc
Recommended engine oil type	SAE30
Power working pressure (max.)	35 Tn – 3500psi
Maximum flow rate	15.2 gpm
Hydraulic oil capacity	20L
Recommended hydraulic oil type	10wt AW32, ASLE / H-150 / ISO32
Maximum towing speed	30 MPH – 48km/h
Maximum cutting length	105cm
Ø Inner of hydraulic cylinder	12.7cm
Maximum cutting diameter	50cm
Gross weight	310 kg

Note: Due to design improvements and/or changes in specifications, this manual may be modified without prior notice and without the need to change the document.

4. INSTALLATION AND OPERATION

4.1. Unpacked

After unpacking the product, check the contents of the box:

- Place the shipping box on a solid, flat surface.
- Carefully cut the shipping bands and remove the lid from the shipping box.
- Using two people to lift, carefully remove the engine, oil tank, wheels, tow bar, support legs and hardware.
- Verify that all breaker parts and accessories are in the box before beginning assembly.

Attention

Make sure that it contains all the indicated material. Check that it has not been damaged in transit.

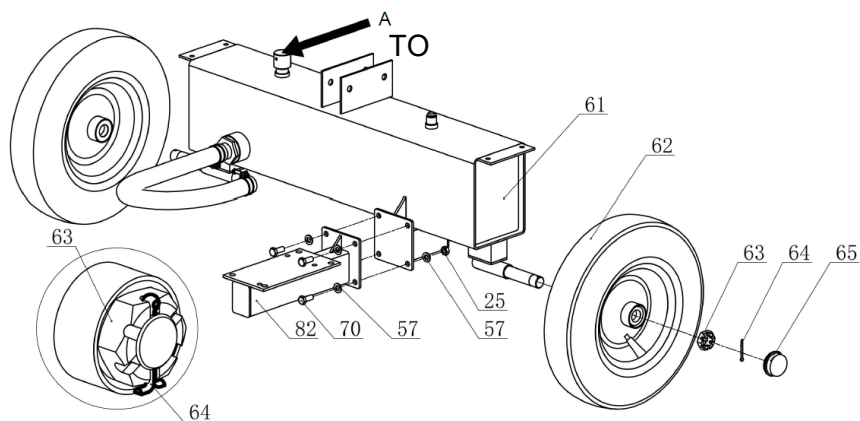
Please inform the dealer or supplier immediately of any damage or missing parts, as claims submitted after this date will not be recognised.

4.2. Mounting

4.2.1. Wheel assembly

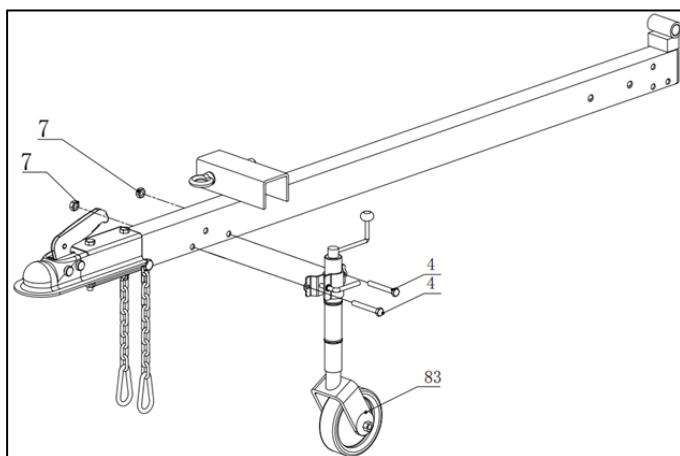
Attach the wheel (62) to the oil tank axle (61) using a M24x2 slotted nut (63), a Ø4x36 cotter pin (64) and attach the wheel cover (65).

Attach the engine bracket (82) to the oil tank by the M10x25 bolt (70), washer (57) and nut (25)



A. Hydraulic oil

4.2.2. Installing the tow bar and wheel support bracket

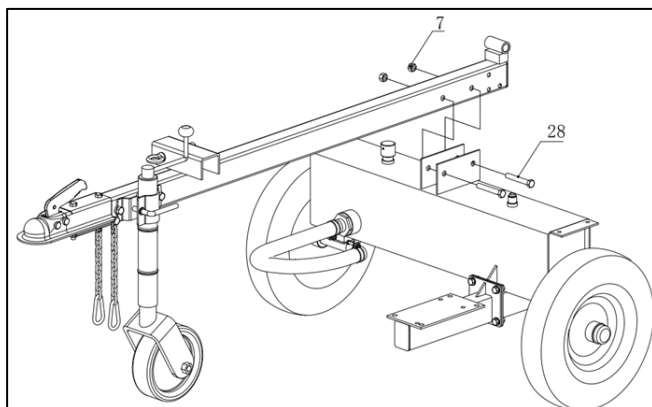


Attach the jockey wheel (83) to the tow bar using:

- M12x75 bolts (4)
- M12 Locknuts (7)

Note: The trailer hitch supplied is European style.

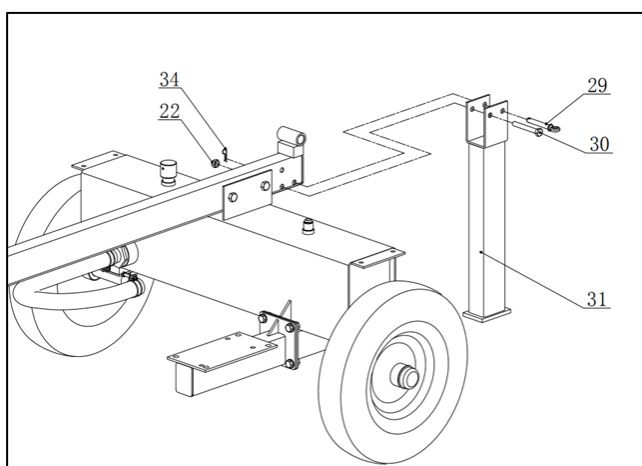
4.2.3. Attach the tow bar to the oil tank



Attach the tow bar to the oil tank using:

- M12 x80 bolts (28)
- M12 lock nut (7).

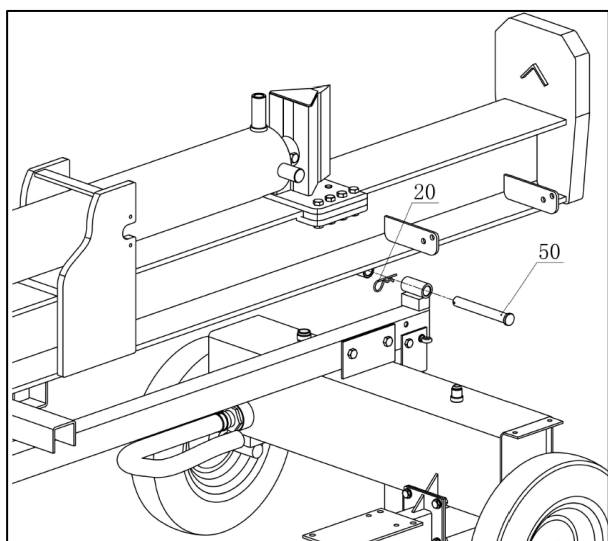
4.2.4. Mount the rear support



Attach the bracket (31) to the tow bar using:

- A pin (29)
- A M10X75 bolt (30)
- An M10 lock nut (22)
- A pin R (34)

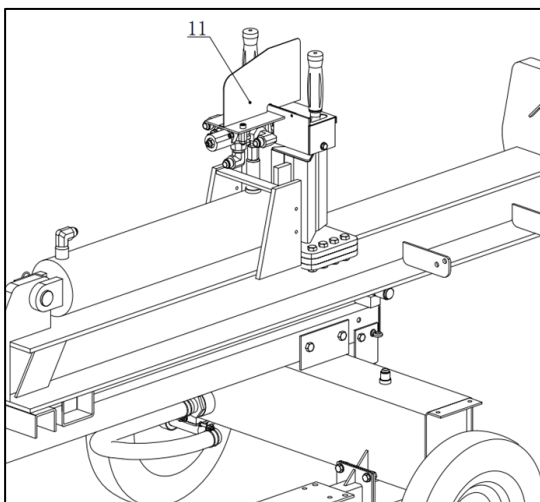
4.2.5. Connect the hydraulic cylinder



Mount the main body of the breaker to the structure using:

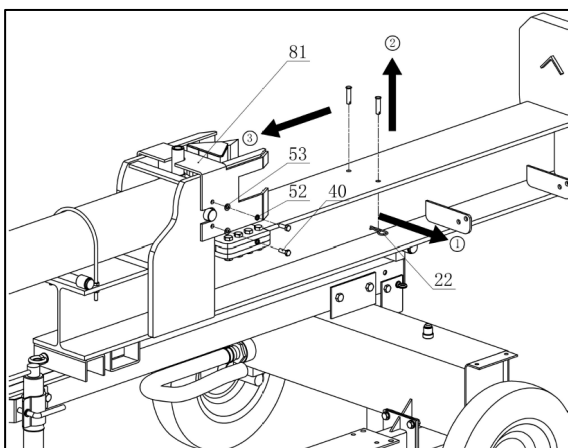
- A beam pin (50)
- Fix it with pin R $\phi 3 \times 73$ (20)

4.2.6. Connect the control valve



Connect the control valve assembly (11) to the oil cylinder as shown.

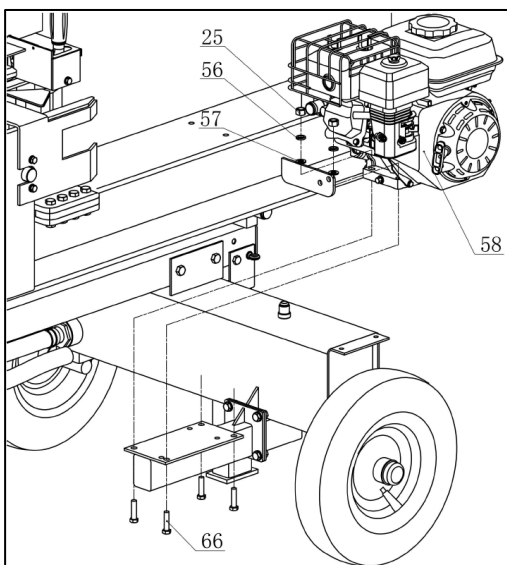
4.2.7. Protective wedge assembly



Mount the wedge guard (81) to the beam using:

- M8X25 Bolt (40)
- Spring loaded gasket Ø8 (52)
- Flat washer Ø8 (53).

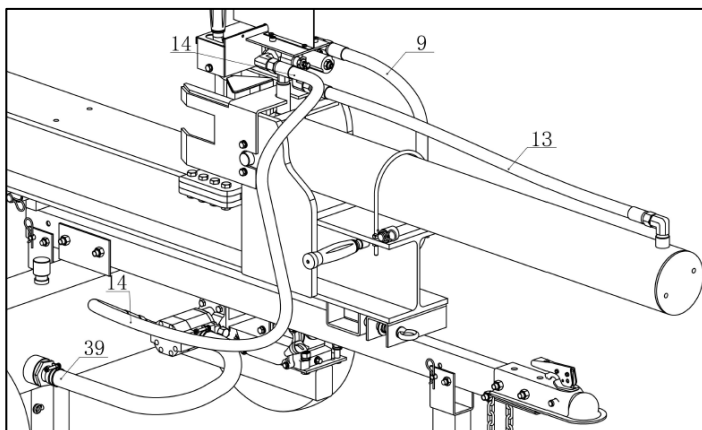
4.2.8. Connect the engine



Mount the engine to the engine bracket using:

- The M10x40 bolt (66)
- Flat washer Ø10 (57)
- Spring washer Ø10 (56)
- M10 lock nut (25)

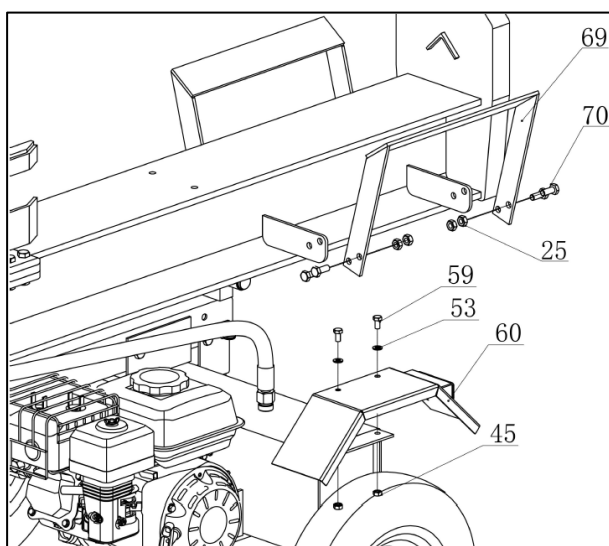
4.2.9. Connect the hydraulic oil pipes



Connect all tubes to the machine as follows, including:

- Oil pipe A (14)
- Oil pipe B (13)
- Oil pipe C (9)
- The suction tube (39)

4.2.10. Attach the wheel guard and trunk guide plate

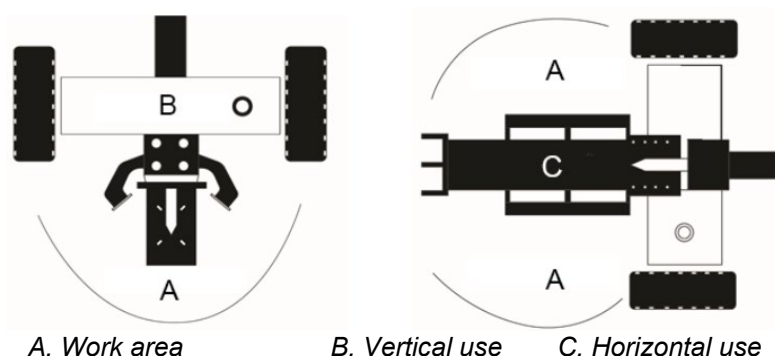


1. Attach the left wheel guard and right wheel guard (60) to the beam using:
 - The M8x16 bolt (59)
 - Flat washer Ø8 (53)
 - M8 lock nut (45)
2. Attach the left and right log guide plate (69) using:
 - The M10X25 bolt (70)
 - M10 lock nut (25)

4.3. Start-up

Add hydraulic oil to the breaker, fill the engine with gasoline and engine oil.

1. Load a log onto the beam and against the support bracket.
2. Serious accidents can occur when other people are allowed into the work area. Keep all others out of the work area while operating the machine.
3. Make sure your hands are away from crush hazard areas.
4. Push the control valve handle/bar forward with both hands to split the log.
5. Push the control valve handle/bar back with both hands to return the wedge to its original position.
6. Remove split wood from the work area.



Warning



Read the entire owner's manual. Serious injury or death can occur if safety instructions are not followed.

Make sure the operation is performed in a well-ventilated area.

Blade Hazard. Keep hands away from blade. Serious injury may occur. Blade can cause serious injury.

Wear eye and ear protection while cutting.

The machine must be positioned so that it is stable and secure against slipping. Leave enough space around your machine so that you can use it safely.

1. Make sure that no unauthorized persons (especially children) can approach your work area.
2. Before starting the machine, all guards and safety devices must be correctly fitted. Check that all screws, bolts, hydraulic couplings and clamps are properly tightened. Always ensure that the hydraulic oil level is sufficient before each start-up.
3. This machine must never be used when it is in poor condition or in need of maintenance. Before using this product, familiarize yourself with its controls, safety features and operation.

4.3.1. Size of the trunks

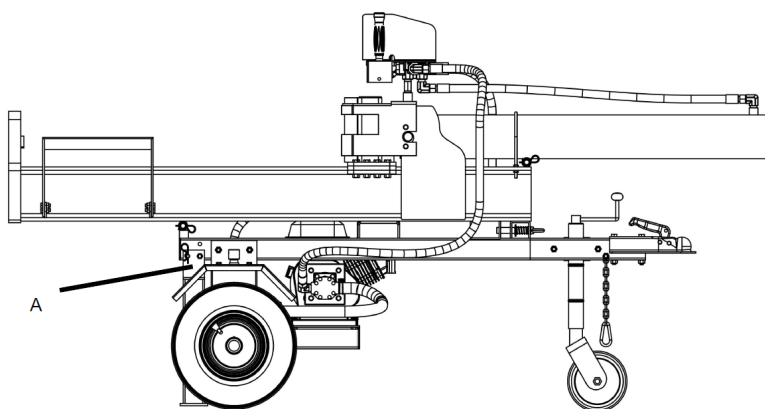
1. Choose your work site with your safety standards in mind. Have the logs you are splitting on hand. Remove split logs from the work area.
2. Before splitting logs, separate those that do not meet the specifications in this manual, both in terms of maximum permitted length and maximum width. Using the product with logs that do not meet these specifications will increase the likelihood of serious injury to property and personal property.
3. Always choose the appropriate height for the respective trunk length. Always use the locking device to secure the table in the desired position.
4. Do not operate this log splitter under full load for more than 5 seconds.

Important

Never try to split fresh wood. Dry wood is much easier to split than fresh, wet logs. Plus, it doesn't tend to jam as much during cutting.

4.4. Operating instructions

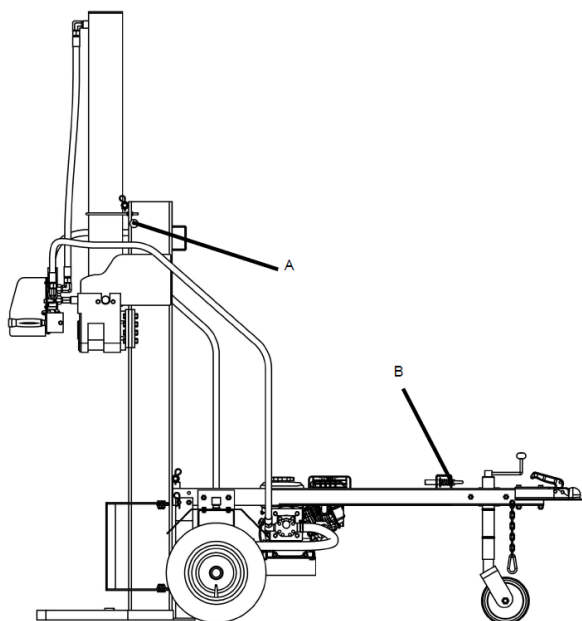
4.4.1. For horizontal use



A

Rotate the rear leg down and slide the locking pin.

4.4.2. For vertical use



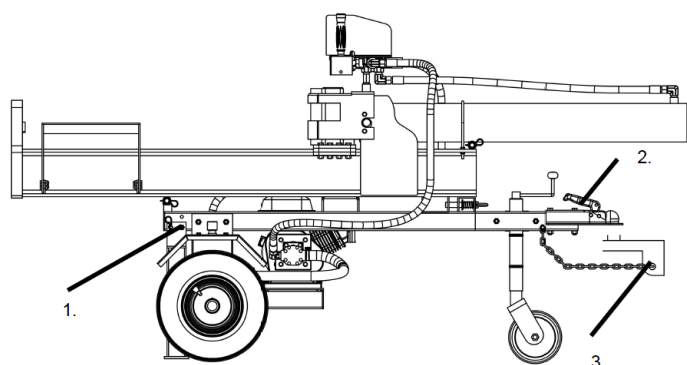
1. Remove the beam locking pin.

2. Lift the beam by the end and swing it down slowly using the movable handle.

A → Movable handle on the beam.

B → Beam locking pin.

4.4.3. For horizontal towing

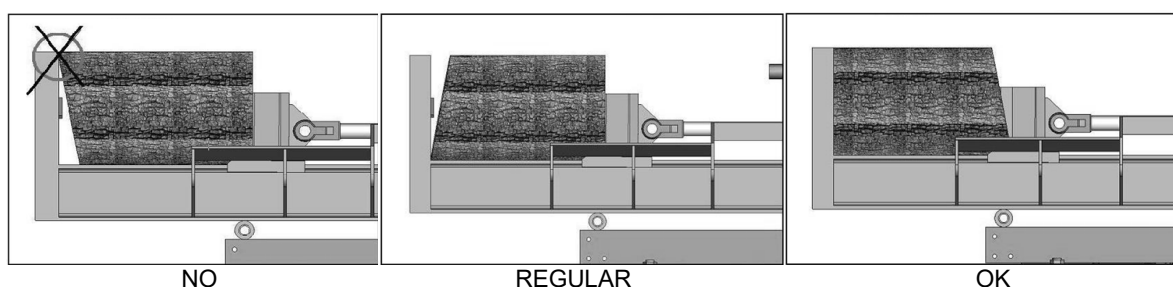


1. Rotate the rear leg up and slide the locking pin.

2. Press the handle down and secure it firmly.

3. Attach the safety chain to the towing vehicle.

4.4.4. How to split a log with an inclined surface



5. MAINTENANCE

5.1. Maintenance

Before performing cleaning and maintenance tasks, the log splitter must be placed in maintenance mode.

- Turn off the engine.
- Move the control valve handle back and forth to relieve hydraulic pressure.
- Use protective gloves to avoid hand injuries.

After performing maintenance, make sure all guards, shields and safety features are in place. Failure to follow this warning may result in serious injury.

Important note: For all operations relating to the use and maintenance of the engine not described in this manual, refer to the corresponding manuals.

Basic checks and maintenance after each use:

That	When	As
Hoses	Each use	Inspect for exposed wire mesh and leaks. Replace all worn or damaged hoses before starting the engine.
Hydraulic accessories	Each use	Inspect for cracks and leaks. Replace all damaged accessories before starting the engine.
Nuts and bolts	Each use	Check for loose bolts
Beam	Each use	Apply grease to the surface of the beam
Moving parts	Each use	Clearing debris

After carrying out cleaning and maintenance tasks, any safety devices that have been removed must be correctly refitted and the relevant operational tests must be carried out.

Use only manufacturer-approved parts. Use of non-manufacturer-approved parts may cause damage or injury. Make sure that all tools are removed from the machine after performing maintenance tasks.

Other maintenance or repair tasks not described in this manual must be carried out by a qualified professional. Refer to the engine owner's manual for engine maintenance.

Please follow the instructions below in the order in which they appear to keep the machine in good condition:

- Clean the machine carefully after use.
- Loosen any fasteners or grips.
- Check for damaged or worn parts.
- Remove any remaining resin.
- Lubricate the piston column regularly and properly. Contact your official distributor if you have any questions.
- Regularly check that the connections are properly connected and that there are no leaks from the hydraulic pipes or connections.
- Correct any faulty mounting or placement of protective elements.

6. TROUBLESHOOTING

Warning

Do not perform any maintenance actions with the engine running. Turn off the machine and unplug the equipment.

Problem	
The cylinder rod does not move	SOLUTION: A, D, E, H, J
Slow speed of cylinder shaft when extending or retracting	SOLUTION: A, B, C, H, I, K, L
The wood does not split or splits very slowly.	SOLUTION: A, B, C, F, I, K
The motor stalls when cutting	SOLUTION: G, L
Engine stalls under low load conditions	SOLUTION: D, E, L, M

Possible cause	Solution
A- Insufficient oil to pump	Check the oil level in the oil tank
B- Air in oil	Check the oil level in the oil tank
C- Excessive vacuum at pump inlet	Check the pump inlet hose for obstructions or kinks.
D- Blocked hydraulic lines	Flush and clean the splitter hydraulic system.
E- Control valve blocked	Flush and clean the splitter hydraulic system.
F- Low control valve setting	Adjust the control valve with a pressure gauge.
G- High control valve adjustment	Adjust the control valve with a pressure gauge.
H- Damaged control valve	Please contact your official dealer.
I- Internal control valve leak	Please contact your official dealer.
J- Internal cylinder leak	Please contact your official dealer.
K- Internally damaged cylinder	Please contact your official dealer.
L- Engine control out of adjustment	Adjust the idle control nuts.
M- Engine loads during idle mode	Use a shorter length log (20" or less) to allow the engine to accelerate before contact.

Note: If you have any questions or problems persist after performing the above operations, please contact your official distributor.

7. WARRANTY

If your product suffers from a manufacturing defect during the established warranty period, please contact or go to your point of sale directly with the necessary documentation.

Your purchase invoice should be retained as proof of the date of purchase. Your tool must be returned to your dealer in an acceptable, clean condition, in its original molded box, if applicable to the unit, accompanied by your appropriate proof of purchase.

7.1. Warranty period

The legal warranty period for the product begins on the original date of purchase by the first initial buyer and its duration will be that established by the Royal Decree-Law on the protection of consumers and users against situations of social and economic vulnerability of the year corresponding to the time of acquisition of the product.

Some countries do not allow limitations on how long an implied warranty lasts or do not allow the exclusion or limitation of consequential or incidental damages, so the above limitation and exclusion may not apply to you. This warranty gives you specific legal rights, and you may also have other rights which vary from state to state or country to country.

7.2. Exclusions

This warranty does not cover product damage or performance problems caused by:

- Natural wear and tear.
- Misuse, neglect, careless operation or lack of maintenance.
- Defects caused by incorrect use, damage caused by manipulations carried out by personnel not authorised by Anova or use of non-original spare parts.
- Defects in normal wear parts such as bearings, brushes, cables, plugs or accessories such as drills, bits, saw blades, etc.
- Damage or defects resulting from abuse, accidents or alterations.
- Incorrect use and storage (explicit reference that the rules described in the operating instructions have not been complied with).
- Customer-caused wear (e.g. broken saw blades, worn carbon brushes, etc.).
- Wear and secondary damage due to lack of maintenance, repair, lubricants (e.g. overheating damage due to blocked cooling slots, bearing damage as a result of dirt, frost damage, etc.)
- Damage as an obvious result of overuse/overloading.
- Damage caused by inappropriate supplies (e.g. incorrect fuel)
- Load-induced breakage of housing components or accessories due to abnormal stress
- Load-induced deformation of housing components or accessories due to abnormal stress.
- Damage resulting from the operation of supplies that are overfilled or leak due to improper storage, inappropriate cleaning agents, or other damaging chemical components.
- Damage due to improper exposure to extreme temperatures (e.g. freeze fractures, thermal deformation of components, etc.)
- Damage from permanent exposure to ultraviolet radiation.
- Damage caused by inadequate maintenance.

- Any damage caused by failure to comply with the instruction manual
- Any product that has been attempted to be repaired by an unqualified professional.
- Any product connected to an inadequate power source (amps, voltage, frequency).
- Any damage caused by external influences (water, chemicals, physics, shocks) or foreign substances.
- Use of unsuitable accessories or parts.
- It does not include defects in normal wear parts, nor does it cover damage or defects resulting from abuse, accidents or alterations, nor transportation costs.

The warranty is also void if the product has been altered or modified, or if the trademark/serial number on the machine has been defaced or removed.

Routine maintenance, tune-ups, adjustments or normal wear and tear are not covered under this warranty.

This manual does not cover all possible situations regarding warranty exclusions, for more information please contact your nearest Anova dealer.

7.3. In case of incident

The warranty must be correctly completed with all the requested information and accompanied by the purchase invoice.

Anova reserves the right to reject any claim where the purchase cannot be verified or where it is clear that the product was not properly maintained (maintenance, ventilation slots cleaned, lubrication, carbon brushes regularly maintained, cleaning, storage, etc.).

Private use means personal household use by an end consumer. Commercial use means all other uses, including uses for business, income-generating or rental purposes. Once the product has been used for commercial use, it will henceforth be considered a commercial product for the purposes of this warranty.

These are our standard warranty terms, but occasionally there may be additional warranty coverage not determined at the time of publication. For more information, please contact your nearest official Anova dealer or visit www.millasur.com.

Warranty service is only available through official Anova dealers. You can locate your nearest dealer on our dealer map at www.anova.es.

8. ENVIRONMENT



Ensuring that products and their components are disposed of responsibly is essential to protecting the environment. Below you can find general guidelines for the correct disposal of various materials, if used in your machine.

Dispose of your machine in an environmentally friendly manner. Machines should not be disposed of with household waste. Their plastic and metal components can be sorted according to their nature and recycled.

When disposing of metal machinery or products, it is important to keep in mind that metal components such as iron, steel or aluminium must be properly recycled at metal recycling facilities. This will contribute to the possibility of reusing them in the manufacture of new products.

Oils and Fuels

Used oils and fuels, among others, must be recycled properly. Do not pour these liquids into drains, soil, rivers, lakes or seas, as they can cause serious damage to the environment. Take them to a recycling centre or specialised collection point. This process helps to avoid water and soil contamination and to reuse the oils safely if possible.

Plastics

Plastics must be separated and taken to specific recycling points. Do not throw them away with ordinary household waste. Plastics can be recycled, contributing to waste reduction.

Cardboard

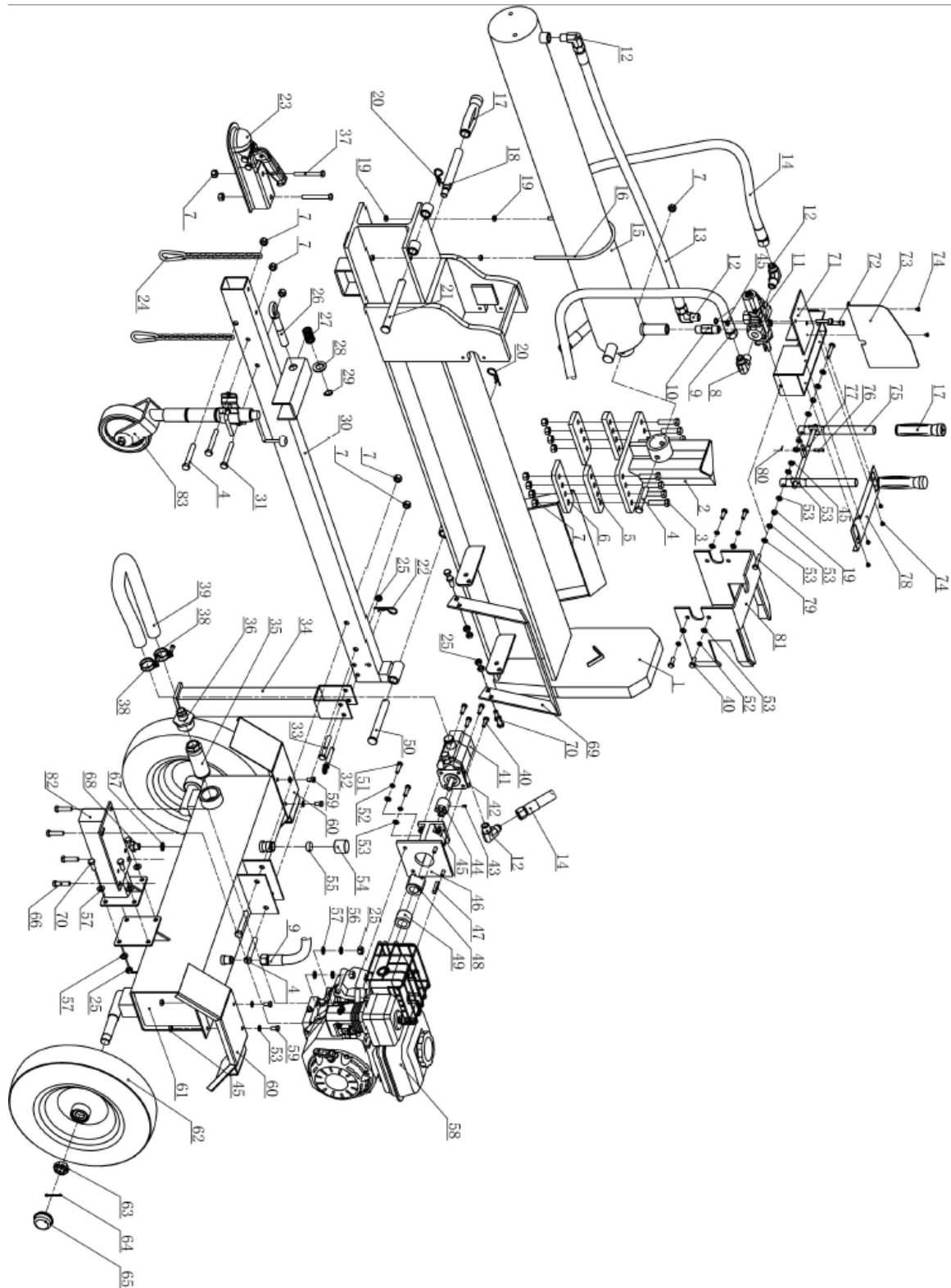
Packaging materials such as cardboard are recyclable. Make sure to separate clean, dry cardboard and place it in designated recycling bins or at an official waste collection point. Do not dispose of it with household waste.

Batteries

Batteries and other electronic components of the machines must be disposed of at specific collection points to avoid the release of toxic substances into the environment. Do not throw them away with regular waste. Take them to appropriate recycling centres for safe and responsible handling.

By following these guidelines, you are helping to protect the environment and conserve resources. For more information on disposal and recycling of the material, please contact your local authorities for the necessary information.

9. EXPLODED VIEW



10. CE CERTIFICATE

DISTRIBUTION COMPANY

MILLASUR, SLU

RUA EDUARDO PONDAL, Nº 23 PISIGÜEIRO

15688 OROSO - A CORUNA

SPAIN



EC DECLARATION OF CONFORMITY

In compliance with the various EC directives, it is hereby confirmed that, due to its design and construction, and according to the CE mark printed on it by the manufacturer, the machine identified in this document complies with the relevant and essential health and safety requirements of the aforementioned EC directives. This declaration validates the product to display the CE symbol.

In the event that the machine is modified and this modification is not approved by the manufacturer and communicated to the distributor, this declaration will lose its value and validity.

Machine name: WOOD BREAKER

Model: **RLT35GVH**

Recognized and approved standard to which it complies:

Directive 2006/42/EC
2014/30/EU

Tested according to regulations:

EN 55012:2007 + A1:2009
EN 609-1:2017

Company stamp

MILLASUR, S.L.U.
Rúa Eduardo Pondal, 23 - Pol. Emp. Sigüeiro
15688-Oroso-A Coruña
Tel. (+34) 981 69 64 65 - Fax (+34) 981 69 08 61
e-mail: millasur@millasur.com
CIF: B-15 749 922

11/11/2024