

# Wood breaker **RLT15G100**

*ANOVA*

*Instructions and user manual*



EN

Milesur SLU  
Rúa Eduardo Pondal, nº 23 - Pol. Ind. Sigüeiro  
15688 - Oroso - A Coruña - 981 696 465 - [www.millasur.com](http://www.millasur.com)





**Anova** would like to congratulate you for choosing one of our products and guarantee you the assistance and cooperation that has always distinguished our brand over time.

This machine is designed to last for many years and to be of great use if used in accordance with the instructions contained in the user manual. We therefore recommend that you read this instruction manual carefully and follow all our recommendations.

For more information or questions you can contact us through our web supports such as [www.anova.es](http://www.anova.es)

### **INFORMATION ABOUT THIS MANUAL**

Please pay attention to the information provided in this manual and on the appliance for your safety and the safety of others.

- This manual contains instructions for use and maintenance.
- Take this manual with you when working with the machine.
- Contents correct at time of printing.
- We reserve the right to make changes at any time without affecting our legal responsibilities.
- This manual is considered an integral part of the product and must remain with it in case of loan or resale.
- Ask your dealer for a new manual if it is lost or damaged.

### **READ THIS MANUAL CAREFULLY BEFORE USING THE MACHINE**



To ensure your machine provides the best results, please read the usage and safety instructions carefully before using it.

### **OTHER WARNINGS:**

Incorrect use may cause damage to the machine or other objects.

Adaptation of the machine to new technical requirements may cause differences between the content of this manual and the purchased product.

Read and follow all instructions in this manual. Failure to follow these instructions could result in serious personal injury.

# INDEX

---

1. SAFETY INSTRUCTIONS
2. PRODUCT DESCRIPTION
3. TECHNICAL SPECIFICATIONS
4. INSTALLATION AND OPERATION
5. MAINTENANCE AND TRANSPORTATION
6. TROUBLESHOOTING
7. WARRANTY
8. ENVIRONMENT
9. EXPLODED VIEW
10. CE CERTIFICATE

# 1. SAFETY INSTRUCTIONS

---

## 1.1. General safety instructions

### Important

Before operating this product, please read and follow the instructions below. To prevent injury to yourself and others, you should also follow the preventive regulations of your professional association and the safety regulations in force in your country.

Make sure that everyone who works with the product reads the safety instructions. Keep the instructions with your product and in a safe place for future reference.

- Stay alert at all times, do not use the machine if you are tired or under the influence of substances that affect your concentration. A moment of inattention is enough to cause serious injury.
- Familiarize yourself with the equipment before using it. Read and understand all operating instructions.
- Do not use the equipment for inappropriate work.
- Make sure you maintain a safe and balanced stance at all times.
- Stay close to the control and safety controls.
- When working with the machine, always wear:
  - o Safety glasses or a full-face mask.
  - o Safety gloves.
  - o Hearing protection.
  - o Safety footwear with steel toe.

Do not wear loose clothing or jewelry of any kind as they may get caught or caught.

- The operator is responsible for third parties within his work area.
- The use of this machine by children or unqualified persons is prohibited.
- Keep children and pets away from the work area.
- Do not use the machine if there are people nearby.
- Never leave the machine unattended.
- Keep the work area clear. Clutter can cause accidents.
- Do not overload the machine. The job will be done better and safer within the established parameters.
- Only use the machine with the correct and properly fitted safety accessories. Do not alter any part of the machine that could affect safety. Do not modify any part of the machine.
- Do not leave or use the machine in the rain.
- When not in use, store the machine in a dry, safe place, out of the reach of children.
- Turn off the engine in the following cases:
  - o When performing repair work.
  - o When performing maintenance or cleaning tasks.
  - o When connecting electrical cables.
  - o When inspecting the machine for faults.
  - o When transporting the machine.
  - o If the machine is to be left unattended, even for short interruptions.
- Inspect the machine for possible faults.
- You must inspect the safety systems to ensure that they are working properly before you start using the machine.

- Check that all moving parts are in good condition, that they work properly and that there are no jams. All parts must be correctly installed and comply with all standards to ensure proper operation of the machine.
- Damaged parts and protectors must be replaced or repaired by a specialized workshop.
- If the warnings printed on the machine are damaged or illegible, it must be replaced immediately.

## 1.2. Additional safety instructions

- The log splitter must be used by one person only.
- The machine must only be used by qualified persons who have read and understood the instructions.
- For safety, use protective equipment (footwear and mask or safety glasses, gloves, etc.).
- Never attempt to cut logs that contain spikes, wires or other similar objects.
- Previously cut logs and wood chips are dangerous in the work area; the operator can slip, trip or fall. Always keep the work area clear.
- Never put your hands on or near moving parts when the machine is on. Keep a safe distance from the log, push blade and wedge to avoid serious injury.
- Before you start splitting logs, make sure the cutting wedge has been lubricated to allow for smooth operation.

## 1.3. Residual risks

### Important








Even if the equipment complies with the relevant product safety regulations, there may be residual risks given the characteristics of the equipment and the work for which it has been designed.



Residual risks can be minimized by following the safety instructions.

- You will reduce the risk of personal injury and equipment damage by following these instructions and being careful. Failure to follow these safety instructions may result in injury to the operator or property damage.
- Lack of care, incorrect use or failure to follow safety rules can result in injury to hands and fingers when the wedge is in motion.
- There is a risk of hearing loss when working with the machine without protection for long periods.

*Note: Even if you take preventive measures, there may be residual risks that are not obvious.*

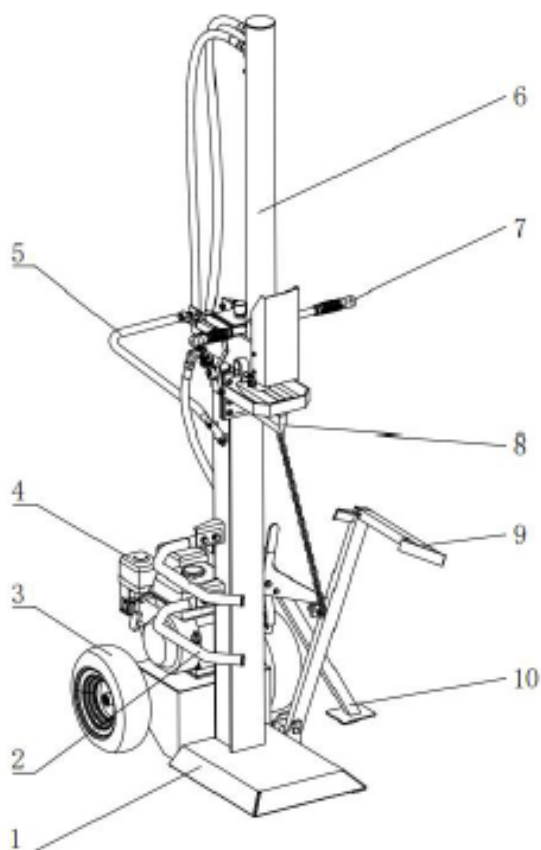
## 1.4. Safety symbols

	<p>The engine is shipped without oil. Before starting the engine, fill it with correct engine oil. Refer to your engine manual for more information.</p> <p>The hydraulic oil tank is shipped without oil. When adding oil, check that the oil level is 1 from the top of the hydraulic system reservoir (not including the filler neck). Closely inspect all components of the product.</p>
	<p>Read this manual. Serious injury may occur if safety instructions are not followed. Everyone who uses this product must read and fully understand all safety rules, operating instructions and maintenance instructions. Keep people not trained to use this machine away.</p>
	<p>This is the safety alert symbol. It is used to alert you to potential personal injury hazards. Obey all safety messages that follow this symbol to avoid possible serious or fatal injury.</p>
	<p>Crushing Hazard. The wedge can cause serious cuts. Keep both hands away from the wedge and other hazardous components. Serious accidents can occur when other people are allowed into the work area. Keep all others out of the work area while operating the machine. Do not wear loose clothing. You may become entangled in the moving parts of the product. Use the product only in daylight so that you can see while working.</p>
	<p>Flying objects. Pieces of log may fly out during splitting. Wear safety glasses. Serious eye injuries may occur.</p>
	<p>Danger of injection into the skin.</p> <ul style="list-style-type: none"> <li>- Make sure all fittings are tight before applying pressure. Relieve system pressure before performing maintenance.</li> <li>- Do not check for leaks with your hand. Instead, use a piece of cardboard to check for leaks.</li> <li>- If skin injection occurs, seek medical attention immediately.</li> </ul>
	<p>Risk of fire and explosion Hot engine exhaust gases can cause a fire. Gasoline is highly flammable and explosive. You can be burned or seriously injured when handling fuel.</p> <ul style="list-style-type: none"> <li>- Place the exhaust at least 7 feet from combustible objects.</li> <li>- Before adding fuel, stop the engine and keep away from heat, sparks and flames. Do not add fuel when the engine is running or still hot. Do not smoke near the engine.</li> <li>- Use an approved fuel container to transport fuel. Clean up fuel spills immediately.</li> <li>- Store and handle fuel outdoors only. Gasoline vapors may ignite if allowed to accumulate indoors. An explosion may occur.</li> <li>- Do not change or add to the exhaust system. Fire may occur.</li> <li>- Do not change or add fuel tanks or fuel lines. Fire may result.</li> <li>- Before each use, check the fuel tank and fuel system lines for leaks. Any fuel leak is a fire hazard. Repair any fuel leak before starting the engine.</li> <li>- During transportation, take precautions to ensure that the machine does not tip over and cause a fire hazard due to fuel leakage.</li> </ul>

	<p>Respiratory hazard. Engine fumes are toxic and harmful. Do not use the product indoors even if it is ventilated. For outdoor use only.</p>
	<p>Hot exhaust. You can burn yourself on it. Do not touch.</p>
<p><i>Note: Keep these instructions and always carry them with the machine. It is important to follow all safety measures to minimize risks.</i></p>	

## 2. PRODUCT DESCRIPTION

### 2.1. Machine parts



- (1) Main support
- (2) Trunk protector
- (3) Wheel
- (4) Engine
- (5) Handlebar

- (6) Hydraulic cylinder
- (7) Control handle
- (8) Wedge
- (9) Lifting logs
- (10) Support foot

### 3. TECHNICAL SPECIFICATIONS

Characteristics	
Engine	4 times
Power	7 HP
Displacement	208cc
Recommended engine oil type	SAE30
Power working pressure	15Tn – 3500psi
Control valve (hydraulic cylinder)	2 speeds (dual stage)
Cutting cycles	
Fast forward (forward)	7 s
Slow forward (forward)	36 s
Recoil	30 s
Total hydraulic tank capacity	10L*
Hydraulic oil type	Hydraulic 46
Cutting length (max.)	110 cm
Cutting Ø (max.)	40 cm
Noise level	110 dB
Gross weight	160 kg

*Note: Due to design improvements and/or changes in specifications, this manual may be modified without prior notice and without the need to change the document.*

*\*Recommended for work fill 7.5L.*

### 4. INSTALLATION AND OPERATION

#### 4.1. Unpacked

After unpacking the product, check the contents of the box:

- Place the shipping box on a solid, flat surface.
- Verify that all breaker parts and accessories are in the box before beginning assembly.

#### **Attention**

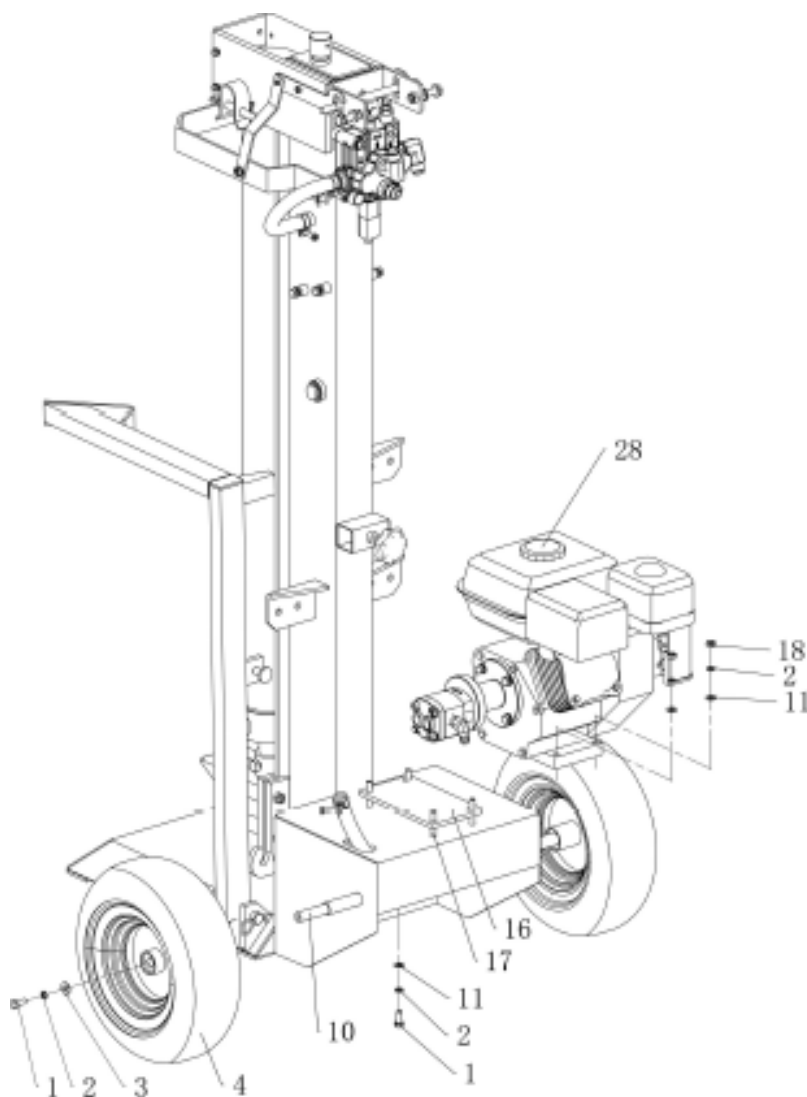
Make sure that it contains all the indicated material. Check that it has not been damaged in transit.

Please inform the dealer or supplier immediately of any damage or missing parts, as claims submitted after this date will not be recognised.

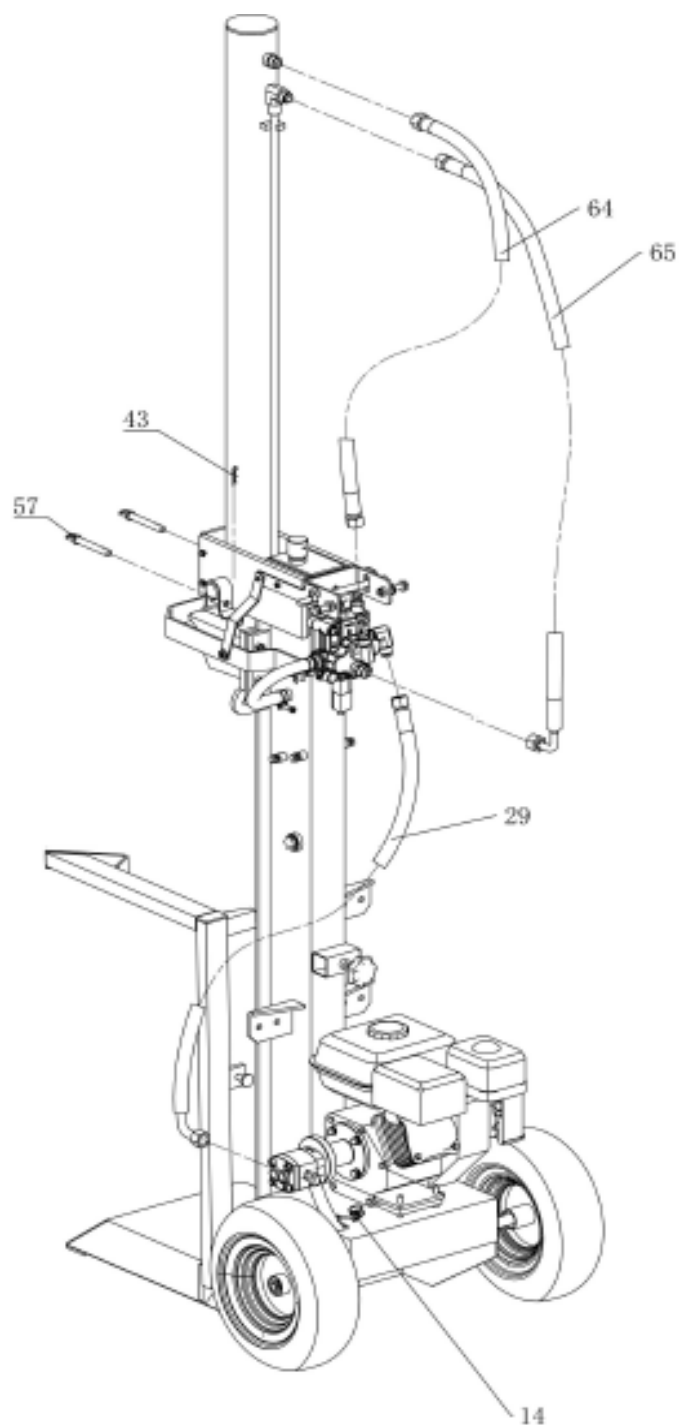


## 4.2. Mounting

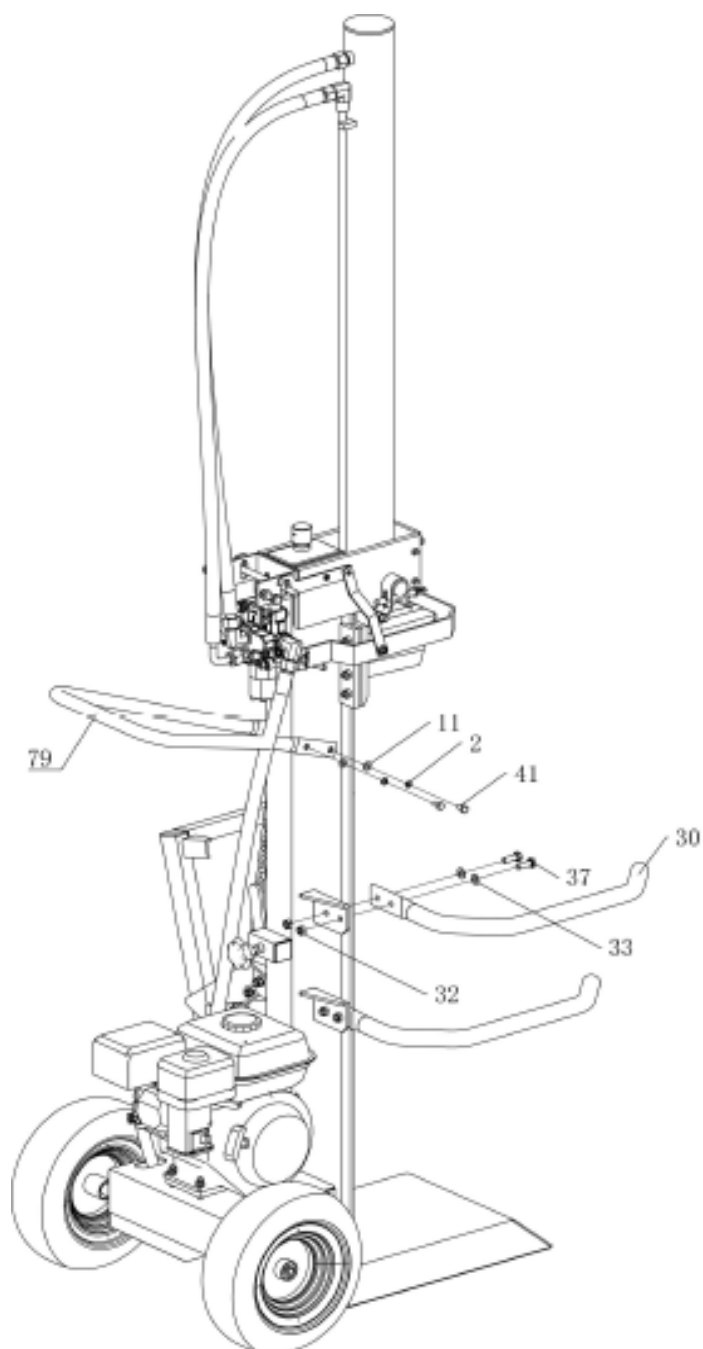
1. Insert the wheel axle (10) into the tube and secure it using:
  - M8x20 bolt (1)
  - Flat Washer Ø8 (2)
  - Washer Ø8 (11)
2. Mount the wheels (4) on both sides using:
  - Washer Ø8x20x2 (3)
  - Flat Washer Ø8 (2)
  - M8x20 bolt (1)
3. Install the engine using:
  - The shock absorbing pad (16)
  - The M8x45 bolt (17)
  - Washer Ø8 (11)
  - Flat washer Ø8 (2)
  - M8 lock nut (18)



4. Lift the hydraulic cylinder (43) and secure it with the pin (57) on both sides.
5. Install oil pipe C (29), oil pipe B (64) and oil pipe A (65) in the correct position as shown in the photo below.
6. Connect the oil suction pipe of the pump and the oil tank and secure it with the ring (14).



7. Install the bar (79) using:
  - Washer Ø8 (11)
  - Flat Washer Ø8 (2)
  - The M8x16 Bolt (41)
8. Install the guard arm (30) using:
  - A M10x30 bolt (37)
  - A washer Ø10 (33)
  - An M10 lock nut (32)

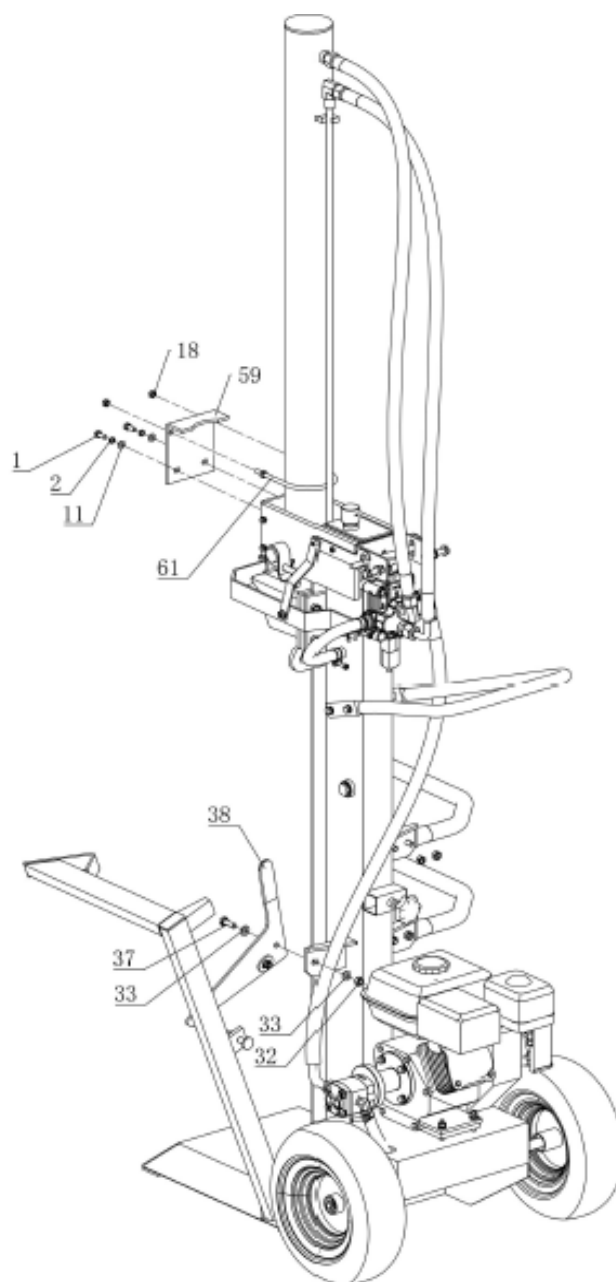


9. Install the cylinder guard plate (59) using:

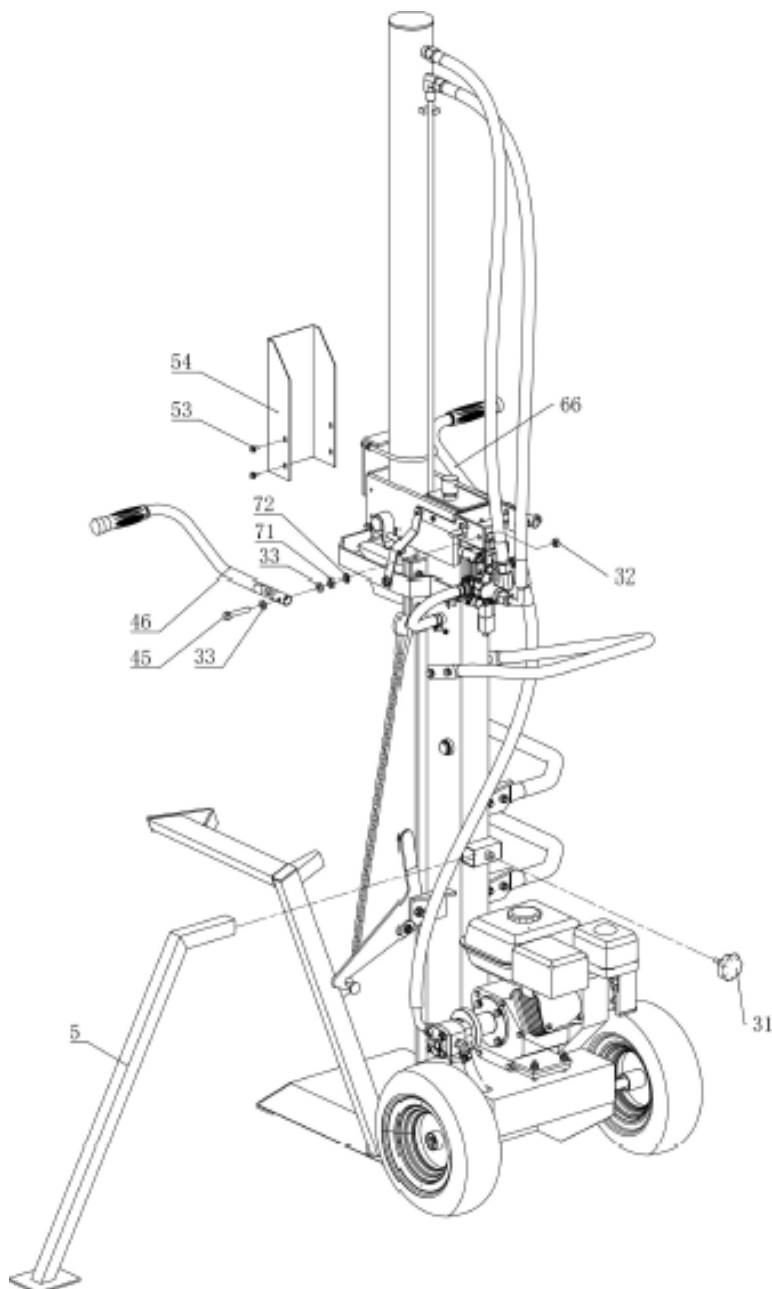
- The cylinder ring (61)
- M8 lock nut (18)
- Washer Ø8 (11)
- Flat washer Ø8 (2)
- The M8x20 bolt (1)

10. Install the hook plate (38) with:

- The M10x30 bolt (37)
- Washer Ø10 (33)
- M10 lock nut (32)



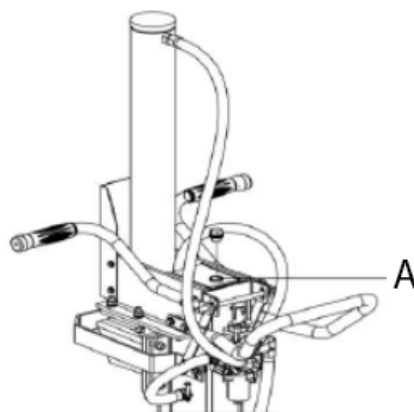
11. Mount the plate (54) with 4 M6x12 Screws (53) on both sides.
12. Install the control handle (46 and 66) on both sides using:
  - M10x55 bolt (45)
  - Washer Ø10 (33)
  - M10 Nut (71)
  - Spring washer 10 (72)
  - Locknut M10 (32)
13. Insert the support foot (5) into the tube and secure it with the star knob (31).



### 4.3. Start-up

Before using the product, make sure that the hydraulic oil is filled sufficiently before using the machine.

- Remove the oil tank cap, fill in enough hydraulic oil and secure it tightly before use. Follow the instructions and refer to the capacity and type of oil to be used.



A: Oil tank cap

1. The machine must be positioned so that it is stable and secure against slipping. Leave enough space around your machine so that you can use it safely.
2. Make sure that no unauthorized persons (especially children) can approach your work area.
3. Before starting the machine, all guards and safety devices must be correctly fitted. Check that all screws, bolts, hydraulic couplings and clamps are properly tightened. Always ensure that the hydraulic oil level is sufficient before each start-up.
4. This machine must never be used when it is in poor condition or in need of maintenance. Before using this product, familiarize yourself with its controls, safety features and operation.

#### 4.3.1. Size of the trunks

1. Choose your work site with your safety standards in mind. Have the logs you are splitting on hand. Remove split logs from the work area.
2. Before splitting logs, separate those that do not meet the specifications in this manual, both in terms of maximum permitted length and maximum width. Using the product with logs that do not meet these specifications will increase the likelihood of serious material and personal injury.
3. Always choose the appropriate height for the respective trunk length. Always use the locking device to secure the table in the desired position.
4. Do not operate this log splitter under full load for more than 5 seconds.

#### **▲ Important**

Never try to split fresh wood. Dry wood is much easier to split than fresh, wet logs. Plus, it doesn't tend to jam as much during cutting.

## 4.4. Operating instructions

1. Push the control valve handle forward with both hands to split the log.
2. Push the control valve handle back with both hands to return the wedge to its original position.
3. Remove split wood from the work area.

*Note: Serious accidents can occur when other people are allowed into the work area. Keep all others out of the work area while using the product.*

### **Warning**



#### Crushing hazard

The wedge can cause serious personal injury. Keep both hands away from the wedge and other dangerous machine components.

- Do not wear loose clothing. You may become entangled in the moving parts of the product.
- Only use the machine during the day so you can see what you are doing.

## 5. MAINTENANCE AND TRANSPORTATION

### 5.1. Maintenance

Before performing cleaning and maintenance tasks, the log splitter must be placed in maintenance mode.

- Turn off the engine.
- Move the control valve handle back and forth to relieve hydraulic pressure.
- Use protective gloves to avoid hand injuries.

After performing maintenance, make sure all guards and safety features are in place. Failure to follow this warning may result in serious injury.

*Important note: For all operations relating to the use and maintenance of the engine not described in this manual, refer to the corresponding manuals.*

Basic checks and maintenance after each use:

That	When	As
Hoses and tubes	Each use	Inspect for exposed wire mesh and leaks. Replace all worn or damaged hoses before starting the engine.
Hydraulic accessories	Each use	Inspect for cracks and leaks. Replace all damaged accessories before starting the engine.
Nuts and bolts	Each use	Check for loose screws, nuts or bolts
Beam	Each use	Apply grease to the surface of the beam
Moving parts	Each use	Clearing debris

After carrying out cleaning and maintenance tasks, any safety devices that have been removed must be correctly refitted and the relevant operational tests must be carried out.

Use only manufacturer-approved parts. Use of non-manufacturer-approved parts may cause damage or injury.

Make sure you have removed any tools from the machine after performing maintenance tasks.

Any other maintenance or repair work not described in this manual must be carried out by a qualified professional.

Please follow these instructions to keep the machine in good condition:

- Clean the machine carefully after use.
- Loosen any fasteners or grips.
- Check for damaged or worn parts.
- Remove any remaining resin.
- Check that the parts of the machine that need to be lubricated are so.
- Regularly check that the connections are properly connected and that there are no leaks from the hydraulic pipes or connections.
- Correct any faulty mounting or placement of protective elements.

### 5.1.1. Residual hydropower

Residual energy must be released from pressurized hydraulic fluid before performing any maintenance or repair work on the product. Hydraulic fluid can remain highly pressurized even when the engine is off. Escaping pressurized hydraulic fluid can penetrate skin and cause serious injury.

To release residual hydraulic energy:

1. Turn off the engine
2. Move the control valves back and forth, from one travel limit to the other, at least four times.
3. Hold the valve for three seconds at each travel limit.

### **Warning**



#### Skin injection hazard

High-pressure fluid can be injected under the skin and cause serious or fatal injuries.

- Make sure all fittings are tight before applying pressure. Relieve system pressure before performing maintenance.
- Do not check for leaks with your hand. Instead, use a piece of cardboard to check for leaks.
- If skin injection occurs, seek immediate medical help.

## 5.2. Transport

Push the wedge all the way in before moving the equipment.

To transport, grab the handlebar and tilt the machine slightly towards you. The log splitter can be easily moved in this position using the wheels.

Make sure the oil tank cap is tightly closed to prevent spills during transport.



## 6. TROUBLESHOOTING

### **Warning**

Do not perform any maintenance actions with the engine running. Turn off the machine and unplug the equipment.

Problem	
The cylinder rod does not move	SOLUTION: A, D, E, H, J
Slow speed of cylinder shaft when extending or retracting	SOLUTION: A, B, C, H, I, K, L
The wood does not split or splits very slowly.	SOLUTION: A, B, C, F, I, K
The motor stalls when cutting	SOLUTION: G, L
Engine stalls under low load conditions	SOLUTION: D, E, L, M

Possible cause	Solution
A- Insufficient oil to pump	Check the oil level in the oil tank
B- Air in oil	Check the oil level in the oil tank
C- Excessive vacuum at pump inlet	Check the pump inlet hose for obstructions or kinks.
D- Blocked hydraulic lines	Flush and clean the splitter hydraulic system.
E- Control valve blocked	Flush and clean the splitter hydraulic system.
F- Low control valve setting	Adjust the control valve with a pressure gauge.
G- High control valve adjustment	Adjust the control valve with a pressure gauge.
H- Damaged control valve	Please contact your official dealer.
I- Internal control valve leak	Please contact your official dealer.
J- Internal cylinder leak	Please contact your official dealer.
K- Internally damaged cylinder	Please contact your official dealer.
L- Engine control out of adjustment	Adjust the idle control nuts.
M- Engine loads during idle mode	Use a shorter length log (20" or less) to allow the engine to accelerate before contact.

**Note:** If you have any questions or problems persist after performing the above operations, please contact your official distributor.

## 7. WARRANTY

If your product suffers from a manufacturing defect during the established warranty period, please contact or go to your point of sale directly with the necessary documentation.

Your purchase invoice should be kept as proof of the date of purchase. Your tool must be returned to your dealer in an acceptable and clean condition, in its original box, if applicable to the unit, accompanied by your corresponding proof of purchase.

## 7.1. Warranty period

The legal warranty period for the product begins on the original date of purchase by the first initial buyer and its duration will be that established by the Royal Decree-Law on the protection of consumers and users against situations of social and economic vulnerability of the year corresponding to the time of acquisition of the product.

Some countries do not allow limitations on how long an implied warranty lasts or do not allow the exclusion or limitation of consequential or incidental damages, so the above limitation and exclusion may not apply to you. This warranty gives you specific legal rights, and you may also have other rights which vary from state to state or country to country.

## 7.2. Exclusions

This warranty does not cover product damage or performance problems caused by:

- Natural wear and tear.
- Misuse, neglect, careless operation or lack of maintenance.
- Defects caused by incorrect use, damage caused by manipulations carried out by personnel not authorised by Anova or use of non-original spare parts.
- Defects in normal wear parts such as bearings, brushes, cables, plugs or accessories such as drills, bits, saw blades, etc.
- Damage or defects resulting from abuse, accidents or alterations.
- Incorrect use and storage (explicit reference that the rules described in the operating instructions have not been complied with).
- Customer-caused wear (e.g. broken saw blades, worn carbon brushes, etc.).
- Wear and secondary damage due to lack of maintenance, repair, lubricants (e.g. overheating damage due to blocked cooling slots, bearing damage as a result of dirt, frost damage, etc.)
- Damage as an obvious result of overuse/overloading.
- Damage caused by inappropriate supplies (e.g. incorrect fuel)
- Load-induced breakage of housing components or accessories due to abnormal stress
- Load-induced deformation of housing components or accessories due to abnormal stress.
- Damage resulting from the operation of supplies that are overfilled or leak due to improper storage, inappropriate cleaning agents, or other damaging chemical components.
- Damage due to improper exposure to extreme temperatures (e.g. freeze fractures, thermal deformation of components, etc.)
- Damage from permanent exposure to ultraviolet radiation.
- Damage caused by inadequate maintenance.
- Any damage caused by failure to comply with the instruction manual
- Any product that has been attempted to be repaired by an unqualified professional.
- Any product connected to an inadequate power source (amps, voltage, frequency).
- Any damage caused by external influences (water, chemicals, physics, shocks) or foreign substances.
- Use of unsuitable accessories or parts.
- It does not include defects in normal wear parts, nor does it cover damage or defects resulting from abuse, accidents or alterations, nor transportation costs.

The warranty is also void if the product has been altered or modified, or if the trademark/serial number on the machine has been defaced or removed.

Routine maintenance, tune-ups, adjustments or normal wear and tear are not covered under this warranty.

This manual does not cover all possible situations regarding warranty exclusions, for more information please contact your nearest Anova dealer.

### 7.3. In case of incident

The warranty must be correctly completed with all the requested information and accompanied by the purchase invoice.

Anova reserves the right to reject any claim where the purchase cannot be verified or where it is clear that the product was not properly maintained (maintenance, ventilation slots cleaned, lubrication, carbon brushes regularly maintained, cleaning, storage, etc.).

Private use means personal household use by an end consumer. Commercial use means all other uses, including uses for business, income-generating or rental purposes. Once the product has been used for commercial use, it will henceforth be considered a commercial product for the purposes of this warranty.

These are our standard warranty terms, but occasionally there may be additional warranty coverage not determined at the time of publication. For more information, please contact your nearest official Anova dealer or visit [www.millasur.com](http://www.millasur.com).

Warranty service is only available through official Anova dealers. You can locate your nearest dealer on our dealer map at [www.anova.es](http://www.anova.es).

## 8. ENVIRONMENT



Ensuring that products and their components are disposed of responsibly is essential to protecting the environment. Below you can find general guidelines for the correct disposal of various materials, if used in your machine.

Dispose of your machine in an environmentally friendly manner. Machines should not be disposed of with household waste. Their plastic and metal components can be sorted according to their nature and recycled.

When disposing of metal machinery or products, it is important to keep in mind that metal components such as iron, steel or aluminium must be properly recycled at metal recycling facilities. This will contribute to the possibility of reusing them in the manufacture of new products.

#### Oils and Fuels

Used oils and fuels, among others, must be recycled properly. Do not pour these liquids into drains, soil, rivers, lakes or seas, as they can cause serious damage to the environment. Take them to a recycling centre or specialised collection point. This process helps to avoid water and soil contamination and to reuse the oils safely if possible.

Plastics

Plastics must be separated and taken to specific recycling points. Do not throw them away with ordinary household waste. Plastics can be recycled, contributing to waste reduction.

Cardboard

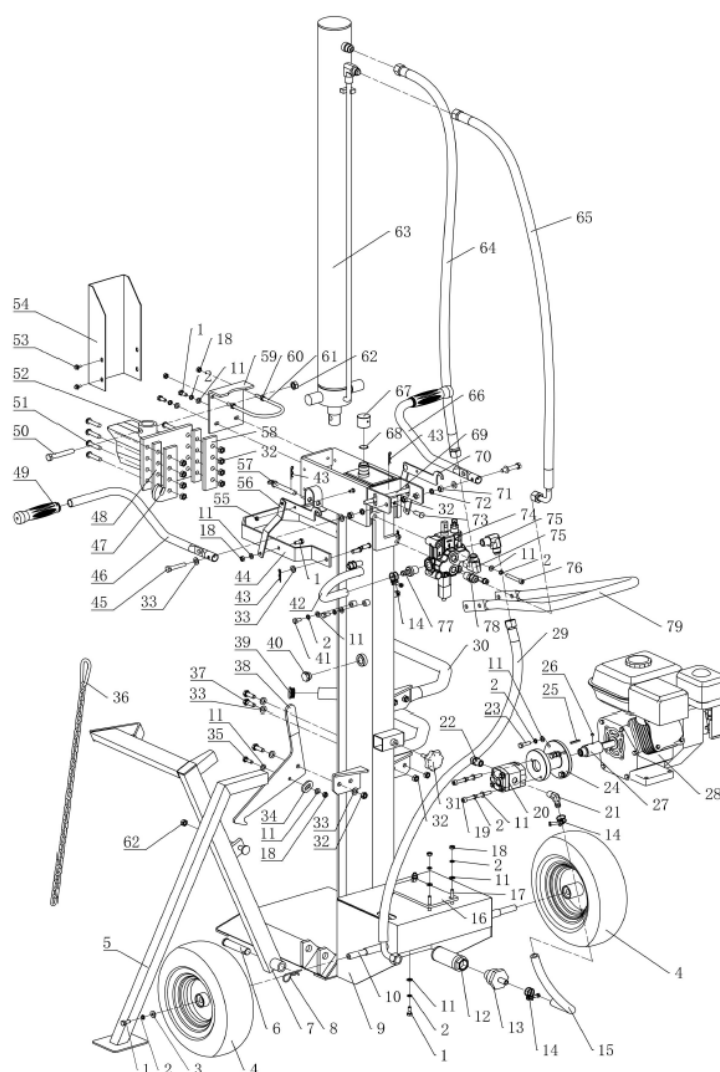
Packaging materials such as cardboard are recyclable. Make sure to separate clean, dry cardboard and place it in designated recycling bins or at an official waste collection point. Do not dispose of it with household waste.

Batteries

Batteries and other electronic components of the machines must be disposed of at specific collection points to avoid the release of toxic substances into the environment. Do not throw them away with regular waste. Take them to appropriate recycling centres for safe and responsible handling.

By following these guidelines, you are helping to protect the environment and conserve resources. For more information on disposal and recycling of the material, please contact your local authorities for the necessary information.

## 9. EXPLODED VIEW



## 10. CE CERTIFICATE

### DISTRIBUTION COMPANY

MILLASUR, SL

RUA EDUARDO PONDAL, Nº 23 PISIGÜEIRO

15688 OROSO - A CORUNA

SPAIN



## EC DECLARATION OF CONFORMITY

In compliance with the various EC directives, it is hereby confirmed that, due to its design and construction, and according to the CE mark printed on it by the manufacturer, the machine identified in this document complies with the relevant and essential health and safety requirements of the aforementioned EC directives. This declaration validates the product to display the CE symbol.

In the event that the machine is modified and this modification is not approved by the manufacturer and communicated to the distributor, this declaration will lose its value and validity.

Machine name: WOOD BREAKER

Model: **RLT15G100**

Recognized and approved standard to which it complies:

**Directive 2006/42/EC**  
**2014/30/EU**

Tested according to regulations:

**EN 55012:2007 + A1:2009**  
**EN 609-1:2017**

Company stamp

**MILLASUR, S.L.U.**  
Rúa Eduardo Pondal, 23 - Pol. Emp. Sigüeiro  
15688-Oroso-A Coruña  
Tel. (+34) 981 69 64 65 - Fax (+34) 981 69 08 61  
e-mail: millasur@millasur.com  
CIF: B-15 749 922

11/11/2024