

# Instructions

# RLT12VH



# ALNOVA®

Millasur, SL.  
Rúa Eduardo Pondal, nº 23 - Pol. Ind. Sigüeiro  
15688 - Oroso - A Coruña 981 696465 [www.millasur.com](http://www.millasur.com)

EN



**ANOVA** wishes to congratulate you on choosing one of our products and guarantees you the assistance and cooperation that has always distinguished our brand over time.

This machine is designed to last for many years and be very useful if used according to the instructions in the user manual. We therefore recommend that you read this instruction manual carefully and follow all our recommendations.

For more information or questions, please contact us through our web support services, such as [www.anovamaquinaria.com](http://www.anovamaquinaria.com).

## **INFORMATION ABOUT THIS MANUAL**

Pay attention to the information provided in this manual and on the appliance for your safety and that of others.

- This manual contains instructions for use and maintenance.
- Take this manual with you when working with the machine.
- The contents are correct at the time of printing.
- We reserve the right to make changes at any time without affecting our legal responsibilities.
- This manual is considered an integral part of the product and must remain with it in the event of loan or resale.
- Ask your dealer for a new manual in case of loss or damage.

## **READ THIS MANUAL CAREFULLY BEFORE USING THE MACHINE**

To ensure your machine provides the best results, please read the operating and safety instructions carefully before using it.

### **OTHER WARNINGS:**

Incorrect use could cause damage to the machine or other objects. Adapting the machine to new technical requirements could cause differences between the content of this manual and the purchased product.

Read and follow all instructions in this manual. Failure to follow these instructions could result in serious personal injury.

# **CONTENT**

1. IDENTIFICATION OF SYMBOLS
2. SAFETY INSTRUCTIONS
3. MAIN FEATURES OF THE WOOD BREAKER
4. PREPARING THE WOOD BREAKER
5. VERTICAL/HORIZONTAL POSITION
6. USE OF THE WOOD BREAKER
7. OIL
8. TRANSPORT
9. STORAGE
10. TECHNICAL DATA
11. TROUBLESHOOTING
12. EXPLODED VIEW
13. CERTIFICATE

## 1. IDENTIFICATION OF SYMBOLS

There are a number of symbols used on the machine that you should understand before using the log splitter. These symbols relate to your safety and the correct use of the machine's parts. Please pay attention to and understand all the symbols shown in this manual.



Read the operating instructions before using the machine.



**DANGER.** Before performing any repairs, maintenance, or cleaning, turn off the engine and remove the power cord from the outlet.



Risk of cuts or fractures. Do not touch hazardous areas while the cutting blades are moving.



Do not remove the cut pieces with your hands.



No one other than the machine operator should be in the work area. Keep other people and animals out of the work area (at least 5 meters).



Wear hearing protection while working to protect your ears.



Equip a face shield to protect your eyes from flying splinters.



Equip yourself with heavy-duty protective gloves to protect against injuries from splinters or sharp edges.



Wear work boots to protect yourself from possible foot injuries.



Keep your work area tidy. Clutter in your work area can cause damage and injuries.



Oil is a flammable material and can explode. Do not smoke or start any fires in the work area.



Dispose of oil properly at an authorized collection point. Disposing of oil on the ground or in regular drainage systems is prohibited. Consult your dealer for any oil changes.



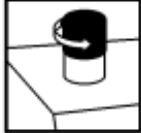
Do not remove or modify any protection or safety elements.



Always pay attention to the cutting motion of the blades.



Secure the piece to be cut with the machine's gripping clamps.



Open the oil vent before starting to use the machine.



Make sure the engine rotates in the correct direction (see arrow on the engine). Rotating it in the wrong direction will damage the oil pump.



#### Packaging:

Do not dispose of electrical components in the general trash. Consult your local waste collection center for recycling information on each component.

According to European Directive 2002/96/EC on electrical waste, these must be disposed of at an authorized recycling center. Consult your dealer for the location where you should go.



### **HYDRAULIC SYSTEM**

Never use the machine if you notice any oil leaks in the system. Inspect the machine before each use and look for any leaks. Keep the work area and the machine clean and make sure there is no spilled oil. This can cause falls, slipping of the cutting tools, or even fires.



### **PHYSICAL HAZARDS**

Splitting firewood poses a physical hazard. Never operate the machine without proper protective gloves, safety footwear, and approved eye protection. Pay attention to the resulting pieces and avoid cutting yourself or blocking the machine. Never attempt to split pieces too large or too small for the machine's capacity. Keep the machine and work area clean while splitting firewood. Chopped wood and chips stored around the machine can be hazardous to you and cause falls. Keep coworkers or bystanders at a distance, and never allow anyone unfamiliar with the machine or who has not read the instructions to operate the log splitter.

The machine must be placed on a flat, solid surface to prevent it from becoming unbalanced and falling.

Note: These safety recommendations do not cover all possible work situations that may present a hazard. The user must use common sense and operate the

machine safely.

## 2. SAFETY INSTRUCTIONS



**CAUTION:** As with all machinery, there are certain risks inherent in the use of this log splitter. Caution and attention by the user will help reduce the risk of personal injury. Failure to follow normal precautions could result in hazardous situations and serious injury to the operator or damage to the machine.

- Read and familiarize yourself with the manual. Know the type of use, limits, and potential hazards of the machine.
- Inspect the machine for damaged parts. Check the guards and other parts that may be damaged to ensure the machine is operating properly. Check that moving parts are undamaged and operating properly. Check the mounting and other points on the machine that could affect its performance. Any damaged guard or structural element of the machine must be replaced.
- Make sure the guards and side bars are in their correct position.
- Always wear hearing protection, eye protection, and gloves.
- Remove any adjusting key you have used on the machine before starting to use it.
- Never operate the machine under the influence of medication, drugs, or alcohol that may affect your control capabilities.
- Do not climb on the machine under any circumstances.
- Do not leave the machine plugged in or running unattended. Turn off the machine if you leave the work area.
- Keep your hands away from the blade and the workpieces being cut. Never touch the moving cutting parts of the machine while it is in operation.
- Do not wear jewelry or loose clothing that could get caught in the moving parts of the machine.
- The pump pressure must never be adjusted at the user's discretion, otherwise all warranty conditions will be voided.

### Specific safety instructions for the log splitter



**CAUTION:** Using such a powerful machine may involve certain specific hazards. Pay special attention to your safety and that of others. Always follow safety recommendations to reduce the risk of damage or injury.

- The machine must be operated by one person only.
- Never attempt to split logs larger than those indicated in this manual. There should also be no wire, strap, or metal debris in the log, as these could damage

the machine. The log to be split should be free of branches and have a flat base. Cut the log following the growth pattern of the log. NEVER place a log perpendicular to the splitting axe (across the log), as this could damage the machine.

- The log splitter must be operated with both hands.
- The log splitter should only be used by adults with full capacity.
- Never place two logs to be cut at a time. This could cause kickback and cause injury.
- Never place a new log in the machine without finishing splitting and removing the old one.
- When the machine is in operation, a minimum distance of 5 meters must be maintained for any observer or animal.
- Never force the machine to split extremely hard logs for more than 5 seconds. Hot oil under high pressure can damage the machine. Stop the machine and turn the log over to try again. If the log still cannot be split, discard it; its hardness is greater than the machine's capacity, and it will not be able to split it.
- Never leave the machine running unattended. Turn it off and unplug it if you leave the workplace.
- The user should not be under the influence of alcohol, drugs, or medications that impair attention or driving skills. They should also not work while fatigued. Rest and work only when refreshed and in good physical condition.
- Do not use the machine in areas with gases, gasoline or other flammable materials.

### **3. MAIN FEATURES OF THE WOOD BREAKER**

Transport: Rubber wheels allow easy transport of the breaker.

Electric motor: make sure the voltage is 230V

Hydraulic piston: It is important to keep the piston cylinder clean and free of scratches to maintain its power.

Two-hand safety control: The safety system prevents you from reaching into the wood while the machine is splitting. Splitting is only performed by operating both controls simultaneously with both hands. When the controls are released and no pressure is applied, the cylinder returns to its original position.



Steel construction: high-strength welded steel.

## 4. PREPARING THE WOOD BREAKER

Follow the exploded view to clarify any assembly questions.

**IMPORTANT:** Before starting to work with the machine, you must check the hydraulic oil in the machine and open the corresponding vent.

## 5. VERTICAL/HORIZONTAL POSITION

The breaker can operate in a vertical or horizontal position. When the cutter arm is raised, the slide bar and cutter head must be in the down position.

Procedure: Remove the retaining pin. Check that the cables are not pinched in the gears. The retaining pin is secured with a strap. To change to the horizontal position, perform the same operation in reverse. Always secure the machine in its working position with the pin.



The change of working position must be carried out with the engine off.

**change the position and always secure the machine with the pin**



## 6. USE OF THE WOOD BREAKER

The size of the log to be split is a recommended measure. A smaller log, but one with many knots, may make it difficult for the machine to split it. A larger piece can be easily split if its grain is straight and knot-free. Use common sense when choosing which pieces of firewood to split.

Never force the machine for more than 5 seconds if the cut you are attempting does not

It's working. High-temperature, pressurized oil can damage the machine. It's very important if the breaker fails to split the piece on the first attempt, rotate the piece

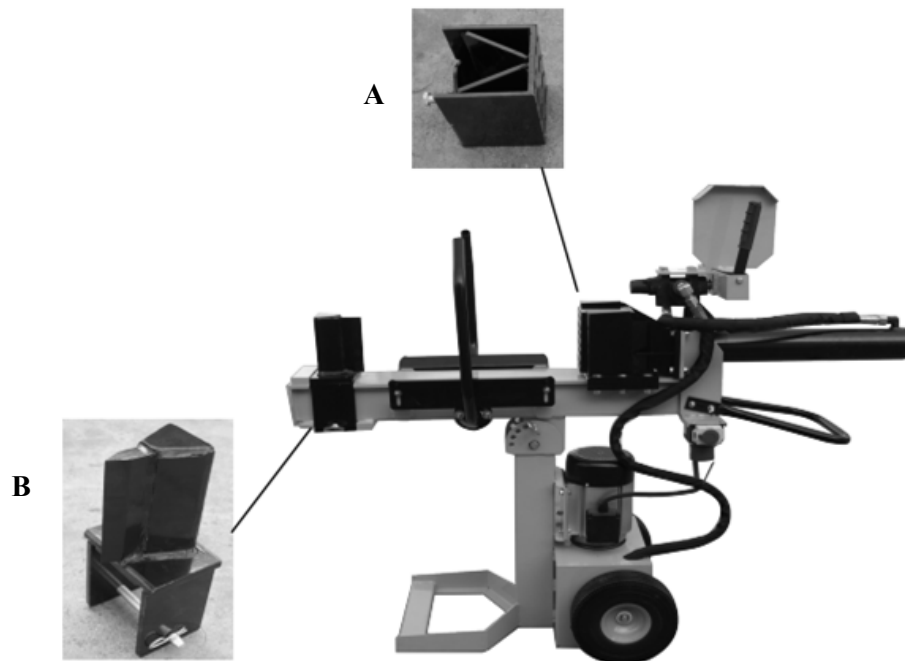


90° and try again.

Horizontal/Vertical Cut: Please check and understand correctly how to change the position.

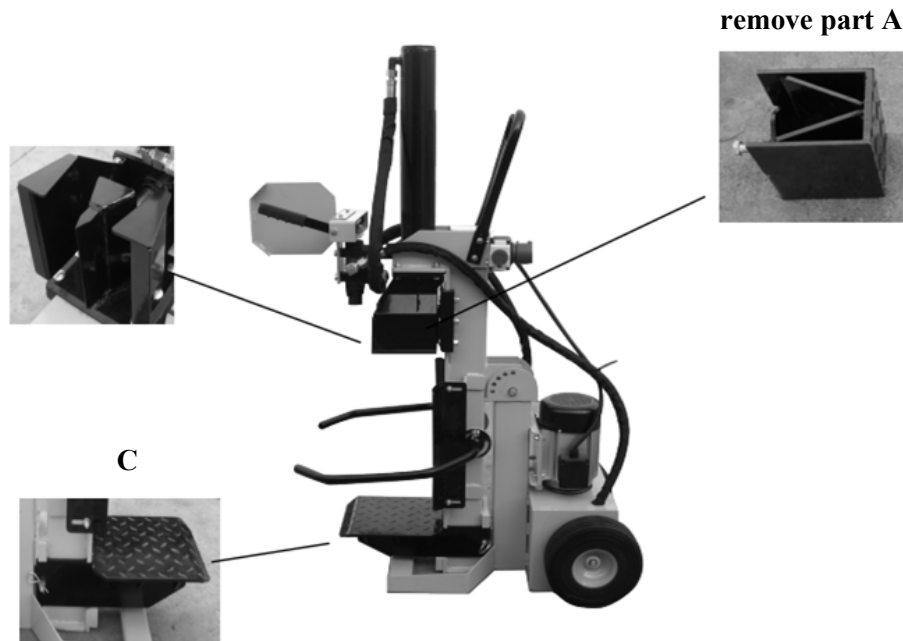
Horizontal cut: Mainly used for small logs that can be placed in the breaker.

Assemble the parts indicated A and B for this type of cut.



Vertical cut: Mainly used for large logs that are not easy to lift to a horizontal position.

Assemble part C and remove the previous part A. Apply the cut directly to the cutting blade.



## 7. OIL

The oil level is checked using the dipstick inserted into the tank cap. Use HDZ32 hydraulic oil.

Hydraulic oil must be changed at least once a year.

Inspect all hoses and connectors for leaks. If you see any leaks, stop working and repair them as soon as possible. This will prevent oil and power losses.

If the machine is used in areas with sudden temperature fluctuations, condensation may form in the oil tank. The oil will also turn white and foamy. This condition can damage the connection joints. If this happens, you must change the oil.

## 8. TRANSPORT

For any type of transport of the machine, ensure that the oil tank cap is properly tightened and the breather is also closed.

Handle the machine carefully and properly package it.

## 9. STORAGE

The log splitter can be stored either vertically or horizontally.

Clean up any debris and tightly seal any items that may leak oil (plug, breather). It is not necessary to remove the oil for storage.

Check carefully that there is no leakage.

## 10. TECHNICAL DATA

MODEL	<b>RLT12VH</b>
Power	120 kN (12T)
Maximum cutting length	520 mm
Maximum diameter length	400 mm
Hydraulic oil (type/capacity)	HDZ32 / 4.5L
Oil pressure	22 MPa (220 bar)
Electric motor	P1 3.5 kW S6 (4min/6min)
Current type	230V/3N +PE 50 Hz - 16A
Weight	116 kgs

## 11. TROUBLESHOOTING

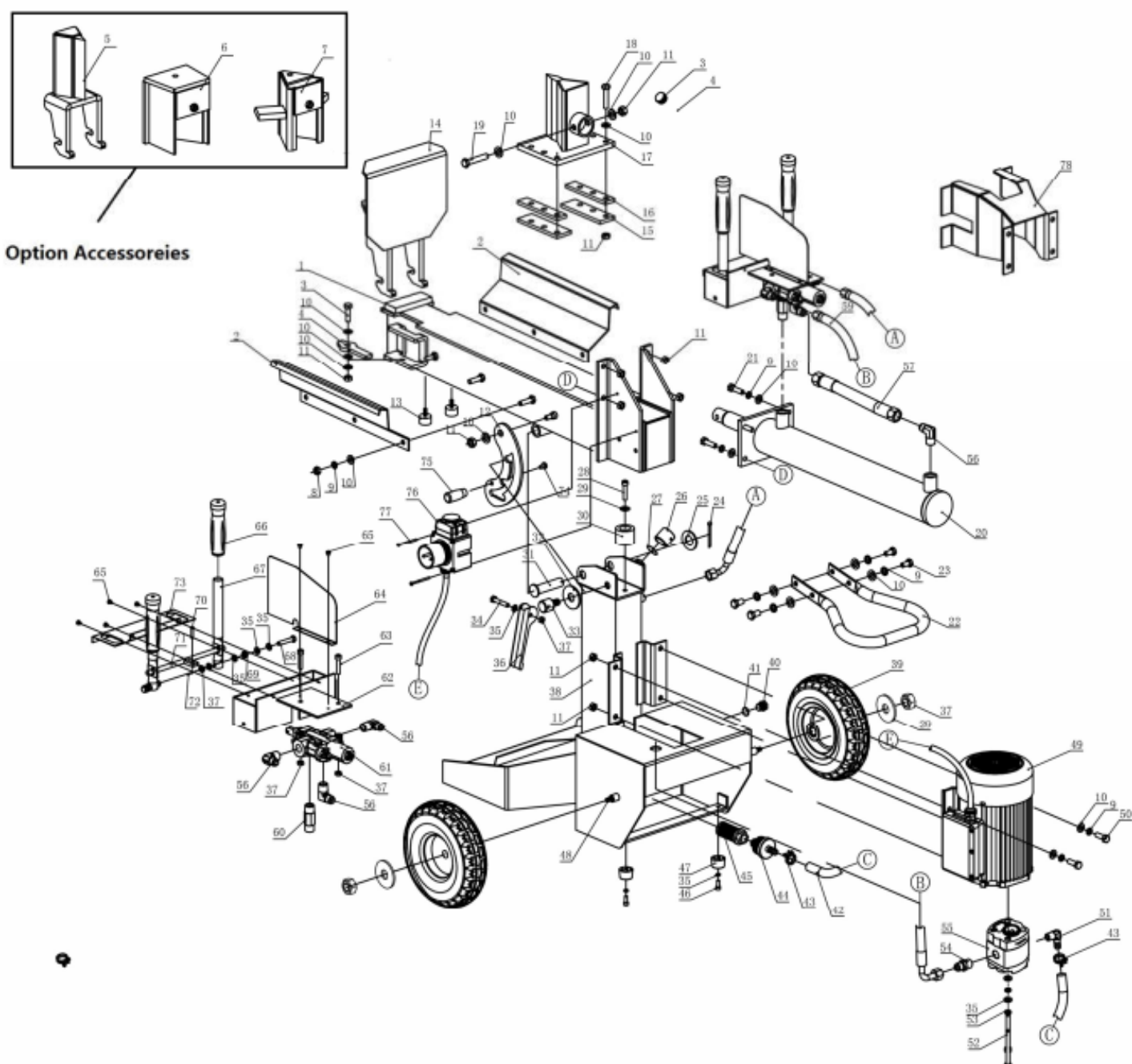
If you experience any serious problems, the user should consult the appropriate technical service center for repair and inspection of the machine. This troubleshooting guide is intended to save you from having to visit your service center for things that are easily resolved.

PROBLEM	POSSIBLE CAUSE	SOLUTION
The logs do not split correctly and are incomplete (poor performance)	<ul style="list-style-type: none"> <li>- the trunk is not well positioned</li> <li>- the log exceeds the working dimensions of the machine or is very resistant</li> <li>- the cutting blade does not enter the trunk</li> <li>- very low oil pressure</li> <li>- poorly adjusted control knobs</li> <li>- inappropriate power connection (more than 10 meters or with a very small cross-section)</li> </ul>	<ul style="list-style-type: none"> <li>- reposition the trunk more effectively</li> <li>- cut the log to the required dimension</li> <li>- sharpen the blade properly</li> <li>- Check the oil level and top up if necessary. Consult your dealer.</li> <li>- consult technical service</li> <li>- change the connection cable</li> </ul>
The cutting cylinder moves intermittently or with strong vibrations	<ul style="list-style-type: none"> <li>- presence of air in the hydraulic circuit</li> <li>- the cutting cylinder is not properly lubricated</li> </ul>	<ul style="list-style-type: none"> <li>- Check the oil level and top up if necessary.</li> <li>- Lubricate the cutting cylinder with spray grease. If this does not resolve the issue, consult your service center.</li> </ul>
The cutting cylinder does not move	<ul style="list-style-type: none"> <li>- damaged hydraulic pump</li> </ul>	<ul style="list-style-type: none"> <li>- consult your technical service</li> </ul>

The engine starts but the cutting cylinder does not move	<ul style="list-style-type: none"> <li>- the engine rotates in the opposite direction</li> </ul>	<ul style="list-style-type: none"> <li>- Check the motor's rotation direction. 3-phase: Adjust the motor's rotation direction.</li> </ul>
The engine does not start	<ul style="list-style-type: none"> <li>- there is no electricity</li> <li>- single-phase mode in three-phase motor</li> <li>- damaged connection cable</li> <li>- damaged engine</li> </ul>	<ul style="list-style-type: none"> <li>- Check the fuse and the external power outlet.</li> <li>- consult your electrician</li> <li>- replace the connection cable</li> <li>- consult your technical service</li> </ul>

**IMPORTANT:** All repairs and servicing must be performed at an authorized service center and not by the user. The user assumes all risks and loss of warranty if any repairs or replacements of non-original parts are made.

## 12. EXPLODED VIEW



## 13. EC DECLARATION OF CONFORMITY



### DISTRIBUTION COMPANY

MILLASUR, SL  
RUA EDUARDO PONDAL, Nº 23 PISIGÜEIRO  
15688 OROSO - A CORUÑA  
SPAIN



**anova**

## EC DECLARATION OF CONFORMITY

In compliance with the various EC directives, it is hereby confirmed that, due to its design and construction, and according to the CE mark printed on it by the manufacturer, the machine identified in this document complies with the relevant and fundamental health and safety requirements of the aforementioned EC directives. This declaration qualifies the product for displaying the CE symbol.

If the machine is modified and this modification is not approved by the manufacturer and communicated to the distributor, this declaration will lose its value and validity.

Machine name: WOOD CHIPPER

Model: **RLT12VH**

Recognized and approved standard to which the following are adapted:

**Directive 2006/42/EC**

**Directive 2006/95/EC**

Tested according to:

**EN 60204-1:2006/A1:2009**

**EN 609-1:1999/A2:2009**

**Testreport: 7040315136201-00**

Company seal

**millasur**

Rúa Eduardo Pondal, nº 23

Pol. Ind. Sigüeiro - 15688 Oroso - A Coruña

Tlf. 981 696465 / Fax. 981 690861

05/06/2018