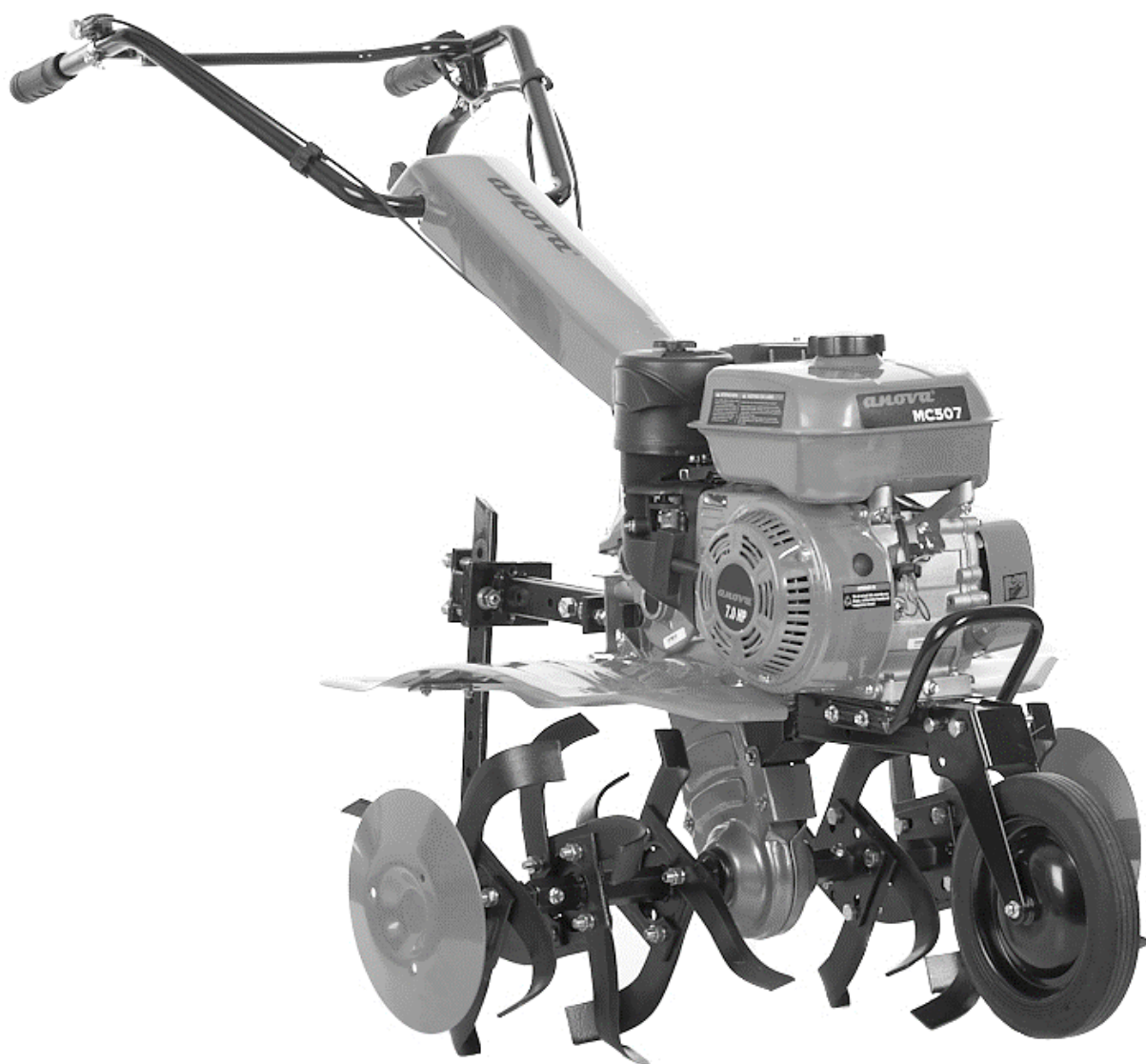


# Motor hoe

# MC507

*ANOVA*

*Instructions and user manual*



EN

Millasur SLU  
Rúa Eduardo Pondal, nº 23 - Pol. Ind. Sigüeiro  
15688 – Oroso, A Coruña - 981 696 465 - [www.millasur.com](http://www.millasur.com)





**Anova** would like to congratulate you for having chosen one of our products and guarantees the assistance and cooperation that has always distinguished our brand over time.

This machine is designed to last many years and to be of great use if used in accordance with the instructions contained in the user manual. We therefore recommend that you read this instruction manual carefully and follow all our recommendations.

For more information or questions, you can contact us through our web supports such as [www.anova.es](http://www.anova.es)

### **INFORMATION ABOUT THIS MANUAL**

Please pay attention to the information provided in this manual and on the appliance for your safety and the safety of others.

- This manual contains instructions for use and maintenance.
- Take this manual with you when you go to work on the machine.
- The contents are correct at the time of printing.
- They reserve the rights to make alterations at any time without affecting our legal responsibilities.
- This manual is considered an integral part of the product and must remain with it in case of loan or resale.
- Ask your dealer for a new manual in case of loss or damage.

### **READ THIS MANUAL CAREFULLY BEFORE USING THE MACHINE**



To ensure that your machine provides the best results, please read the usage and safety regulations carefully before using it.

### **OTHER WARNINGS:**

Incorrect use could cause damage to the machine or other objects.

Adaptation of the machine to new technical requirements could cause differences between the content of this manual and the product purchased.

Read and follow all instructions in this manual. Failure to follow these instructions could result in serious personal injury.

# INDEX

---

## **1. SECURITY INSTRUCTIONS**

- 1.1. General safety instructions
- 1.2. Security instructions

## **2. PRODUCT DESCRIPTION**

## **3. TECHNICAL SPECIFICATIONS**

## **4. DRIVING**

- 4.1. Daily maintenance
- 4.2. Check gearbox oil
- 4.3. Check the air filter

## **5. SETTINGS**

- 5.1. Handlebar height adjustment
- 5.2. Adjusting the height of the tiller
- 5.3. clutch adjustment
- 5.4. Belt tension adjustment
- 5.5. Throttle lever adjustment

## **6. INSTRUCTIONS FOR USE**

## **7. MAINTENANCE**

- 7.1. Engine maintenance
- 7.2. Maintenance of the motor hoe
- 7.3. Storage

## **8. TROUBLESHOOTING**

## **9. WARRANTY**

## **10. ENVIRONMENT**

## **11. EXPLODED VIEW**

## **12. CE CERTIFICATE**

# 1. SECURITY INSTRUCTIONS

---

## 1.1. General safety instructions

Please pay attention to the information provided in this manual and on the appliance for your safety and that of others.

Note the headings below:

- **Warning:** Indicates the possibility of serious injury or death if instructions are not followed.
- **Attention:** Indicates the possibility of damage to the device or death of the user if the instructions are not followed.
- **Note:** Indicates the possibility of damage to the appliance or the user if instructions are not followed.

### Failure warning

Any important information marked “NOTICE” alerts you to a possible breakdown if you do not follow the instructions.

### Safety notices:

- When starting the engine, place the shift lever in neutral.
- Use extreme caution when working with the tiller.
- Be careful with the blades.
- The fuel must be of good quality and free of dirt.
- Use the clutch when changing gears and lower the engine speed. Operation is safer when the engine runs at low rpm.
- Fuel is highly flammable and can catch fire and explode.

### **Important**

Because we regularly improve our products, you may find slight differences between your machine and the descriptions contained in this manual. Changes may be made to the machine without prior notice and without obligation to update the manual, although essential safety and operating features will remain unchanged. Additionally, due to technical product updates, this document is subject to change without notice.

## 1.2. Security instructions

### 1.2.1. Training

1. Please read and understand this manual before use and become familiar with all parts. Learn how to use the tiller and how to perform an emergency engine stop.
2. Never allow children to use the appliance. Also do not allow adults to use the tiller without proper preparation.
3. Keep children and animals away from the tiller during use.

### 1.2.2. Preparation

1. Carefully check the work area, removing any objects that could hinder the task from the area.
2. Before starting the engine, squeeze the clutch and place the gear lever in NEUTRAL.
3. Wear appropriate work clothing, hard hat and non-slip sole shoes.
4. Be careful when handling fuel due to its flammability.
  - a. Use a suitable tank to store fuel.
  - b. Do not refuel when the engine is on or remains hot after use.
  - c. It does not refuel inside.
  - d. Before starting the engine, tighten the tank cap securely and wipe up any spills that may have occurred.
5. Do not make any adjustments to the tiller when the engine is running (unless specified in this manual).
6. Always wear eye protection while using the tiller.

### 1.2.3. Operation

1. Do not touch the rotating parts with your hands or feet.
2. Use extreme caution when operating the tiller on cobblestones, sidewalks, and driveways. Monitor traffic and the dangers it may bring. Do not carry passengers on the tiller.
3. If the vehicle hits an obstacle, stop and check for damage, in which case it should be repaired before using the appliance again.
4. Try to avoid maneuvers that cause skidding or overturning.
5. If the tiller vibrates excessively, stop and check the engine. Strange vibrations are usually a sign of a problem.
6. Stop the engine if you are leaving the vehicle to check, clean, adjust or perform any maintenance work on the blades.
7. If no one is in control of the tiller, put the engine in neutral and turn it off.
8. Stop the engine before performing any adjustment, checking or maintenance operations. Make sure all components have stopped.
9. The exhaust pipe gives off toxic gases. Do not use the tiller indoors.
10. Do not start the device if the bumpers are not properly located.
11. Keep children and animals away from the tiller. Be careful that the motor does not overheat due to too high speed or too deep work.
12. Do not use the tiller on slippery surfaces and use caution when reversing.
13. Do not allow other passersby to approach the product.
14. The only accessories allowed by the manufacturer are: the wheel counterweight, the suspension and the cabin.
15. Do not use the tiller when visibility is reduced.
16. When working in areas where the ground is very hard, the blades can get stuck and tilt the tiller forward. If this occurs, release the handlebars and abandon the tiller.
17. Do not operate the tiller on slopes greater than 10°.
18. When working on slopes, use extreme caution to avoid overturning.

### 1.2.4. Maintenance and storage

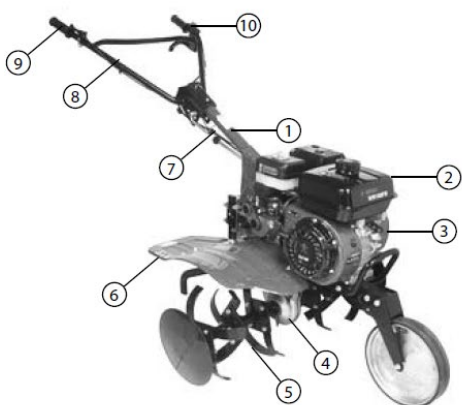
1. Always keep the tiller and its accessories in good condition.
2. Periodically check that the motor and its connections are well anchored to the structure.

3. Store the tiller indoors, away from heat sources. Make sure the motor has cooled before storage.
4. If you will not be using the tiller for a long period of time, keep the instruction manual with the appliance.
5. Do not assemble and disassemble the tiller without the correct tools and training.

## 2. PRODUCT DESCRIPTION

---

### 2.1. Identification of machine components



1. Control bar
2. Engine
3. strap cover
4. Gearbox
5. Blades
6. Mudguards
7. Gear lever
8. Handlebar



9. Accelerator
10. Starting the engine
11. Clutch
12. Bumper
13. Wheel
14. Support Bar
15. Front wheel
16. Height adjustment

### 3. TECHNICAL SPECIFICATIONS

MC507		
Machine	Measurements (mm)	1380x650x970
	Working width (mm)	500 – 1000
	Working depth (mm)	150 -300
	Gear change	-1.0 ,2.1
	Transmission type	Belt
	Transmission oil capacity (L.)	0.95
Engine	Engine model	MA212
	Maximum output power HP (kW)/rpm	7 (5.3)/3600
	Maximum torque (nm/rpm)	13.2/2500
Packaging	Dimensions (mm)	820x375x780
	20FT	124
	Net weight/total weight (kg.)	75/90
	Note	Including wheels and fenders

### 4. DRIVING

#### 4.1. Daily maintenance

##### 4.1.1. Check the oil

#### **Caution**

Operating the appliance with a low oil level can cause significant engine damage.

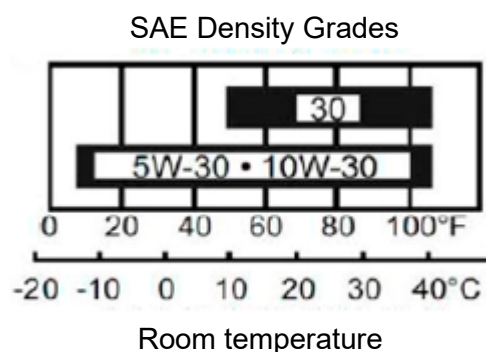
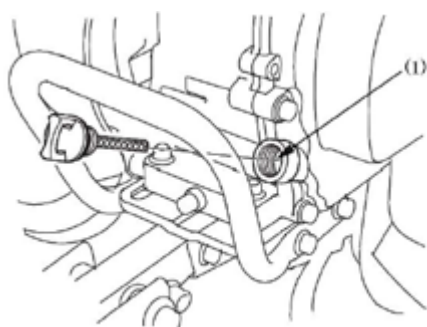
- Remove the oil tank cap and clean the dipstick.
- Insert the dipstick into the oil tank inlet without turning it.
- If the oil level is low, refill with the recommended type of oil to the top of the reservoir neck.

Use premium detergent four-stroke engine oil, certified to meet or exceed American automobile manufacturers' requirements for API SG, SF classification.

#### **Caution**

Using non-detergent or two-stroke engine oil could shorten engine life.

The use of SAE 10w30 oil is recommended for general use at any temperature. The viscosities shown in the following table are valid if the average temperature in your area does not exceed the rates shown.



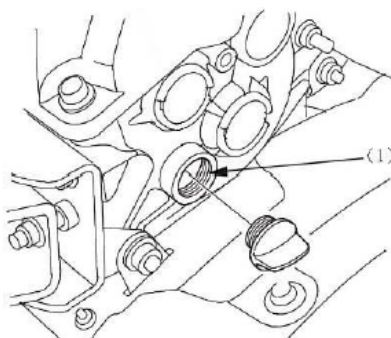
## 4.2. Check gearbox oil

Place the tiller on a stable surface and remove the oil tank cap. The oil should be at the lower limit level of the reservoir hole. Add premium engine oil if the level is low.

## 4.3. Check the air filter

### ⚠ Warning

Do not start the engine without the air filter in place.



# 5. SETTINGS

## 5.1. Handlebar height adjustment

### ⚠ Caution

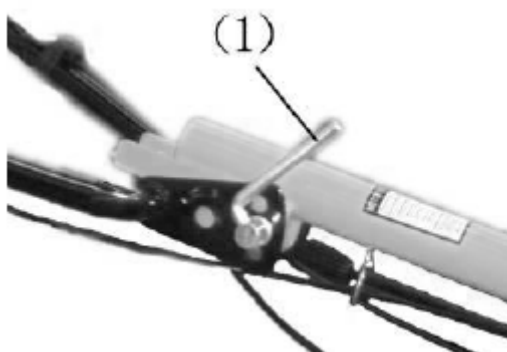
Before adjusting the handlebar, place the tiller in a firm place to prevent the handlebar from accidentally falling.

To adjust the handlebar height, loosen the adjuster, select the appropriate hole, and tighten the adjuster again.

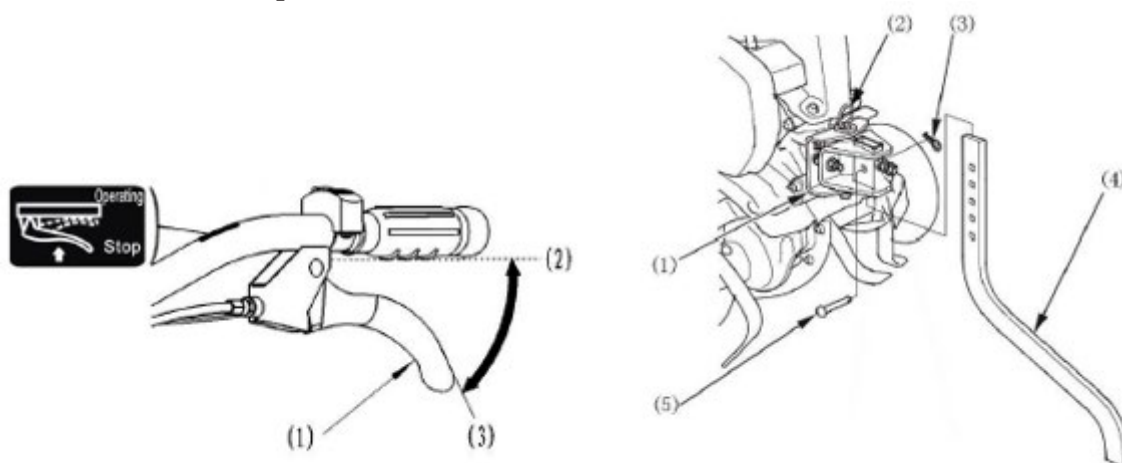


## 5.2. Adjusting the height of the tiller

Install the hitch accessory into its housing with the bolt. Adjusting the height of the tiller is carried out as follows: Remove the hitch bolt, loosen the nut securing the draw bar and raise or lower the bar to the required height.



## 5.3. Clutch adjustment



The clutch connects and disconnects the engine to the transmission.

When the clutch lever is squeezed, the clutch is engaged, and the engine is engaged. When you press the accelerator button, the blades begin to rotate.

When you release the lever, the clutch is deactivated, and the engine transmission ceases and the blades stop.

## 5.4. Belt tension adjustment

Squeeze the clutch lever and the belt pulley moves up to tighten the belt. The correct belt tension should be between 60 and 65 mm. If the belt tension is not adequate, it must be adjusted. Remove the four motor screws. If the strap is too loose, move it forward; If it is too tight, move it back. Replace the motor screws and their corresponding nuts once the proper tension is achieved.

## 5.5. Throttle lever adjustment

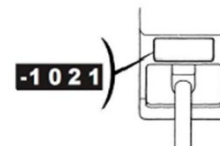
Revolutions range between 1600 rpm (+/- 150) and a maximum of 3800 rpm (+/- 50)

### 5.5.1. Speed selection

The motor hoe offers three different gears:

Speed selector:

1. Place the throttle lever in the lowest position.
2. Squeeze the clutch lever and gradually release the clutch.
3. Shift to the appropriate gear.
4. The engine will run in the selected gear.



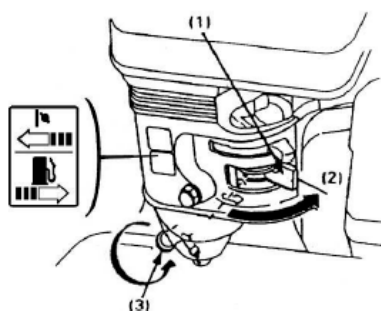
## 6. INSTRUCTIONS FOR USE

### 6.1. Start

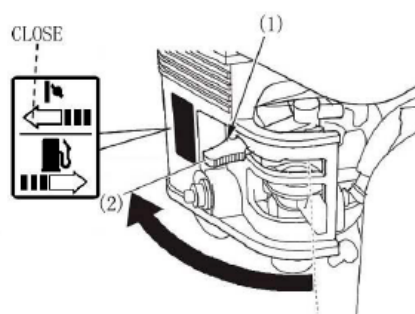
#### **⚠ Caution**

Make sure the clutch is disengaged and the shift lever is in NEUTRAL.

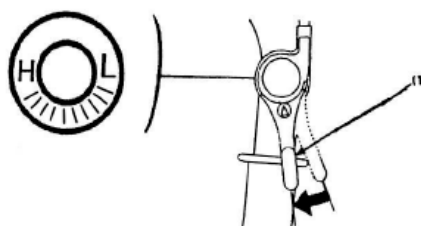
1. Turn on fuel valve



2. Close the choke



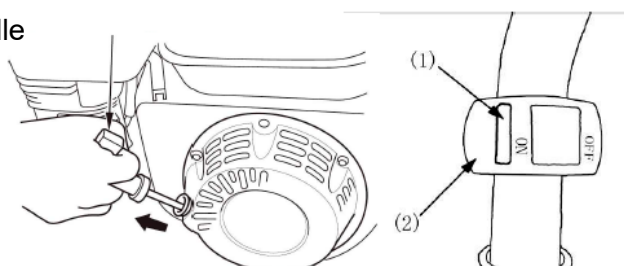
3. Turn the throttle control to the left. This engine valve is controlled by the throttle lever on the handlebar.



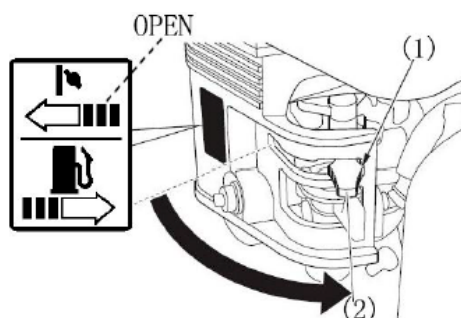
4. Pull the ignition strap several times. Once you feel resistance, then pull firmly on the entire strap.

Note: Do not release the strap suddenly; Gently guide it back into its housing.

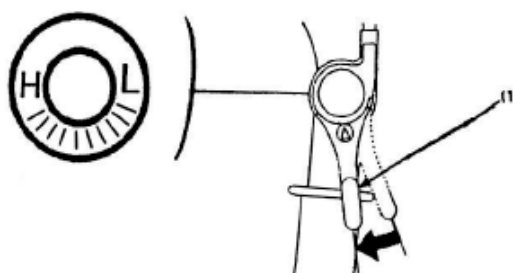
Starter handle



5. As the engine warms up, open the choke.



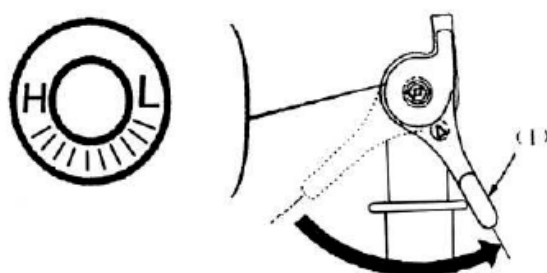
6. Adjust the rotation speed by throttle or throttle valve.



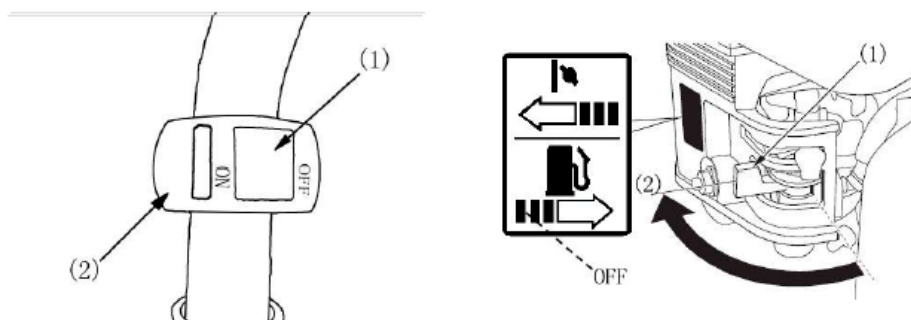
## 6.2. Stop

- In case of emergency, turn off the engine.
- To stop the engine, follow these steps:

1. Move the throttle control to the right.



2. Turn the engine OFF
3. Close the fuel valve (OFF).



## 7. MAINTENANCE

### 7.1. Engine maintenance

#### ⚠ Caution

- Turn off the engine before performing any maintenance operations.
- Avoid accidental ignition; Turn the ignition switch to the OFF position and disconnect the spark plug wire.
- The engine must be serviced at an authorized dealer unless the user has the necessary training and tools.

Only use original spare parts or their equivalent. The use of spare parts that are not of similar quality may damage the engine.

### 7.1.1. Maintenance program

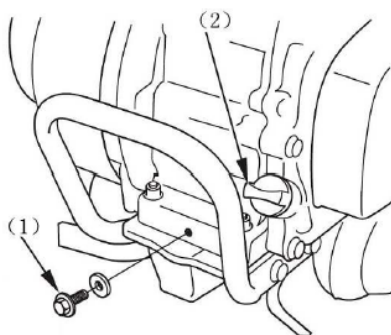
<b>MAINTENANCE PERIODS</b> Follow the periods indicated according to the most restrictive condition		Daily	First month or 20 hours	Every three months or 50 hours	Every six months or 100 hours	Every year or 300 hours
Component						
Engine oil	Check level	x				
	Change		x		x	
Air filter	Find out	x				
	Clean			x (1)		
Fuel filter cover	Clean				x	
Spark plug	Clean and reset				x	
Gearbox oil	Check level	x				
Tappet height	Check and reset					x (2)
Fuel tank and filter	Clean					x (2)
Clutch cable	Adjust		x		x	
Throttle cable	Adjust					x
Belt tension	Adjust		x		x	
Fuel hose	Find out	Every 2 years (2) Change if necessary				

Note:

- (1) Check more frequently if you have worked in very dusty areas.
- (2) These processes should be performed by a licensed professional unless the user has the necessary training and tools.

### 7.1.2. Oil change

- Drain the oil tank while the engine is still warm to ensure complete and rapid draining.
- Fill with the recommended oil and check the proper level.
- Oil tank capacity: 0.6 L



### 7.1.3. Air filter maintenance

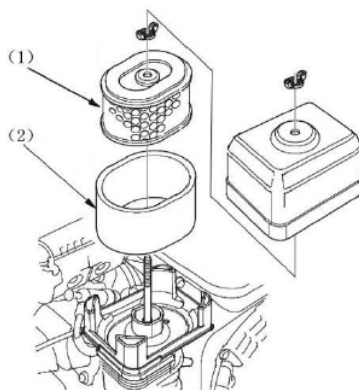
A dirty air filter would block air flow into the carburetor. To avoid carburetor failure, check the air filter regularly. Do this more often if you work in very dusty areas.

### **⚠ Caution**

Never use gasoline or low flash point solvents to clean the air filter. There is a risk of explosion.

Never start the engine without the air filter installed, otherwise immediate engine damage will occur.

- Remove the nut and air filter. Remove all components and separate them. Check that there are no cracks or breaks, in which case it should be replaced.
- Foam filter: Clean in soapy water, rinse and let dry, or clean with a high flash point solvent and let dry. Immerse the filter in clean engine oil and drain it. The engine will produce some smoke when starting if the foam has accumulated too much oil.
- Paper filter: Tap lightly against a hard surface to remove dirt or use an air compressor to clean the filter from the inside out. Do not use a brush as this will get dirt into the fibers.

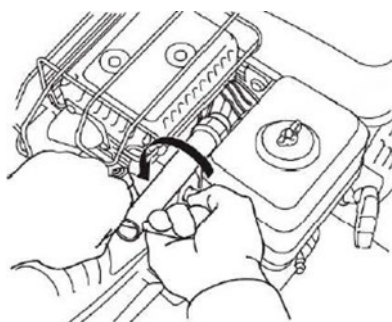


#### **7.1.4. Spark plug maintenance**

Recommended spark plug: F7TC

To ensure proper engine operation, the spark plug must be tight and free of dirt.

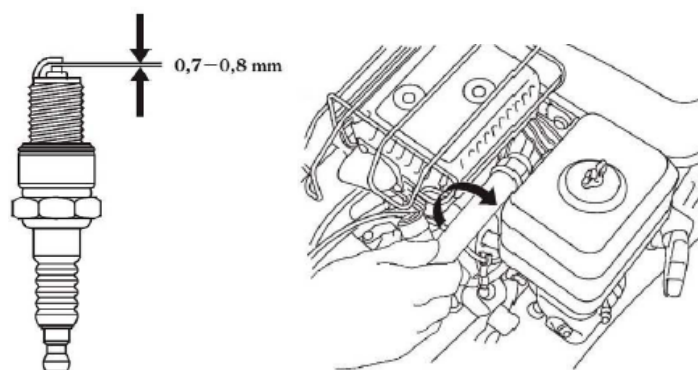
- Remove the spark plug cap.



### **⚠ Caution**

If the engine has been running, the muffler will be very hot. Use caution and do not touch the muffler.

- Visually inspect the spark plug. Remove it if the insulation has cracks or any other damage.
- Measure the spark plug gap with a caliper. The distance should be 0.7-0.8mm. Correct it if necessary by slightly bending the side electrode.
- Apply the spark plug nut and hand tighten it.



- When installing a new spark plug, use a wrench to turn the nut an extra half turn after it is hand-tightened. If replacing a used spark plug, only tighten an extra 1/8-1/4 with the wrench.

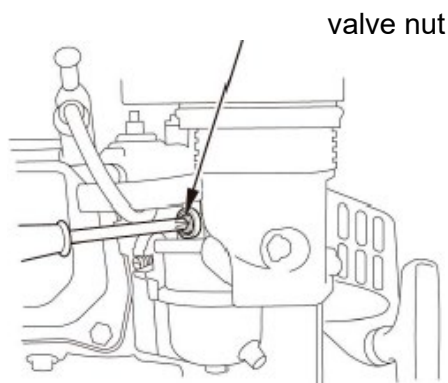
### **⚠ Caution**

The spark plug must be properly torqued. An improperly tightened spark plug can overheat and damage the engine. Never use a spark plug that is not rated for the correct temperature.

### **7.1.5. Carburetor speed adjustment**

- Start the engine and wait until it warms up.
- Once warm and in neutral, adjust the valve until you reach the proper idle speed.

The recommended idle speed is 1600 rpm (+/- 150).



### **7.1.6. Oil alarm**

*\*(Optional)*

This system is used to prevent damage when the oil level is not sufficient. If the oil level in the engine drops below the safe level, the alarm system will stop the engine automatically (the engine switch would still be in the ON position). If the engine has stopped, it will not start automatically.

## **7.2. Maintenance of the motor hoe**

Many of the components of the tiller wear out during use, when loading and moving the device. This wear can cause problems and reduce the performance of the device. To avoid these problems, a maintenance routine should be followed and thus prolong the useful life of the product.

### **7.2.1. Internal brake**

- The operation of the internal engine brake is explained in the manual.
- If the tiller is new, follow the following steps to break it in; use the tiller without load for one hour. Work for about five hours with a light load. Drain the engine oil and flush the engine with clean fuel. Let the engine idle for about 3-5 minutes. Add oil to the engine and brake for four hours. The tiller can then be used normally.

### **7.2.2. Daily maintenance (before and after work)**

- Check that all components are in good condition (watch for noise, overheating, and loose connections).
- Check that there are no oil leaks in the structure and in the engine.
- Check the oil levels in the engine and gearbox.
- Remove oil, dust and dirt from the exterior of the appliance.

### **7.2.3. Basic maintenance (every 150 hours)**

- Follow all steps of daily maintenance.
- Clean the casing and change the oil.
- Check the clutch, gearbox and reverse gear.

### **7.2.4. Expert maintenance (every 800h)**

- Follow all basic maintenance steps
- Check all axles and derailleurs and replace them if there is significant friction.
- Other components such as blades and various fasteners should be replaced if they are damaged.

### **7.2.5. Technical maintenance (every 1500-2000h)**

- Take the tiller to a specialized center for a check.
- Have an expert check the disc and clutch.



### 7.2.6. Maintenance program

MAINTENANCE PERIODS	Daily	First month or 20 hours	Every three months or 50 hours	Every six months or 100 hours	Every year or 300 hours
Component					
Oil Check and tighten nuts, screws and bolts	x				
Check and refuel oil	x				
Check and change oil		x	x	x	
Check oil leaks	x				
Clean dust, oil and dirt	x				
Solve problems	x				
Adjust moving parts	x				
Check and adjust the strap	x				
Check gearbox and axles				x	

### 7.3. Storage

If the tiller needs to be stored for a long period of time, follow these steps:

1. Clean the tiller of dust and dirt.
2. Drain the used oil and add clean oil to the engine.
3. Impregnate unprotected parts with an antioxidant treatment.
4. Store the tiller in a ventilated, dry and safe place.
5. Keep the accessories and this manual together with the appliance.

## 8. TROUBLESHOOTING

---

### 8.1. First checks

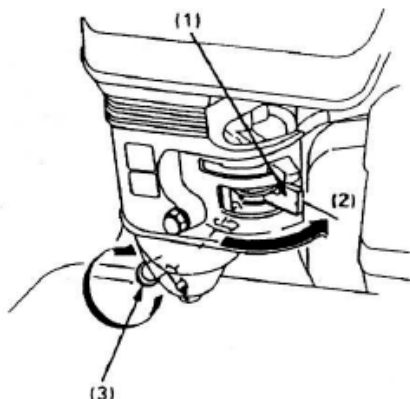
When the engine does not start

- Is there enough fuel?
- Is the fuel valve open?
- Is the engine ignition switch in the ON position?
- Has gasoline reached the carburetor?

To check, loosen the drain pin with the fuel valve in the ON position. If fuel flows, retighten the drain pin.

### **⚠ Caution**

If fuel has been spilled, make sure surfaces are dry before checking the spark plug or starting the engine. Fuel vapors or spills could catch fire.



(1) Fuel valve.

(2) ON

(3) Drain pin

- Does the spark plug spark?
  - Remove the spark plug cap. Clean any dirt from the base and then remove the spark plug.
  - Connect the spark plug to its cap.
  - Start the engine.
  - Remove the spark plug wire and ground it to a part of the engine. Pull the ignition wire to check for spark.
  - If there is no spark, replace the spark plug.
  - If the spark plug is working properly, try starting the engine according to the instructions.
  - If the motor still does not work, take the appliance to an authorized establishment for inspection.

## 8.2. Engine troubleshooting

The engine will not start	Cause	Solution
Check the position of the controls	Fuel valve in OFF position	Move valve to ON position
	Open primer (OPEN)	Turn choke OFF unless engine is warm
	Engine ignition switch in the OFF position	Place the engine ignition switch in the ON position
Check fuel	The engine has no gasoline	Refuel
	The engine has contaminated or old gasoline	Change the engine gasoline
Check the oil	A low oil level automatically stops the engine	Fill the tank with suitable oil

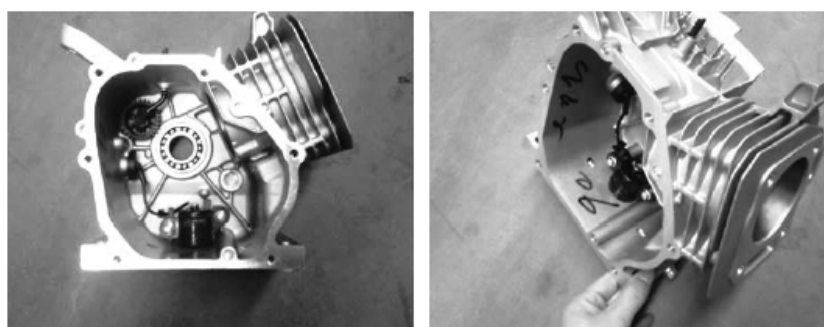
<b>Remove and inspect the spark plug</b>	The spark plug is dirty, does not work properly or is incorrectly calibrated	Clean, replace or calibrate the spark plug correctly
	The spark plug is wet with gasoline (flooded engine)	Dry and replace the spark plug. Start the engine with the throttle in the "FAST" position.
<b>Take the engine to an authorized establishment</b>	The fuel filter is clogged, the carburetor is not working correctly, there is a fault in the starting system, a valve is clogged, etc.	Replace or repair affected components as necessary

<b>The engine lacks power</b>	<b>Cause</b>	<b>Solution</b>
<b>Check the air filter</b>	Filter components	Clean or replace the filter
<b>Check fuel</b>	The engine is full of contaminated or old gasoline	change the gasoline
<b>Take the engine to an authorized dealer or consult the manual</b>	The fuel filter is clogged, the carburetor is not working correctly, there is a fault in the starting system, a valve is clogged, etc.	Replace or repair affected components as necessary

### 8.3. Machine problems

Oil alarm problems. When the tiller is running, it may stop suddenly due to various reasons; These may be caused by the oil alarm.

When the device drives straight or turns to the right (or leans to the right), it works correctly. On the other hand, when you turn left (or lean left), it can stop automatically. See Figures 1 and 2; The oil alarm is located at the base of the housing on the boot side. When the appliance turns clockwise, the oil covers the oil alarm and the engine runs properly. In the same way, when the device drives straight, it works perfectly. However, when the unit turns left (or tilts left), the oil moves to the left and the oil alarm on the right side overflows the oil level and the engine stops.



The oil alarm is designed to operate with a level engine (the working angle of the device with respect to the ground is usually less than 20°). If the motor has an inclination greater than 20°, then it will stop.

### 8.3.1. Possible solutions

- If your engine includes an oil alarm, you can cut the yellow wire between the oil alarm and the stop switch rope. The oil alarm will not operate and when the tiller turns left, the engine will continue to run.
- When placing a new order, we suggest that you order an appliance without an oil alarm. We have conducted engine studies on other rototillers and found that the machine operates without an oil alarm (see figure 3).



### 8.4. Other problems with the machine

1. After a prolonged period of use, the belt can loosen and lose traction, leading to clutch malfunction. The belt should be replaced when it loses tension.
2. If there is damage to the blade teeth, they should be replaced immediately to avoid injury.
3. Loose screws or bolts can cause problems. Pay attention to these parts that may come loose, such as the gear shift, belt cover, etc. Make sure these components are tight.
4. Some parts of the tiller can break easily after prolonged storage. The components that are susceptible to accidental breakage are listed below. The user is suggested to purchase these components from a store to prevent problems.

## 9. WARRANTY

---

If your product suffers from a manufacturing defect during the established warranty period, please contact or go to your point of sale directly with the necessary documentation.

Your purchase invoice should be kept as proof of the purchase date. Your tool must be returned to your dealer in acceptable, clean condition, in its original molded case, if applicable to the unit, accompanied by your applicable proof of purchase.

### 9.1. Warranty period

The legal warranty period of the product begins on the original date of purchase by the first initial buyer and its duration will be that established by the Royal Decree-Law on the protection of consumers and users against situations of social and economic vulnerability of the year. corresponding to the time of purchase of the product.

Some countries do not allow limitations on how long an implied warranty lasts or do not allow the exclusion or limitation of consequential or incidental damages, in which case the above limitation and exclusion may not apply to you. This warranty gives you specific legal rights, and you may also have other rights which vary from state to state or country to country.

## 9.2. Exclusions

This warranty does not cover product damage or performance problems caused by:

- Natural wear and tear.
- Misuse, neglect, careless operation or lack of maintenance.
- Defects caused by incorrect use, damage caused due to manipulations carried out by personnel not authorized by Anova or use of non-original spare parts.
- Defects of normal wear parts, such as bearings, brushes, cables, plugs or accessories such as drills, bits, saw blades, etc.
- Damage or defects resulting from abuse, accidents or alterations.
- Improper use and storage (explicit reference to the fact that the rules described in the operating instructions have not been followed).
- Customer-caused wear (e.g. broken saw blades, worn carbon brushes, etc.).
- Secondary wear and damage due to lack of maintenance, repair, lubricants (e.g. overheating damage due to blocked cooling slots, bearing damage as a result of dirt, frost damage, etc.)
- Damage as an obvious result of excessive use/overload.
- Damage caused by improper supplies (e.g. incorrect fuel)
- Load-induced failure of casing components or accessories due to abnormal stress
- Load-induced deformation of casing components or accessories due to abnormal stress.
- Damage resulting from the operation of supplies that overfill or leak due to improper storage, inappropriate cleaning agents or other damaging chemical components.
- Damage due to improper exposure to extreme temperatures (e.g., freeze fractures, thermal deformation of components, etc.)
- Damage from permanent exposure to ultraviolet radiation.
- Damage caused by inadequate maintenance.
- Any damage caused by failure to follow the instruction manual
- Any product that has attempted to be repaired by an unqualified professional.
- Any product connected to an inadequate power source (amps, voltage, frequency).
- Any damage caused by external influences (water, chemicals, physical, shock) or foreign substances.
- Use of unsuitable accessories or parts.
- It does not include defects in normal wear parts, nor does it cover damage or defects resulting from abuse, accidents or alterations, nor transportation costs.

Additionally, the warranty is void if the product has been altered or modified, or if the trademark/serial number on the machine has been defaced or removed.

Routine maintenance, tune-up, adjustments or normal wear and tear are not covered under this warranty.

This manual does not cover all possible situations regarding warranty exclusions, for more information contact your nearest Anova dealer.

### 9.3. In case of incident

The guarantee must be correctly completed with all the requested information, and accompanied by the purchase invoice.

Anova reserves the right to reject any claim where the purchase cannot be verified or where it is clear that the product was not maintained properly (maintenance, clean ventilation slots, lubrication, carbon brushes regularly maintained, cleaning, storage, etc.) .

Private use means personal domestic use by an end consumer. Instead, commercial use means all other uses, including uses for commercial, income-generating or rental purposes. Once the product has been used for commercial use, it will be considered a commercial product for the purposes of this warranty.

These are our standard warranty terms, but occasionally there may be additional warranty coverage not determined at the time of publication. For more information, contact your nearest official Anova distributor or visit [www.millasur.com](http://www.millasur.com).

Warranty service is only available through official Anova dealers. You can locate your nearest distributor on our distributor map at [www.anova.es](http://www.anova.es).

## 10. ENVIRONMENT

---



Protect the environment. Recycle the oil used by this machine by taking it to a recycling center. Do not pour used oil into drains, land, rivers, lakes or seas.

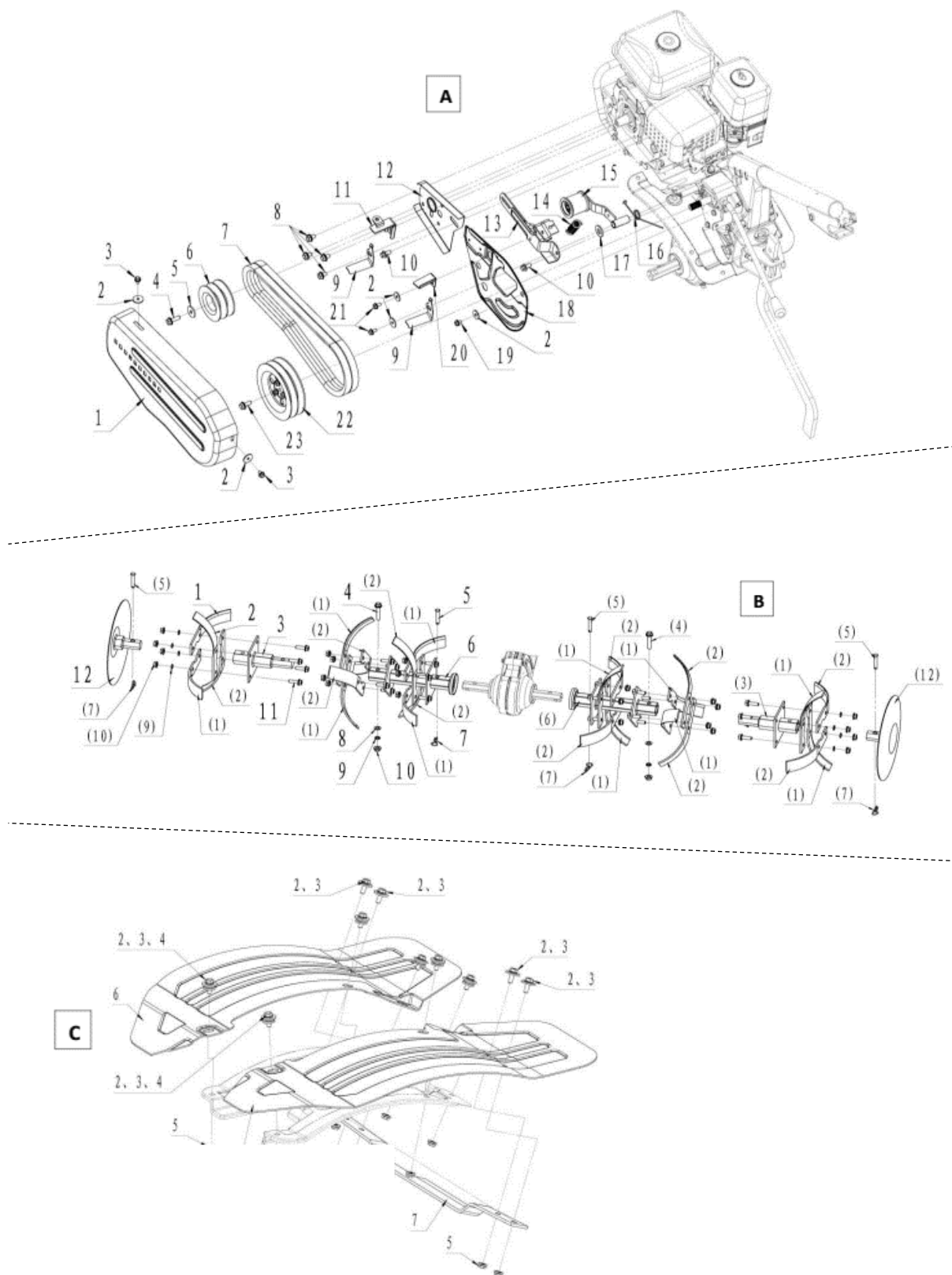


Dispose of your machine in an environmentally friendly way. We should not dispose of machines with household waste. Its plastic and metal components can be classified according to their nature and recycled.

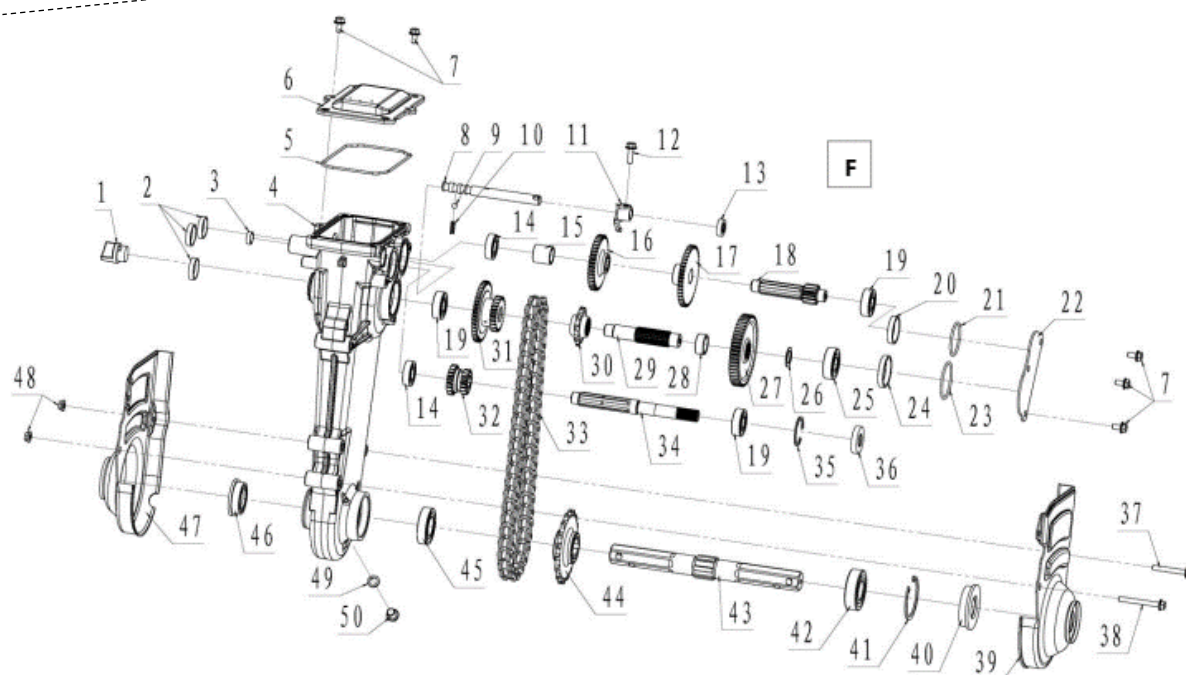
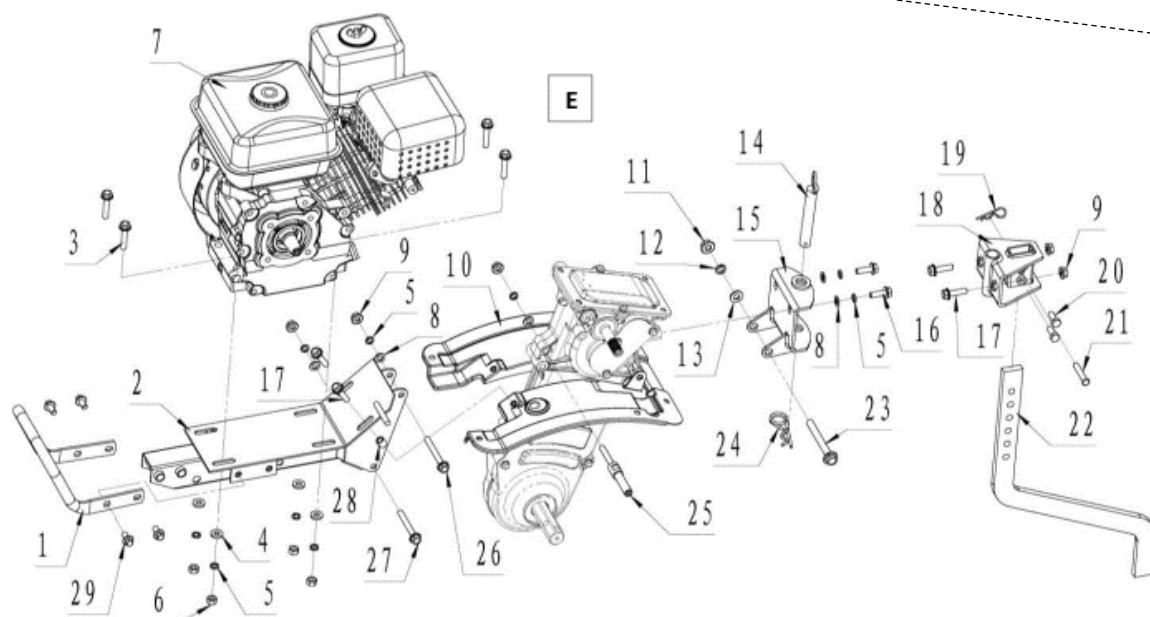
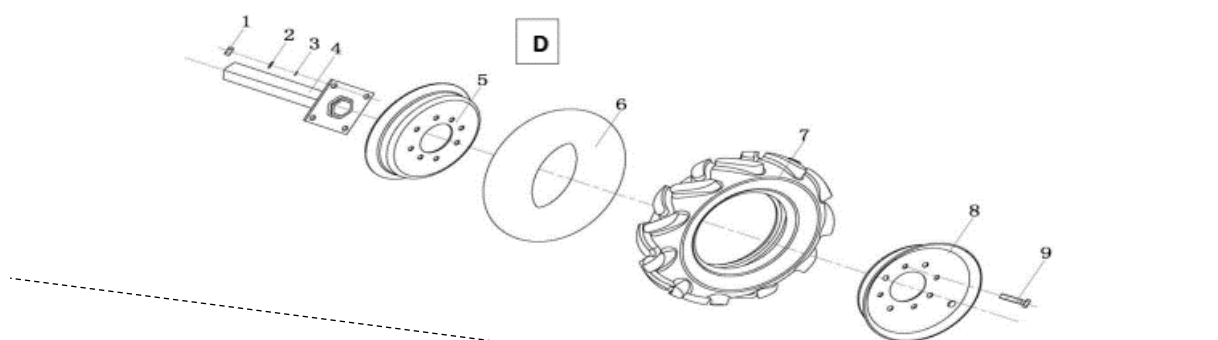
The materials used to package this machine are recyclable. Please do not throw the packaging into household waste. Dispose of these packaging at an official waste collection point.

## 11. EXPLODED VIEW

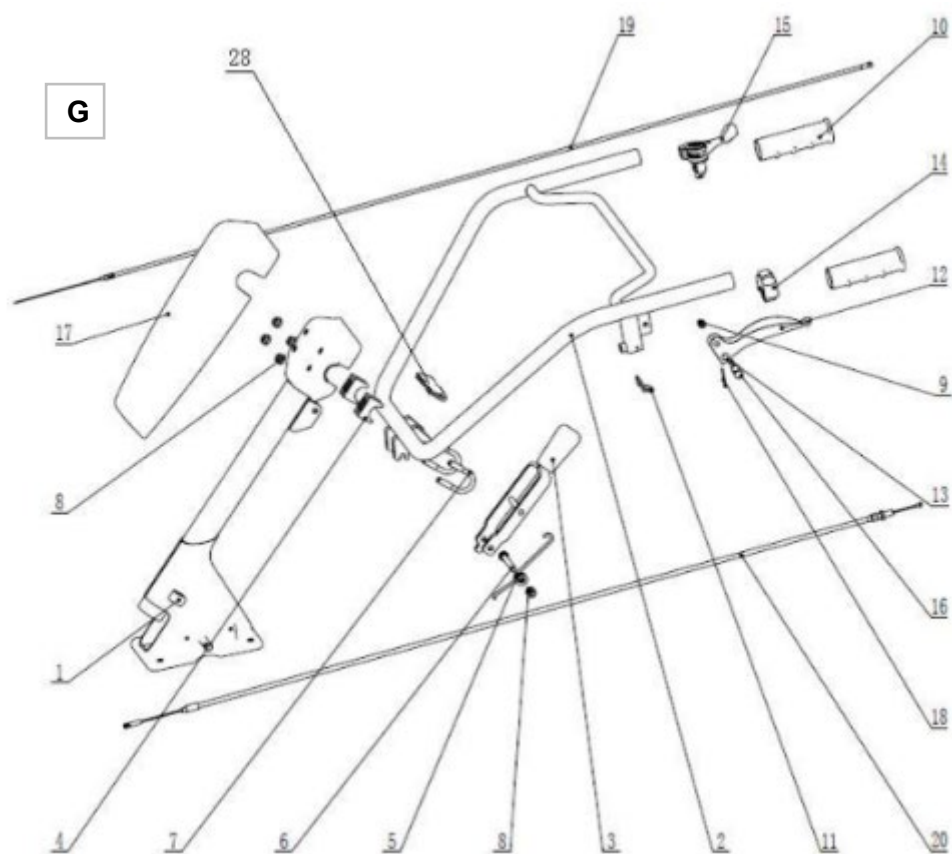
## MC507











## 12. CE CERTIFICATE

### DISTRIBUTION COMPANY

MILLASUR, SL

RUA EDUARDO PONDAL, Nº 23 PISIGÜEIRO

15688 OROSO - A CORUÑA

SPAIN



## EC DECLARATION OF CONFORMITY

In compliance with the different CE directives, it is hereby confirmed that, due to its design and construction, and according to the CE mark printed by the manufacturer on it, the machine identified in this document complies with the relevant and fundamental health and safety requirements. of the aforementioned EC directives. This declaration validates the product to display the CE symbol.

In the event that the machine is modified and this modification is not approved by the manufacturer and communicated to the distributor, this declaration will lose its value and validity.

Machine name: **MOTOR HOE**

Model: **MC507**

Recognized and approved standard to which it complies:

**Directive 2006/42/EC**

Tested in accordance with regulations:

**EN ISO 709/42/EC**

Company seal

**MILLASUR, S.L.U.**  
Rúa Eduardo Pondal, 23 - Pol. Emp. Sigüeiro  
15688-Oroso-A Coruña  
Tel. (+34) 981 69 64 65 - Fax (+34) 981 69 08 61  
e-mail: millasur@millasur.com  
CIF: B-15 749 922

07/09/2017