

Motor hoe

MC360B

ANOVA

Instructions and user manual



EN

Millasur SLU
Rúa Eduardo Pondal, nº 23 - Pol. Ind. Sigüeiro
15688 – Oroso, A Coruña - 981 696 465 - www.millasur.com





Anova wishes to congratulate you on choosing one of our products and guarantees you the assistance and cooperation that has always distinguished our brand over time.

This machine is designed to last for many years and be very useful if used according to the instructions in the user manual. We therefore recommend that you read this instruction manual carefully and follow all our recommendations.

For more information or questions, you can contact us through our web support services such as www.anova.es

INFORMATION ABOUT THIS MANUAL

Pay attention to the information provided in this manual and on the appliance for your safety and that of others.

- This manual contains instructions for use and maintenance.
- Take this manual with you when working with the machine.
- The contents are correct at the time of printing.
- We reserve the right to make changes at any time without affecting our legal responsibilities.
- This manual is considered an integral part of the product and must remain with it in the event of loan or resale.
- Ask your dealer for a new manual in case of loss or damage.

READ THIS MANUAL CAREFULLY BEFORE USING THE MACHINE



To ensure your machine provides the best results, please read the operating and safety instructions carefully before using it.

OTHER WARNINGS:

Incorrect use could cause damage to the machine or other objects.

Adapting the machine to new technical requirements could cause differences between the content of this manual and the purchased product.

Read and follow all instructions in this manual. Failure to follow these instructions could result in serious personal injury.

INDEX

1. SAFETY INSTRUCTIONS
2. PRODUCT DESCRIPTION
3. TECHNICAL SPECIFICATIONS
4. OPERATING INSTRUCTIONS
5. MAINTENANCE
6. WARRANTY
7. ENVIRONMENT
8. EXPLODED VIEW
9. CE CERTIFICATE

1. SAFETY INSTRUCTIONS

1.1. General safety instructions

Before using this equipment, it is important to familiarize yourself with basic safety precautions to avoid any risk of fire, electrocution, and injury. Take the time to read all instructions in this guide and fully understand the application, limitations, and hazards associated with this tool.

Pay attention to the information provided in this manual and on the appliance for your safety and that of others.

Important

Because we regularly improve our products, you may find slight differences between your machine and the descriptions contained in this manual. Modifications to the machine are subject to change without prior notice and without obligation to update the manual, although essential safety and operating characteristics will remain unchanged. Furthermore, due to technical product updates, this document is subject to change without prior notice.

1.2. Safety instructions

Attention

When using gasoline engines like this one, basic safety rules must be followed to reduce the risk of accidents and/or damage to the machine. Read all instructions before using the device again in the future.

- Read these instructions carefully.
- Never allow children, pets, or people unfamiliar with these instructions to use the machine.
- Never operate the machine near children or animals.
- Please note that the machine operator is responsible for any accidents that may occur to third parties and/or their property.
- The machine should only be used by a capable person who is qualified to operate the machine.
- Always wear appropriate footwear (safety shoes) and long pants when using this tool.
- Do not operate the machine with bare feet or sandals.
- Carefully inspect the area where the equipment will be used and remove any objects that could be thrown by the machine.
- Do not touch the engine or exhaust pipe when it is hot, as you may get burned.
- Gasoline is extremely flammable:
 - o Store fuel only in containers designed and approved for this purpose.
 - o Refuel the machine only when outdoors and never smoke when refueling the equipment.
 - o Add fuel before starting the engine. Never remove the fuel tank cap or add/handle gasoline while the engine is running or when the engine is hot.
 - o If gasoline is spilled, do not attempt to start the engine; move the machine away from the spilled area and do not turn on the machine to avoid sparks until the gasoline evaporates.
- Replacing the exhaust if it is in poor condition.
- Before each use, always check to ensure that the tools and/or their components are not worn or damaged. When replacing a worn or damaged component or bolt, replace all similar components.
- Always make sure the machine is balanced.

- Walk, never run when using the machine.
- Work diagonally, never up and down.
- Use on slopes:
 - o When using on slopes, keep the gasoline below half the fuel tank to prevent spillage.
 - o When using on a slope, be very careful when changing direction, as an accident could occur due to the product tilting.
 - o Use extreme caution on slopes greater than 10°. Avoid using the product in these conditions.
- When starting the engine, follow the instructions carefully and keep your feet away from sharp components.
- Do not put hands or feet near or on rotating parts.
- Never lift or carry the machine while the engine is running.
- Turn off the engine:
 - o Every time you are not using the machine.
 - o Before refilling with gasoline.
 - o When performing maintenance and cleaning operations.
 - o If you need to make any adjustments, no matter how small.
 - o When using any tractive force other than the engine to move the machine.
- Reduce the starter motor speed when the machine is shut down.
- Always place your hands on the handlebars when using the machine. Do not hold the machine by any other parts while in use.
- Keep all nuts, bolts, and screws properly tightened to ensure the equipment is in optimal safety condition.
- Never store the machine with gasoline in the tank inside a building where vapors could reach a flame or spark.
- Allow the engine to cool before storing it in any enclosed space.
- To reduce the risk of fire, keep the machine storage area, exhaust pipe, and gasoline area free of any vegetation or excess lubricant.
- Replace worn or damaged parts as a safety measure.
- If the fuel tank must be drained, do so outdoors. Handle fuel in an environmentally safe manner.
- To reduce the effects of machine vibrations, wear protective gloves when using the machine.
- Be sure to take breaks to prevent injury.
- The tiller must be used in a suitable environment, as it may be damaged if used in adverse conditions.
- Know how to stop it in an emergency. Understand and master the use of all operating facilities.
- When closing the clutch, hold the handle, otherwise it may move forward suddenly and cause an accident.
- Keep clothing away from moving parts during operation to avoid injury. Dress appropriately and wear the appropriate PPE for the operation.
- Do not operate the tiller if you are unwell or under the influence of medication that may affect your concentration, as this could cause serious injury.

1.3. Safety symbols



Meets appropriate safety standards.



Read the instruction manual before use.



Caution! Rotating Blades



Wear appropriate clothing as debris may be thrown from under the machine.



Keep people and animals away from the machine when it is in operation.



Always wear safety glasses.



Protection against ear wear.



Do not wear loose clothing, ties, or jewelry (rings, wristwatches) while operating this machine. They can be caught in moving parts. We recommend the use of non-conductive protective gloves and safety shoes.



Cover your hair if it's long. Otherwise, it could easily get caught in parts of your power helm.



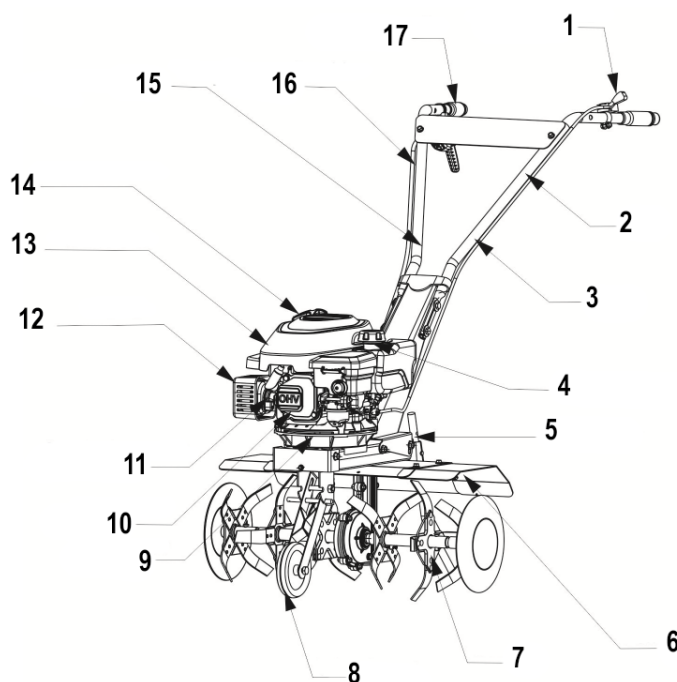
Wear safety footwear.



Caution: hot surface - do not touch

2. PRODUCT DESCRIPTION

2.1. Identification of machine components



1. Clutch lever
2. Left side handlebar
3. Clutch cable
4. Fuel tank cap
5. Depth rod
6. Mudguards
7. Cultivator milling machine
8. Wheel
9. Side disc
10. Air filter
11. Spark plug cap
12. Escape
13. Engine
14. Starter pull
15. Right side handlebar
16. Throttle cable
17. Choke lever

3. TECHNICAL SPECIFICATIONS

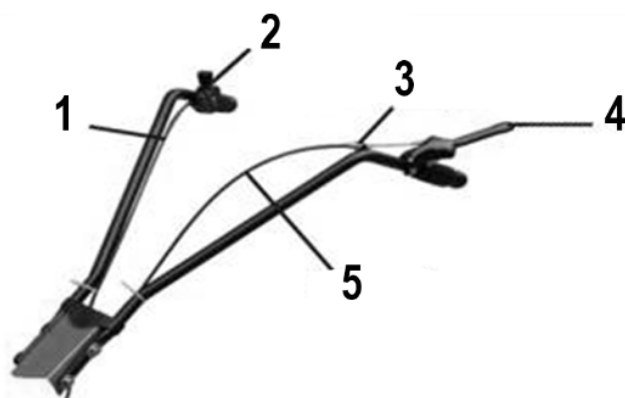
Characteristics	
Engine	
Engine type	Single cylinder - 4T
Power	2.6 kW /3100 (r/min)
Cylinder capacity	150 cc
Bore × stroke	65×45 (mm)
Fuel consumption	395 (g/kw·h)
Cooling method	Air-cooled
Ignition system	Electrical coil (TCI)
Recommended engine oil type	SAE30
Output type	Vertical
Dimensions (length x width x height)	330 mm × 308 mm × 245 mm
Net weight	10 kg
Machine	
Starting system	Manual start
Diameter of the cultivator cutter	260 mm
Marches	1
Dimensions (length x width x height)	1300×530×1010 mm
Working width	450-500 mm
Working depth	100-150 mm
Net weight	26 kg

Note: Due to technical product updates and R&D improvements, this document is subject to change without notice.

4. OPERATING INSTRUCTIONS

4.1. Handlebar placement

Take out the main body and detachable parts, then assemble the handlebar, clutch lever, clutch lever, clutch cable and throttle cable to the main body.



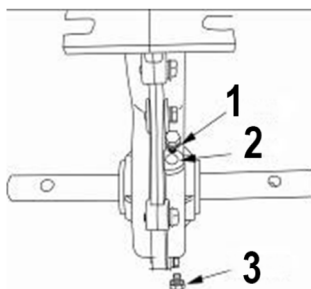
1. Throttle cable
2. Choke lever
3. Clutch adjusting bolt
4. Clutch lever
5. Clutch cable

▲ Warning

1. Avoid operator injury and machine damage caused by the plow falling when positioning it; tighten all bolts to ensure the plow operates properly.
2. The accelerometer cable and clutch cable should operate smoothly.

4.2. Adjusting the depth rod

Note: Fix the depth rod with a clip according to actual needs.



- 1. Input screw
- 2. Oil inlet
- 3. Output screw

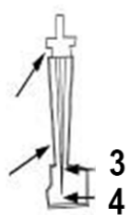
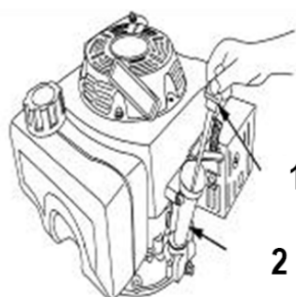
4.3. Preparation before start-up

- Install the handlebars, clutch cables, throttle cables, and other spare parts; then check and adjust the cables for proper position. Keep the clutch operating steadily to prevent looseness or tightness.
- Add fuel.
- Please note that there is no oil in the gearbox; add approximately 120 ml of suitable oil before operation; contact your dealer if you have any questions.
Also, if you perform maintenance and repairs on the gearbox, add appropriate oil and then tighten the gearbox input bolt to prevent any leakage while the product is in operation. Do not perform any work if you have the slightest doubt; contact your authorized dealer.

4.4. Pre-commissioning inspection

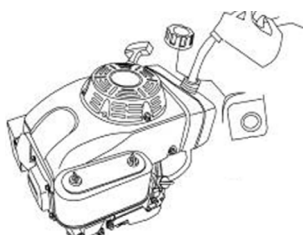
4.4.1. Checking the oil

Before starting, place the tiller on level ground. Remove the dipstick and add the appropriate oil. Keep the level between the "upper" and "lower" marks on the dipstick. Note: Keep the level below the "upper" mark.



- 1. Dipstick
- 2. Dipstick holder
- 3. Top
- 4. Bottom

4.4.2. Checking the fuel

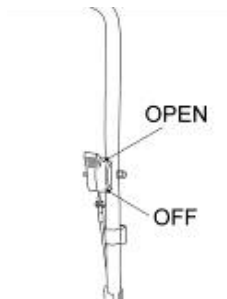


Never use a mixture of oil and gasoline. Avoid getting dirt or water into the fuel tank. Remember to add gasoline in a well-ventilated area after stopping the product.

4.5. Starting the engine

4.5.1. Lighting instructions

- Turn the throttle lever to the "OFF" position when the engine is cold and, at the same time, pull the starter lever to start the engine.



- Turn the throttle lever to the "OPEN" position when the engine is warm and pull the starter handle to start the engine.
- Slowly pull the starter handle until you feel a slight resistance. Then pull quickly to start the engine.

Note: Release the handle slowly by hand, but do not release it suddenly.

- After starting the engine, gradually move the throttle lever to "OPEN".

Note: Do not set the throttle lever to "OFF" when the product is in operation.

4.5.2. The engine is soaked with fuel

The engine may be soaked with fuel if the operator cannot start it after pulling the starter cord several times. The solution is as follows:

1. Push the air control to the "OPEN" position and set the carburetor fuel switch to the "OFF" position.
2. Remove the spark plug and dry it. When reinstalling the spark plug, tighten it firmly, first by hand and then with a spark plug wrench, turning it 1/4 turn.
3. Push the air control to the "OFF" position, open the fuel valve and repeat the starting process.

4.6. Adjust the working depth

1. Turn off the engine.
2. Remove the clip from the depth rod, then adjust the cultivation depth according to the corresponding installation holes and the following parameter table.

Grill position depth	1	2	3
Cultivation depth (mm)	100	150	200

3. The user can choose the cultivation depth by himself.
4. Install the depth rod clip strictly following the operating instructions after choosing the cultivation depth.

5. MAINTENANCE

Caution

- Turn off the engine before performing any maintenance.
- Avoid accidental ignition.
- The engine must be repaired by an authorized dealer.

Only use accessories and spare parts recommended by the manufacturer. Do not attempt to repair the product yourself; entrust repairs to an authorized specialist.

To keep the product in good condition, the user must perform maintenance according to the following table:

Items \ Frequency		For each use	First month / 20 hours of use	Every season / 50 hours of use	Every month / 100 hours of use	Every year / 300 hours of use
Gearbox oil	Replace		△			
Engine oil Air filter	Check	△				
	Replace			△		
Cultivator milling machine Spark plug	Check	△				
	Replace			△ (1)		
Choke cable	Replace/Clean	△				
Steel cable for gear shift rod Idle speed	Replace/Clean				△	
	Replace					△
Fuel tank and fuel filter	Replace/Adjust			△		
Fuel pipe	Replace/Adjust					△ (2)
Gearbox oil	Replace/Adjust				△ (2)	
Engine oil	Replace/Clean					△
Air filter	Replace	Every two years (replace sooner if necessary)				

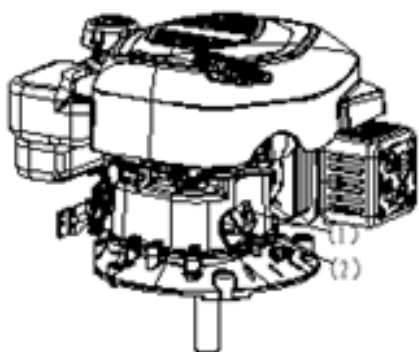
Nota:

△ (1) → Shown only for core replacement.

△ (2) → This item must be performed by your dealer. If you have any questions about any maintenance task, contact your dealer before performing any work.

5.1. Changing the engine oil

Before the engine cools down, the oil drains easily and completely.



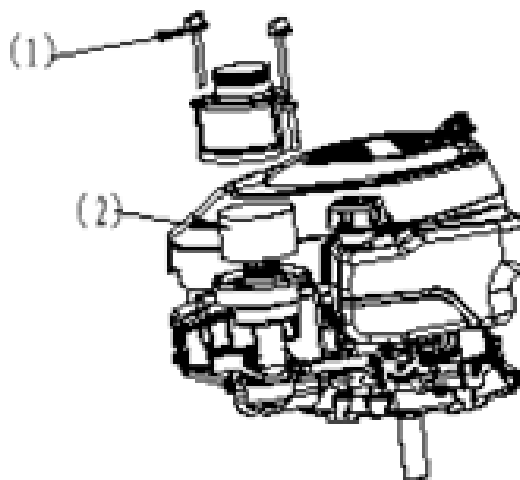
1. Clean the oil filter and remove the dipstick (1).
2. Place the container underneath (2) to collect the used engine oil that is drained.
3. Add the recommended oil to the standard level, check the oil level with the dipstick (see check before starting).
4. Remember to clean all components related to this maintenance task.

5.2. Cleaning the air filter

To prevent the air filter from becoming damaged or dirt and impurities from entering the engine, it must be cleaned or replaced in a timely manner (as shown in the image).

1. Remove the bolt (1) and the air filter cover, preventing dirt and impurities from entering the air filter base.
2. Remove the paper filter core (2).
3. Check, clean, or remove the filter part.

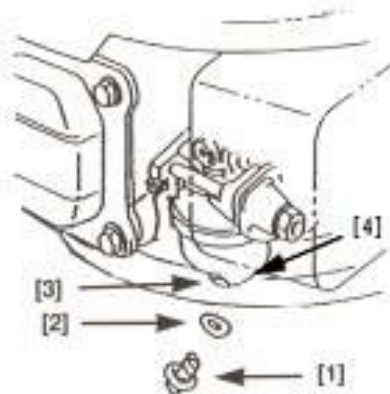
Note: Clean the paper filter core with compressed air or by rubbing it gently; do not use a brush.



5.3. Other maintenance and inspections

- Check whether the cultivator milling machine is loose.
- If the clutch still does not work properly despite adjusting the clutch bolt, it is best to replace the belt.
- Drain the fuel:
 - o Remove the washer (2) from the drain bolt (1) on the carburetor; drain the fuel from the carburetor.

Next, reinstall the oil drain bolt.



- Drain the engine oil:
 - Drain the engine oil, remove the spark plug, and pour 5 to 10 ml of clean engine oil into the cylinder. Pull the piston with the starter cable so that the engine oil is evenly distributed inside the cylinder, then reinstall the spark plug.
 - Keep the product in a horizontal position in a dry, ventilated space. Keep it away from electrical machines or sources of fire to prevent fires.
 - Cover it with a dust cover if you plan to store it for a long time; do not cover it with a plastic cover, as moisture can cause rust.

5.4. Transport and storage

If you need to store the tiller for a long period of time, follow these steps:

1. Clean the tiller of dust and dirt.
2. Drain the used oil and add clean oil to the engine.
3. Coat the unprotected parts with an antioxidant treatment.
4. Store the tiller in a ventilated, dry and safe place.
5. Keep the accessories and this manual together with the product.
6. Turn the fuel switch to "off" during transport.
7. If you are not going to use the product for a long period, be sure to store it properly.

Note: Do not tilt the engine to avoid fuel spills or fires.

6. WARRANTY

If your product experiences a manufacturing defect during the established warranty period, please contact or go to your point of sale directly with the necessary documentation.

Your purchase invoice must be kept as proof of the purchase date. Your tool must be returned to your dealer in acceptable, clean condition, in its original molded case, if applicable, accompanied by your corresponding proof of purchase.

6.1. Warranty period

The legal warranty period for the product begins on the original date of purchase by the initial purchaser and will last as long as established by the Royal Decree-Law on the protection of consumers and users against situations of social and economic vulnerability for the year corresponding to the time of purchase of the product.

Some countries do not allow limitations on how long an implied warranty lasts or do not allow the exclusion or limitation of consequential or incidental damages, so the above limitation and exclusion may not apply to you. This warranty gives you specific legal rights, and you may also have other rights that vary from state to state or country to country.

6.2. Exclusions

This warranty does not cover damage to the product or performance problems caused by:

- Natural wear and tear due to use.
- Misuse, negligence, careless operation or lack of maintenance.
- Defects caused by improper use, damage caused by manipulation carried out by personnel not authorized by Anova, or use of non-original spare parts.
- Defects in normal wear parts, such as bearings, brushes, cables, plugs, or accessories such as drills, bits, saw blades, etc.
- Damage or defects resulting from abuse, accidents or alterations.
- Incorrect use and storage (explicit reference that the rules described in the operating instructions have not been followed).
- Wear caused by the customer (e.g. broken saw blades, consumed carbon brushes, etc.).
- Wear and secondary damage due to lack of maintenance, repair, lubricants (e.g., overheating damage due to blocked cooling slots, bearing damage due to dirt, frost damage, etc.)
- Damage as an obvious result of overuse/overload.
- Damage caused by inappropriate supplies (e.g., incorrect fuel)
- Load-induced fracture of housing components or accessories due to abnormal stress
- Load-induced deformation of housing components or accessories due to abnormal stress.
- Damage resulting from the operation of supplies that are overfilled or leak due to improper storage, inappropriate cleaning agents, or other damaging chemical components.
- Damage due to improper exposure to extreme temperatures (e.g., frost fractures, thermal deformation of components, etc.)
- Damage from permanent exposure to ultraviolet radiation.
- Damage caused by inadequate maintenance.
- Any damage caused by non-compliance with the instruction manual
- Any product that has been attempted to be repaired by an unqualified professional.

- Any product connected to an improper power source (amps, voltage, frequency).
- Any damage caused by external influences (water, chemicals, physical, impacts) or foreign substances.
- Use of unsuitable accessories or parts.
- It does not include defects due to normal wear and tear, nor does it cover damage or defects resulting from abuse, accidents or alterations, nor transportation costs.

The warranty is also void if the product has been altered or modified, or if the machine's trademark/serial number has been defaced or removed.

Routine maintenance, tune-ups, adjustments, or normal wear and tear are not covered under this warranty.

This manual does not cover all possible warranty exclusions; for more information, please contact your nearest Anova dealer.

6.3. In case of incident

The warranty must be properly completed with all the requested information and accompanied by the purchase invoice.

Anova reserves the right to reject any claim where the purchase cannot be verified or where it is clear that the product was not properly maintained (maintenance, clean ventilation slots, lubrication, carbon brushes regularly serviced, cleaning, storage, etc.).

Private use is defined as personal domestic use by an end consumer. Commercial use, on the other hand, refers to all other uses, including uses for business, income-generating, or rental purposes. Once a product has been used for commercial purposes, it will henceforth be considered a commercial product for the purposes of this warranty.

These are our standard warranty terms, but occasionally there may be additional warranty coverage not specified at the time of publication. For more information, please contact your nearest authorized Anova dealer or visit www.millasur.com.

Warranty service is only available through official Anova dealers. You can find your nearest dealer on our dealer map at www.anova.es.

7. ENVIRONMENT



It's essential to ensure that products and their components are disposed of responsibly to protect the environment. Below, you can find general guidelines for the proper disposal of various materials used in your machine.

Dispose of your machine in an environmentally friendly manner. Machines should not be disposed of with household waste. Their plastic and metal components can be sorted according to their nature and recycled.

When disposing of machinery or metal products, keep in mind that their metal components, such as iron, steel, or aluminum, must be properly recycled in metal recycling facilities. This will contribute to the possibility of reusing them in the manufacture of new products.

Oils and Fuels

Used oils and fuels, among other things, must be properly recycled. Do not pour these liquids into drains, soil, rivers, lakes, or seas, as they can cause serious environmental damage. Direct them to a recycling center or specialized collection point. This process helps prevent water and soil contamination and, if possible, allows the oils to be reused safely.

Plastics

Plastics should be separated and taken to specific recycling points. Do not dispose of them with general household waste. Plastics can be recycled, contributing to waste reduction.

Cardboard

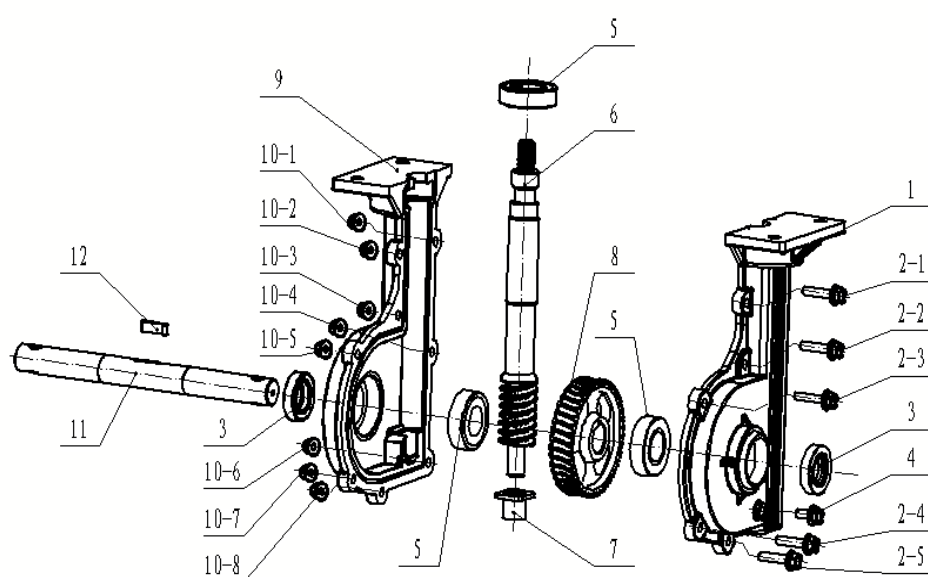
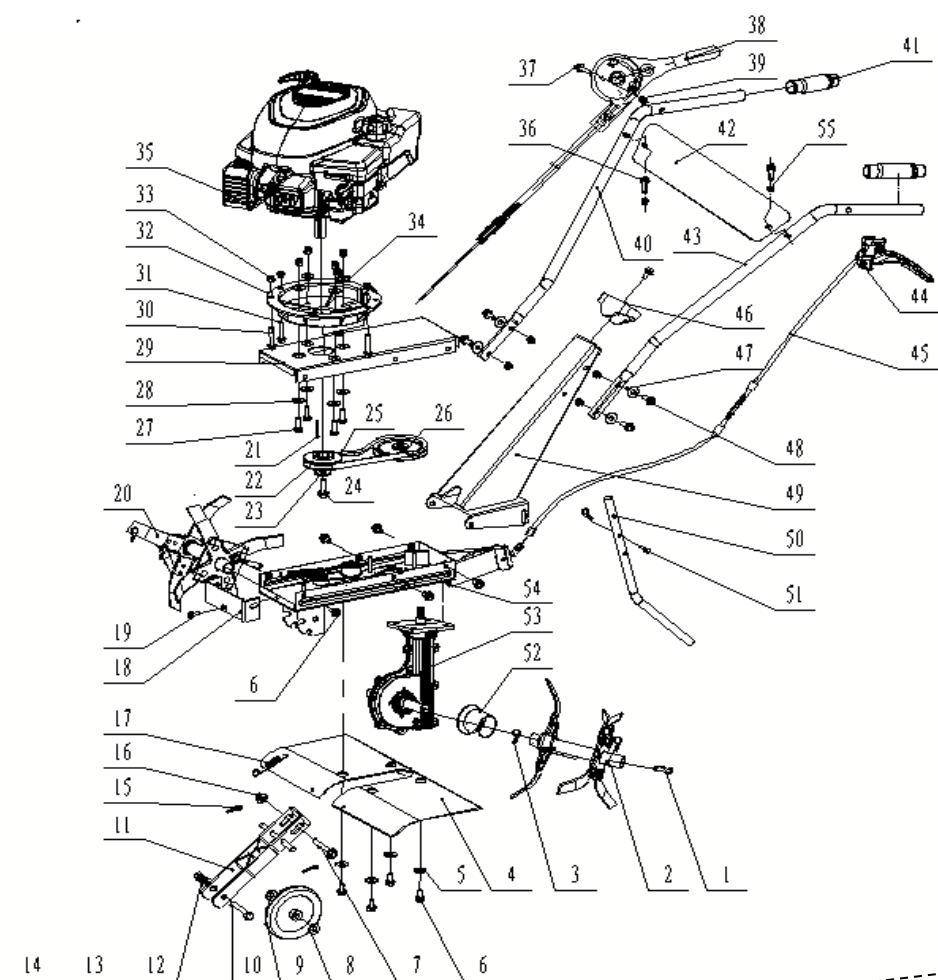
Packaging materials, such as cardboard, are recyclable. Be sure to separate clean, dry cardboard and place it in designated recycling containers or at an official waste collection point. Do not dispose of it with household waste.

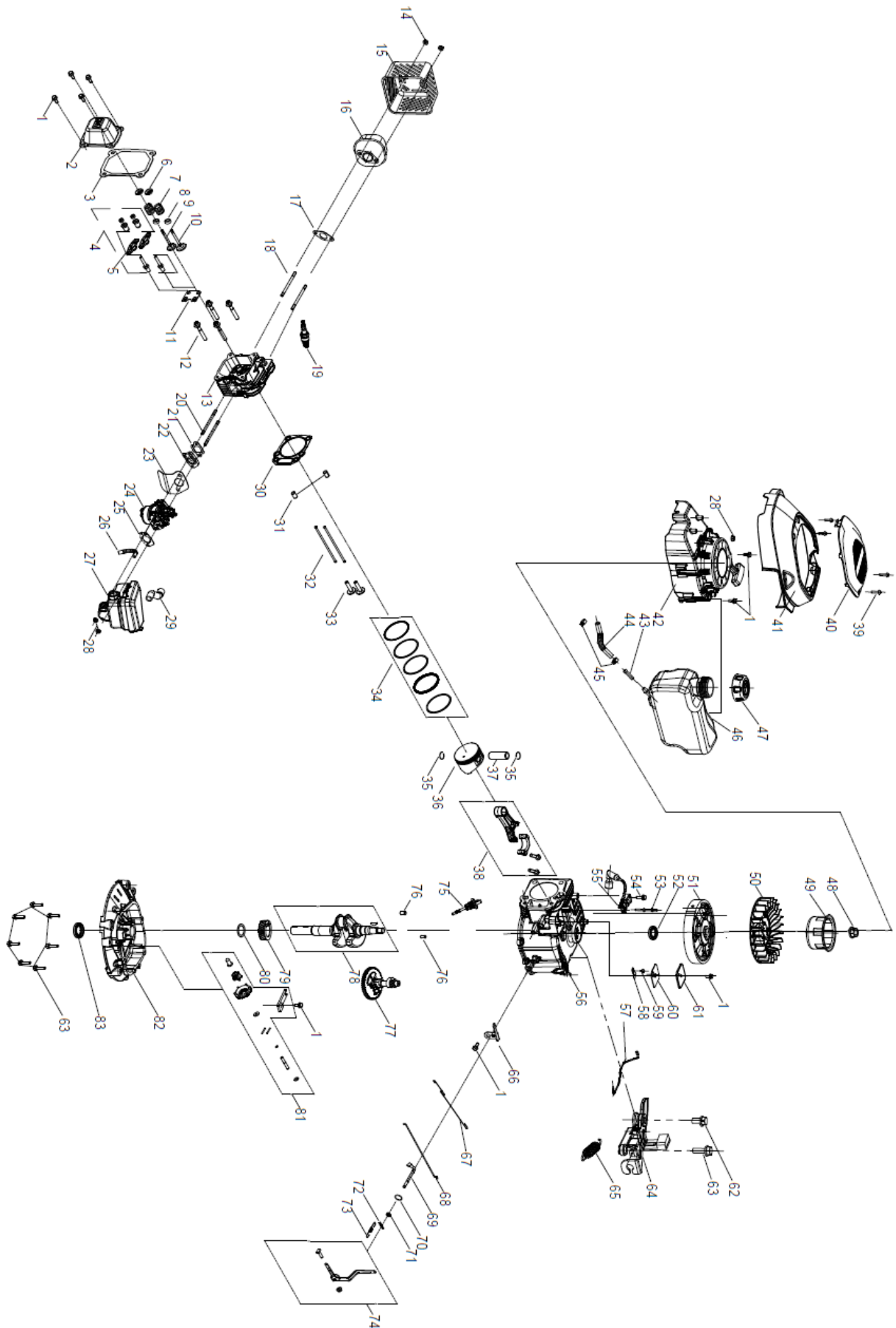
Batteries

Batteries, accumulators, and other electronic components from the machines must be disposed of at designated collection points to prevent the release of toxic substances into the environment. Do not dispose of them with regular trash. Take them to appropriate recycling centers for safe and responsible handling.

By following these guidelines, you are contributing to environmental protection and resource conservation. For more information on disposal and recycling, please contact your local authorities for further information.

8. EXPLODED VIEW





9. CE CERTIFICATE

DISTRIBUTION COMPANY

MILLASUR, SL

RUA EDUARDO PONDAL, Nº 23 PISIGÜEIRO

15688 OROSO - A CORUÑA

SPAIN



EC DECLARATION OF CONFORMITY

In compliance with the various EC directives, it is hereby confirmed that, due to its design and construction, and according to the CE mark printed on it by the manufacturer, the machine identified in this document complies with the relevant and fundamental health and safety requirements of the aforementioned EC directives. This declaration qualifies the product for displaying the CE symbol.

If the machine is modified and this modification is not approved by the manufacturer and communicated to the distributor, this declaration will lose its value and validity.

Machine name: MOTOR TILLER

Model: **MC360B**

[SR1Z-45A]

Recognized and approved standard to which the following are adapted:

Directive 2006/42/EC
2014/30/EU
2016/1628/EU
2000/14/EC amended in 2005/88/EC

Tested according to regulations:

EN ISO 14982:2009
EN ISO 3744:1995; ISO 11094:1991
EN 709:1997+A4:2009; EN 709:1997+A4/AC

Company seal

MILLASUR, S.L.U.
 Rua Eduardo Pondal, 23 - Pol. Emp. Sigüeiro
 15688-Oroso-A Coruña
 Tel. (+34) 981 69 64 65 - Fax (+34) 981 69 08 61
 e-mail: millasur@millasur.com
 CIF: B-15 749 922

07/28/2025