

ELWL2038

EMTOP
— Making Difference —

Instructions and user manual



— Making Difference —

EN



CE

Index

1. SECURITY INSTRUCTIONS
2. TECHNICAL SPECIFICATIONS
3. FUNCTIONING
4. MAINTENANCE AND CLEANING
5. ENVIRONMENT

1. SECURITY INSTRUCTIONS

Caution

Please read the operating instructions carefully and observe the notes provided. Keep the instructions for future reference.



Use the instructions to familiarize yourself with the product, its proper use and safety notes. Safe working with this machine is only possible when the operating or safety information is fully read and the instructions contained therein are strictly followed.

When using power tools, basic safety precautions should always be followed to reduce the risk of fire, electric shock, and personal injury, including the following:







- Before using the battery cartridge, read all instructions and cautionary markings on:
 - (1) battery charger
 - (2) the battery
 - (3) the product using the battery.
- Recharge only with the charger specified by the manufacturer. A charger that is suitable for one type of battery may create a risk of fire when used with another battery pack for which it is not designed.
- Use a power source with the voltage specified on the charger nameplate.
- After charging or before attempting any maintenance or cleaning, unplug the charger from the power source.
- The part of the machine that is battery pack is not waterproof. Do not use in damp or wet locations. Do not expose it to rain or snow. Do not wash it in water.
- Do not touch the inside of the flashlight head with pliers, metal tools, etc.
- Under abusive conditions, liquid may be expelled from the battery, avoid contact. If accidental contact occurs, rinse with water. If liquid comes into contact with eyes, also seek medical help. Liquid ejected from the battery can cause irritation or burns.
- Do not short-circuit the battery cartridge:
 - Do not touch the terminals with any conductive material.
 - Avoid storing the battery cartridge in a container with other metal objects such as nails, coins, etc.
 - Do not expose the battery cartridge to water or rain. A short circuit in the battery can cause a large current flow, overheating, possible burns and even a breakdown.
- If electrolyte gets into your eyes, rinse them with clean water and seek immediate medical attention.
- Be careful not to drop or hit the battery.
- Do not burn the battery cartridge, even if it is badly damaged or completely spent. The battery cartridge may explode and cause a fire.

Caution

- When the tool is not in use, always turn it off and remove the battery cartridge from the tool.
- Do not store the tool and battery cartridge where the temperature may reach or exceed 50°C (122°F).
- Do not hit the tool by dropping it, hitting it, etc.
- Do not expose your eyes to light continuously, it may cause injury.

- Do not cover or obstruct the burning tool with cloth or cardboard, etc. Covering or obstructing it can cause a flame.
- Do not disassemble the charger or the battery cartridge; take it to an authorized Emtop service technician when service or repair is required. Incorrect assembly can result in a risk of electric shock or fire.
- Use tools only with specifically designated battery packs. Use of any other battery pack may create a risk of injury and fire.
- If the operating time has become excessively long, stop operating immediately. It can cause a risk of overheating, possible burns and even an explosion.
- Do not use a damaged battery.

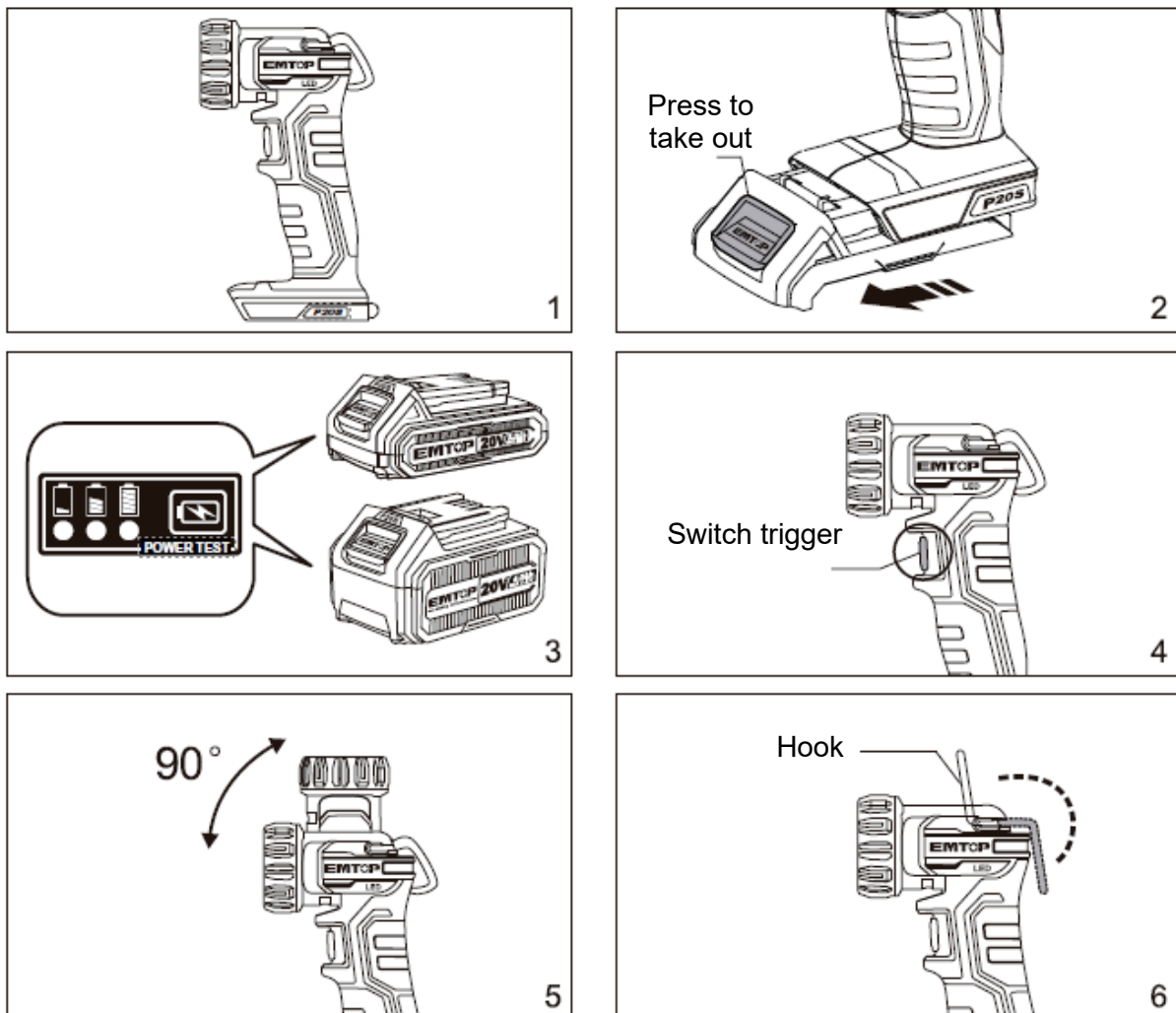
2. TECHNICAL SPECIFICATIONS

Data sheet	
Voltage	20V
LED	5W
Weight (without battery)	200g
normal working temperature	-20°C ~ 60°C
Storage temperature	-20°C ~ 80°C
lumens 	270LM
Execution time 	10am
flash distance 	170m
maximum intensity 	7150 cd
Fall test 	1m
Waterproof 	IP 20

*The tool is designed for use with Emtop's P20S range of batteries and chargers.

Note: Due to the continuous R+D+I program, this document is subject to change without notice.

3. FUNCTIONING



1. The top hook allows the lantern to be hooked in different places for added functionality.
2. Headlight rotation up to 90° (fixed position at any angle)
3. The hard plastic exterior and the ergonomic handle make the tool efficient heat dissipation, better cushioning and more resistance to falls and offering better electrical protection.

4. MAINTENANCE AND CLEANING

- Good maintenance is essential for safe and efficient operation.
- Store the tool, the instructions for use and, if applicable, the accessories in the original packaging. In this way, you always have all the information and parts at hand.
- Pack the product well or use the original packaging to avoid damage during transport. Wear protective gloves.
- Store the tool in a dry and well-ventilated place. Do not store fuel near the machine.

5. ENVIRONMENT

Protect the environment. Recycle the oil used by this machine by taking it to a recycling center. Do not pour used oil into drains, land, rivers, lakes or seas.

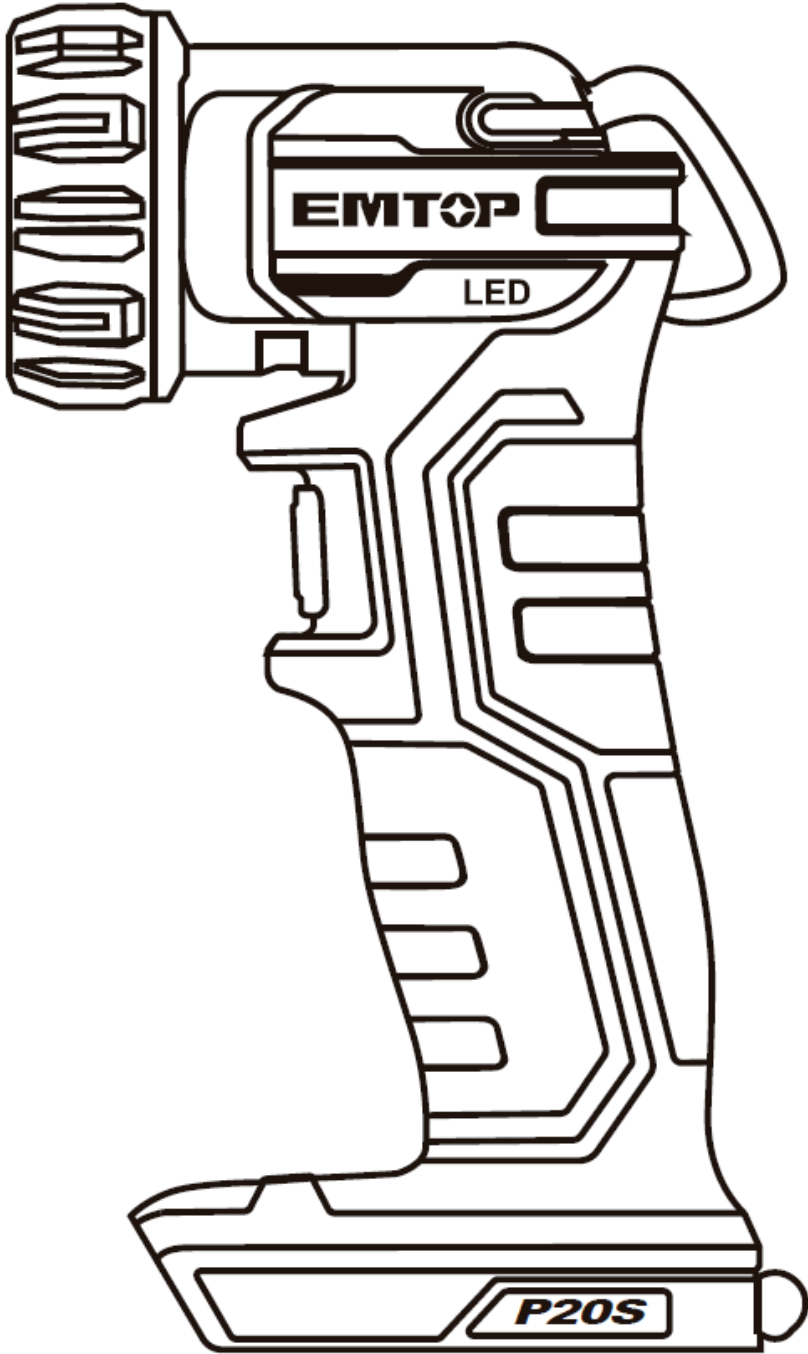
Dispose of your machine in an ecological way. We must not dispose of the machines together with the household waste. Its plastic and metal components can be classified according to their nature and can be recycled. The materials used to pack this machine are recyclable. Please do not dispose of the packaging in the household waste. Dispose of these packages at an official waste collection point.



- Do not dispose of electrical appliances as unsorted municipal waste, use separate collection facilities.
- Contact your local authority for information on available collection systems.
- If electrical appliances are disposed of in landfills, hazardous substances can leach into the groundwater and enter the food chain, harming your health and well-being.
- Recycle raw materials instead of disposing of them as waste.
- The machine, accessories and packaging must be sorted for environmentally friendly recycling.

EMTOP

LED TORCH ELWL2038



— *Making Difference* —