

# EAAC3501

**EMTOP**  
— Making Difference —

*Instructions and user manual*



— Making Difference —

EN



CE

# Index

## **1. SECURITY INSTRUCTIONS**

General safety instructions

Safety symbols

## **2. TECHNICAL SPECIFICATIONS**

## **3. INSTRUCTIONS FOR USE**

Precautions and tips for use

Functioning

## **4. MAINTENANCE AND CLEANING**

## **5. ENVIRONMENT**

## **6. EXPLODED VIEW**

# 1. SECURITY INSTRUCTIONS

## General safety instructions

### **Caution**

Please read the operating instructions carefully and observe the notes provided. Keep the instructions for future reference.



Use the instructions to familiarize yourself with the product, its proper use and safety notes. Safe working with this machine is only possible when the operating or safety information is fully read and the instructions contained therein are strictly followed.

For safety reasons, people who are not familiar with these operating instructions or those who are not trained should not use the product.

*Note: Due to technical product updates, this document is subject to change without notice.*

### 1) Advance safety warnings

- a. Keep the work area clean and well lit. Dark and dirty areas can cause accidents.
- b. Do not use the compressor in explosive atmospheres, such as in the presence of flammable liquids, gases, or dust. Power tools generate sparks that can ignite dust or fumes.
- c. Do not expose the compressor to rain or wet conditions. Water entering the compressor will increase the risk of damage.
- d. Never use the device when you are distracted or not feeling well.
- e. Stay alert, watch what you are doing and use common sense when operating a power tool.
- f. Never leave the compressor unattended while it is in use.
- g. Before starting, lifting or transporting the tool, make sure that the ON/OFF switch is turned off when connecting to the power supply. Avoid unintentional start.
- h. The compressor and hoses can become hot during operation. Touching them can cause burns.
- i. The use of personal protective equipment such as gloves or eye and ear protection is recommended.
- j. Do not inflate any item to more than the intended pressure.
- k. Always check the compressor before use. If it is damaged or worn, do not use it.

### 2) Operation

- a. The plug must match the outlet.
- b. Do not use the air compressor if the switch does not work.
- c. Never use the product for purposes other than those for which it was designed.
- d. Do not exceed the allowable output range of the compressor. Do not inflate large tires such as trucks, tractors, and the like.
- e. Avoid using the compressor at temperatures below +5 degrees.
- f. The appliance vibrates during operation. Therefore, place it in a safe position.
- g. When removing the quick coupler, always hold the hose coupling firmly to avoid injury from hose being pushed out.
- h. Keep cord away from heat, oil, sharp edges, and moving parts. Do not use if cord is frayed or damaged.

- i. The appliance may overheat if it is used continuously. Allow to cool for at least 10 minutes.

### 3) storage and maintenance

- to. Disconnect the tool plug from the power source before making any adjustments, changing accessories, or storing power tools. These preventative safety measures reduce the risk of the power tool becoming accidentally turn on.
- b. Store the compressor out of the reach of children and do not allow persons unfamiliar with the product or with the instructions use it.
- c. Cleaning and user maintenance tasks may not be carried out by unauthorized persons.
- d. Do not carry the appliance by the power cord and never hang it from the power cord feeding.

## Safety symbols



Please read the instruction manual before use.



CE conformity.



Wear safety glasses, hearing protection, and a dust mask.



Waste electrical products must not be disposed of with household waste. Please recycle at appropriate facilities. Check with your local authority or retailer for recycling advice.



Security alert. Only use accessories approved by the manufacturer.

## 2. TECHNICAL SPECIFICATIONS

| <i>Characteristics</i>  |         |
|-------------------------|---------|
| <b>Voltage</b>          | DC 12V  |
| <b>Rated current</b>    | 10A     |
| <b>Flow rate</b>        | 35L/min |
| <b>Maximum pressure</b> | 140PSI  |

## 3. INSTRUCTIONS FOR USE

### Precautions and tips for use

1. Allow sufficient cooling time before storing.
2. All parts are lubricated, no extra lubrication is required.

3. To avoid auto battery low voltage, please run the engine when using the air compressor.
4. Make sure the power switch is in the OFF position when not in use.

## Functioning

### To inflate SUV, car and motorcycle tires:

1. To achieve optimal performance, when using your air compressor, your vehicle's engine must be running.
2. Connect the compressor power cord. Attach the valve tip of the air hose directly to the air valve on the tire.
3. Turn on the compressor and start inflating the tire.
4. When the gauge indicates the desired pressure, turn off the compressor and remove the air hose from the valve (normal tire pressure is 28-35 PSI).

### To inflate other items including bicycle tires, rafts, air beds, and sports balls:

1. Start your vehicle's engine, then connect the compressor's power cable to the battery.
2. A selection of nozzles is provided to fit most inflatables. Simply screw the appropriate nozzle onto the brass tip of the air hose.
3. Connect the appropriate nozzle to the inflatable object and turn on the switch. When the object is inflated to the desired firmness or pressure, turn off the compressor.

## 4. MAINTENANCE AND CLEANING

- Good maintenance is essential for safe and efficient operation.
- Store the machine, the instructions for use and, if applicable, the accessories in the original packaging. In this way, you always have all the information and parts at hand.
- Pack the product well or use the original packaging to avoid damage during transport. Wear protective gloves.
- Store the machine in a dry and well-ventilated place. Do not store fuel near the machine.

## 5. ENVIRONMENT

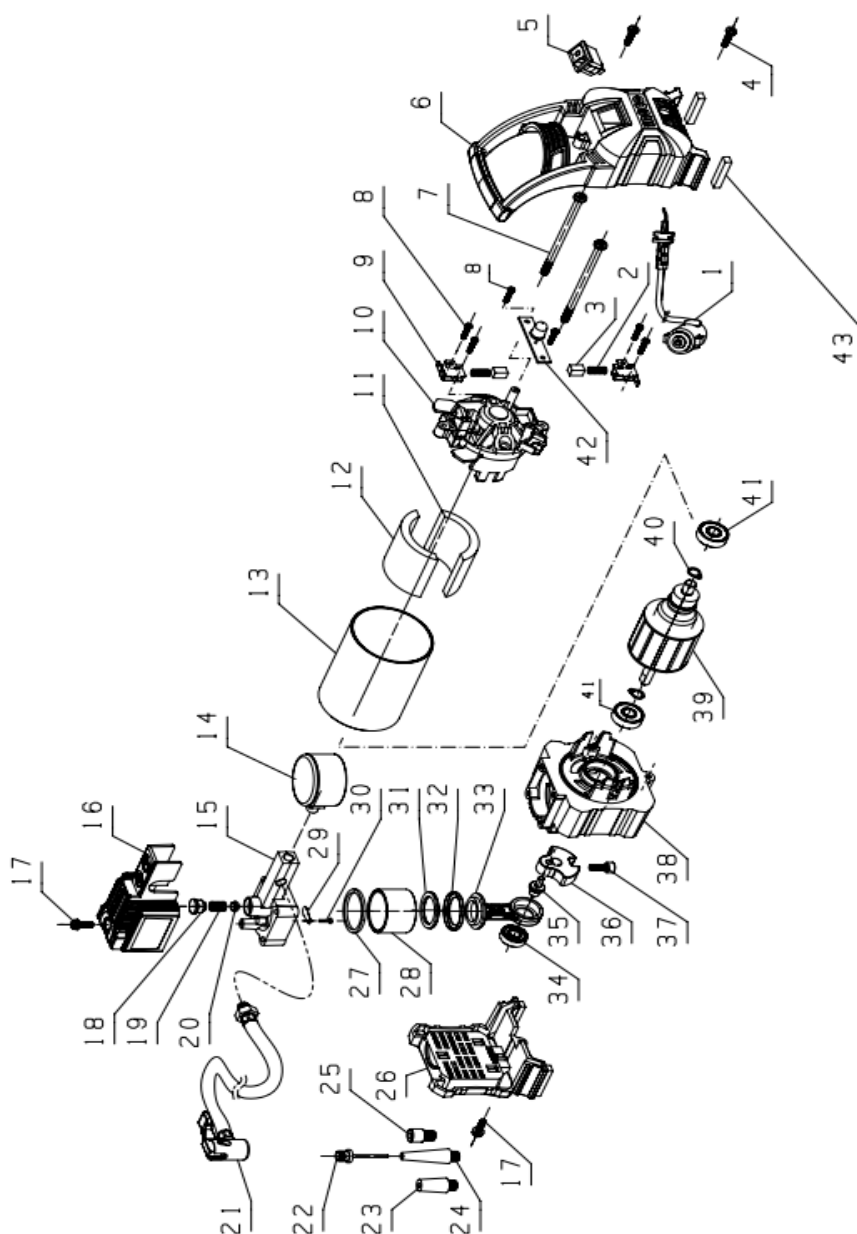
Protect the environment. Recycle the oil used by this machine by taking it to a recycling center. Do not pour used oil into drains, land, rivers, lakes or seas.

Dispose of your machine in an ecological way. We must not dispose of the machines together with the household waste. Its plastic and metal components can be classified according to their nature and can be recycled. The materials used to pack this machine are recyclable. Please do not dispose of the packaging in the household waste. Dispose of these packages at an official waste collection point.



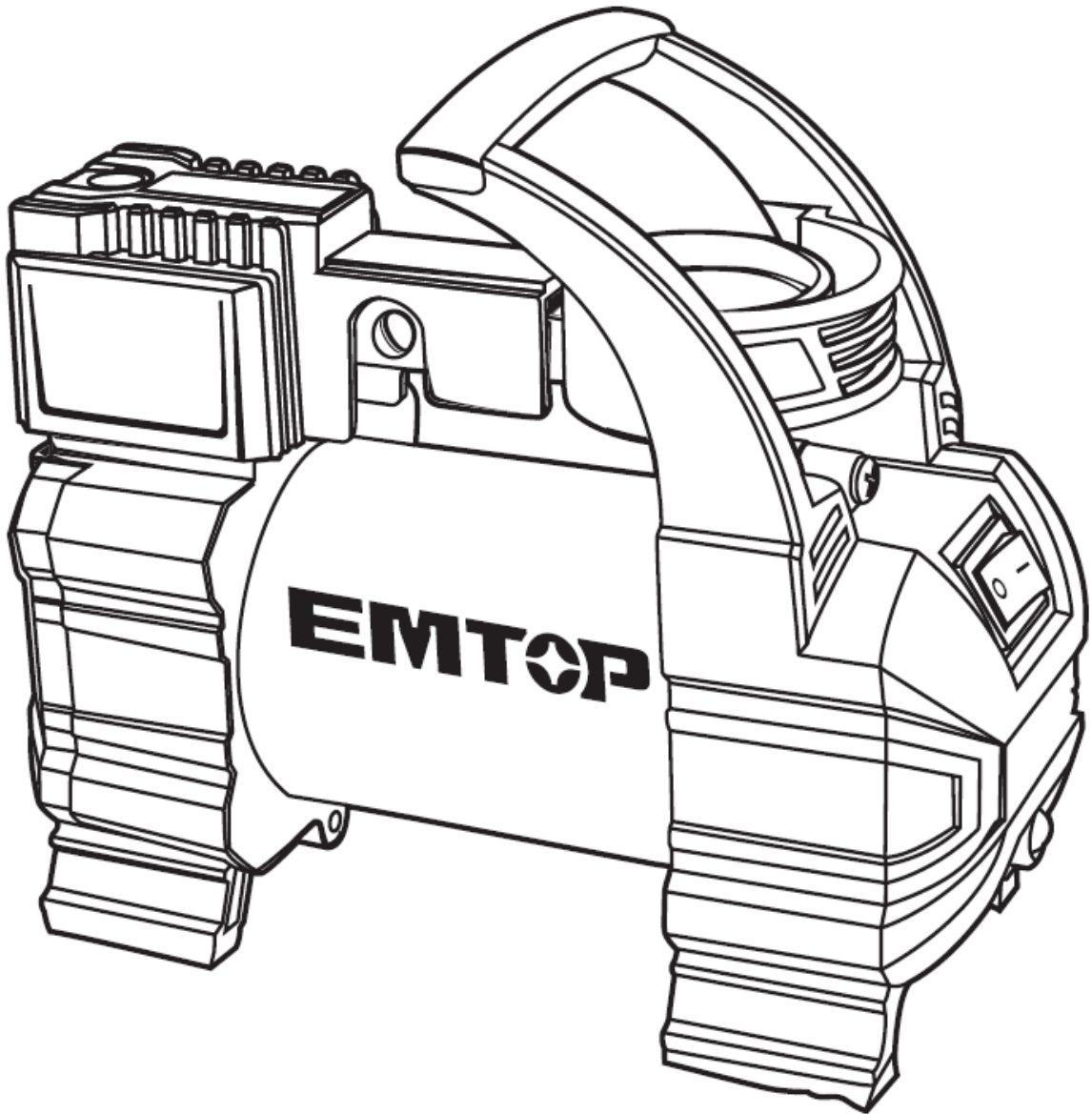
- Do not dispose of electrical appliances as unsorted municipal waste, use separate collection facilities.
- Contact your local authority for information on available collection systems.
- If electrical appliances are disposed of in landfills, hazardous substances can leach into the groundwater and enter the food chain, harming your health and well-being.
- Recycle raw materials instead of disposing of them as waste.
- The machine, accessories and packaging must be sorted for environmentally friendly recycling.

## 6. EXPLODED VIEW



# EMTOP

EAAC3501 AIR COMPRESSOR



— *Making Difference* —