

# Brush cutter

# D536, D545, D553

*ANOVA*

*Instructions and user manual*



EN

Millasur SLU  
Rúa Eduardo Pondal, nº 23 - Pol. Ind. Sigüeiro  
15688 – Oroso, A Coruña - 981 696 465 - [www.millasur.com](http://www.millasur.com)





**Anova** wishes to congratulate you for having chosen one of our products and guarantees you the assistance and cooperation that has always distinguished our brand over time.

This machine is designed to last many years and to be very useful if it is used according to the instructions contained in the user manual. We therefore recommend that you read this instruction manual carefully and follow all our recommendations.

For more information or questions, you can contact us through our web supports such as [www.anova.es](http://www.anova.es)

### **INFORMATION ABOUT THIS MANUAL**

Pay attention to the information provided in this manual and on the appliance for your safety and the safety of others.

- This manual contains instructions for use and maintenance.
- Take this manual with you when you go to work on the machine.
- The contents are correct at the time of printing.
- They reserve the rights to make alterations at any time without affecting our legal responsibilities.
- This manual is considered an integral part of the product and must remain with it in case of loan or resale.
- Ask your dealer for a new manual in case of loss or damage.

### **READ THIS MANUAL CAREFULLY BEFORE USING THE MACHINE**



To ensure that your machine provides the best results, please read the use and safety regulations carefully before using it.

### **OTHER WARNINGS:**

Incorrect use could cause damage to the machine or other objects.

The adaptation of the machine to new technical requirements could cause differences between the content of this manual and the purchased product.

Read and follow all instructions in this manual. Failure to follow these instructions could result in serious personal injury.

# INDEX

---

- 1. SECURITY INSTRUCTIONS**
- 2. TECHNICAL SPECIFICATIONS**
- 3. PRODUCT DESCRIPTION**
- 4. UNPACKING AND ASSEMBLY**
  - 4.1. Handlebar mount
  - 4.2. Blade guard mounting
  - 4.3. Disc assembly 3 points
  - 4.4. Disk disassembly
  - 4.5. Nylon head
- 5. INSTRUCTIONS FOR USE**
  - 5.1. Before using
  - 5.2. Engine fuel
  - 5.3. Fuel mixing container
  - 5.4. Check the air filter
  - 5.5. Engine start
  - 5.6. Adjust the harness
  - 5.7. Court
  - 5.8. Cutting accessories
  - 5.9. Rollback and Related Warnings
  - 5.10. Nylon expansion
  - 5.11. Stop engine
- 6. MAINTENANCE AND CLEANING**
- 7. STORAGE**
- 8. PROBLEM SOLVING**
- 9. WARRANTY**
- 10. ENVIRONMENT**
- 11. EXPLODED**
- 12. CE CERTIFICATE**

# 1. SECURITY INSTRUCTIONS

## 1.1. Safety symbols

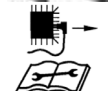
The use of symbols in this manual is intended to draw your attention to potential hazards. The safety symbols and the explanations that accompany them must be fully understood. Warnings by themselves do not eliminate risks and cannot replace correct actions to prevent accidents.



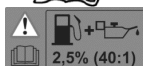
Read the instruction manual and follow all warnings and safety instructions before any use, refer to the corresponding paragraph in this manual.



It complies with the European regulations applicable to this product.



Remove the ignition cable before any maintenance work and read the instructions for use.



Take care of the ratio when handling fuels and lubricants.



Do not expose to rain.



The exhaust and exhaust gases are hot. Don't touch them.



Risk of injury from flying objects. Always keep a sufficient safety distance. The distance between the machine and passers-by must be at least 15 meters.



Starting the engine creates sparks. Sparks can ignite nearby flammable gases.



Engines emit carbon monoxide, a colorless, odorless gas. Breathing carbon monoxide can cause nausea, fainting, or death.



For outdoor use only.



Do not light flames or smoke near the machine.



When using the product, wear ear protection, eye protection, head protection, and protective gloves.



Wear non-slip shoes when using the device.



Please push the bubble 7-10 times before using to make sure the fuel is full of oil.



Choke closed (cold start position).

Choke open (operating position).



Be careful with the thrust of the blade.



Make sure that the cutting head is not in contact with foreign objects during start-up and during work.



Do not use a toothed saw type cutting accessory.



Pay close attention to your feet to avoid injury during operation.



Keep passersby away. Do not touch the nylon until it comes to a complete stop.



3-point brush cutter disc cutting width: 255 mm

## 1.2. Safety warnings

### **⚠ Important**

The machine will always be used in accordance with the manufacturer's instructions set out in the instruction manual.

The manufacturer will not be responsible in cases of inappropriate use or modifications of the product. Furthermore, follow the safety advice, the installation and operation manual and also the current regulations for accident prevention.

Appliances with incorrect or missing parts should not be used. The dealer provides you with information on spare parts.

### **⚠ Important**

Because Anova regularly improves its products, you may find slight differences between your machine and the descriptions in this manual. Anova may make changes to the machine without notice and without obligation to update the manual, but the essential safety and operational features will remain unchanged.

*Note: Due to technical product updates, this document is subject to change without notice.*

### 1.2.1. Training

- a) Please read the instructions carefully. Be familiar with the controls and proper use of the equipment.
- b) Never allow children or persons unfamiliar with these instructions to use the machine.
- c) Please note that the user is responsible for accidents or dangers that occur to other people or their property.
- d) Major repair work should only be carried out by specifically trained personnel.
- e) All persons, children and animals must be kept at a minimum distance of 15 meters from the machine while it is running.

### 1.2.2. Preparation

- a) Gasoline is highly flammable.
  - Store fuel in containers specifically designed for this purpose.

- Refuel outdoors only and do not smoke while refueling.
  - Add fuel before starting the engine. Never remove the fuel tank cap or add gasoline while the engine is running or when the engine is hot.
  - If gasoline is spilled, do not attempt to start the engine, move the machine away from the area of the spill, and avoid creating any source of ignition until the gasoline vapors have dissipated.
  - Replace all caps securely.
- b) Replace exhaust if defective.
  - c) Before use, always inspect to see that the different components of the machine are not worn or damaged. If so, replace them before using the machine.
  - d) Do not smoke near the machine.
  - e) Do not wear loose clothing, jewelry, or similar items that could get caught in the starter motor or other moving parts.
  - f) Never place any objects in the ventilation openings. Failure to comply may result in injury or damage to the machine.
  - g) Derating is necessary if use in temperatures, altitudes, and humidity are higher than the following conditions.
    - Maximum working temperature: 40°C
    - Maximum altitudes: 1000 m
    - Maximum humidity: 95%

### 1.2.3. Operation

- a) Do not run the engine in an enclosed space where dangerous carbon monoxide gases can accumulate.
- b) Keep the machine free of oil, dirt and other impurities.
- c) Always place the product on flat and stable surfaces.
- d) Never use the product inside buildings or in an environment without adequate ventilation. Pay attention to airflow and temperature.
- e) Do not use or store the product in wet or humid environments.
- f) Make sure the muffler and air filter are working properly. These parts serve as flame protection in the event of a misfire.
- g) To avoid possible burns, do not touch the exhaust system or other parts that become hot during operation. Pay attention to the warnings on the machine.
- h) The motor must not work with an excessive rotation speed. Running the engine at excessive rotation speed increases the risk of injury. Parts that affect the speed of rotation must not be modified or replaced.
- i) Periodically check the fuel system for leaks or signs of abrasion, such as porous pipes, loose or missing clamps, and damage to the tank or tank cap. Before use, all defects must be repaired.
- j) Work only in daylight or in good artificial light.
- k) Never lift or transport a machine with the engine running.
- l) Stop the engine:
  - Whenever you leave the machine
  - Before refueling
- m) Before checking or adjusting the machine, the spark plug and ignition wire must be removed respectively to prevent accidental starting.
- n) Do not use the machine when you are tired, ill, or under the influence of substances or medicines that may affect your ability.
- o) Comply with local regulations for using the brush cutter.
- p) Wear safety glasses and ear protection. Other hand, leg and foot safety equipment is recommended. Proper safety equipment reduces the risk of injury from thrown objects or accidental contact with the brush cutter.

- q) Be sure to maintain a firm footing. Use the brush cutter only on flat surfaces where it has a firm base.
- r) While working, always wear suitable footwear and long pants. Do not use the equipment barefoot or with open sandals. Always maintain proper footing and use the brush cutter only when it is on a stable, secure and level surface.
- s) Always hold the brush cutter with both hands. Putting your hands in the wrong positions increases the risk of injury and should therefore be avoided. It is necessary to change jobs regularly and take frequent breaks.
- t) Always wear the harness when using the tool and adjust the length of the harness to ensure it is suitable for use.
- u) Always use the accessories and consumables recommended by the manufacturer.
- v) Be careful not to injure your hands and feet on the cutting attachments.
- w) Always make sure that the ventilation openings are free of dirt.
- x) Perform a daily inspection before use and after any drop or other impact to identify significant defects.
- y) Maintain a correct working position, rest frequently and change jobs. Keep the balance position during the use of the tool, use the harness.

Improper use of the machine and even vibrations caused by it can cause serious injuries. To reduce the effects of vibration:

- Keep your body warm in cold weather. During use, wear gloves to keep hands and wrists warm.
- Take frequent breaks. Limit the duration of daily exposure.
- Keep the tool in good repair, all fasteners tightened and worn parts replaced.

#### 1.2.4. Maintenance and storage

- a) Keep all nuts and bolts tight to ensure the equipment is in safe operating condition.
- b) Never store equipment with gasoline in the tank inside a building where fumes could reach an open flame or spark.
- c) Let the engine cool down before storing it.
- d) To reduce the risk of fire, keep the engine, exhaust, and gasoline storage area free of plant material and excess grease.
- e) Replace worn or damaged parts for safety.
- f) If it is necessary to drain the fuel tank, it should be done outdoors and safely.
- g) Do not store the machine without first cleaning it and checking each component of it.
- h) Never remove the guards from the cutting accessories.
- i) Store the cutting attachment properly, never use a rusty blade. It can cause injury during work.

#### 1.2.5. Transport and handling

- a) Whenever the machine is going to be handled or transported, you must:
  - turn off the engine, wait for the cutting device to stop and disconnect the spark plug cap.
  - place the protection of the cutting device.
  - wear protective gloves when handling the blades.
  - Keep the blade protection device activated.
  - hold the machine only by the handles and position the cutting device in the opposite direction to that used during operation.

- b) When using a vehicle to transport the machine, place it so that it cannot cause danger to people and fix it firmly in place to prevent it from tipping over, which could cause damage or fuel spillage.



### 1.3. Expected use

This machine is designed to be used in accordance with the descriptions and safety instructions indicated in this operation manual.



- For private use.
- For trimming lawn edges and small inaccessible grassy areas (eg under bushes).
- For cutting wild vegetation, shrubs and brush.



You are not allowed to use this machine for any other purpose.

The user is responsible for all damages to third parties and damage to his property.

Only use the machine under the technical conditions stipulated and delivered by the manufacturer.

Arbitrary changes to the product will exclude the manufacturer from any liability for resulting injuries and/or damages.

### 1.4. Other safety warnings

- Keep a firm grip on the brush cutter handle with both hands. If you stop work, move the throttle to idle position.
- Always be sure to maintain a firm, even posture while working.
- Keep the engine revs at the level required to do the cutting job and never increase the revs above the necessary level.
- If grass gets caught in the disc during operation, or if you need to service the machine or refuel, always make sure to turn off the engine first.
- If the blade touches a hard object such as a stone, immediately stop the engine and check for a problem. If so, replace the drive.
- If someone yells while working, always make sure to stop the engine before turning the machine around.
- Never touch the spark plug or spark plug wire while the engine is running. If you do, you could get an electric shock.
- Never touch the exhaust, spark plug, or other metal parts of the engine while the engine is running or immediately after shutting it down. If you do, you could be severely burned.
- When you have finished cutting in one place and want to continue working in another place, turn off the engine and turn the machine so the blade is facing away from your body.
- Check that the cutting attachment has stopped turning with the engine idling before starting to use the machine.



## 2. TECHNICAL SPECIFICATIONS

	D536	D545	D553
<b>Start</b>	manual recoil start	manual recoil start	manual recoil start
<b>Weight</b> <i>(Empty tanks and without cutting attachment)</i>	6.8kg	7.2kg	7.2kg
<b>Fuel tank capacity</b>	0.75L	0.9L	0.9L
<b>Type of motor</b>	2-stroke Air-cooled	2-stroke Air-cooled	2-stroke Air-cooled
<b>Displacement</b>	35.3cc	44.8cc	52.8cc
<b>Maximum motor speed with nylon</b>	10000 min-1	10000 min-1	10000 min-1
<b>Maximum motor speed with disk</b>	9200 min-1	9500 min-1	9500 min-1
<b>Shaft diameter</b>	Ø26mm	Ø28mm	Ø28mm
<b>Gear ratio</b>	19:14	19:14	19:14
<b>3 point cutting disc</b>	Ø255xØ25.4x1.4mm	Ø255xØ25.4x1.4mm	Ø255xØ25.4x1.4mm
<b>Recommended nylon head</b>	Ø2.8mm	Ø2.8mm	Ø2.8mm
<b>Nylon cutting width</b>	450mm	450mm	450mm
<b>Engine idle speed</b>	3000min-1±300min-1	3000min-1±300min-1	3000min-1±300min-1
<b>Clutch Engagement Speed</b>	4200min-1	4200min-1	4200min-1
<b>Sound level LwA</b>	113dB(A)	114dB(A)	115dB(A)
<b>Maximum engine performance</b>	1.2kW	1.6kW	1.9 kW
<b>Fuel ratio</b>	40:1	40:1	40:1

### 2.1. Noise information

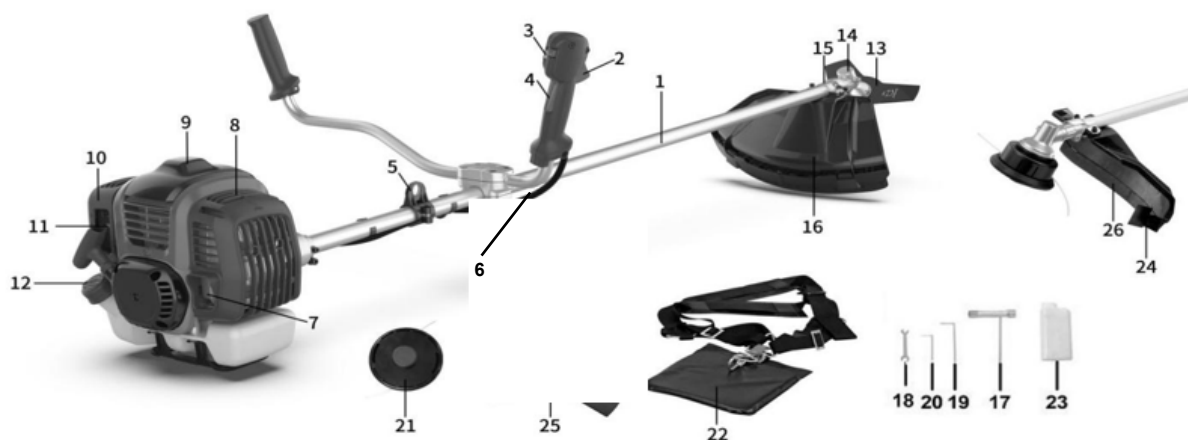
The vibration emission level stated in this data sheet has been measured in accordance with a standardized test provided in ISO 11806-1 and can be used to compare one tool with another.

The declared vibration emission level represents the main applications of the tool. However, if the tool is used for different applications, with different accessories, or with poor maintenance, the vibration emission may differ. This can significantly increase the level of exposure over the entire work period.

An estimate of the level of exposure to vibration must also take into account times when the tool is turned off or when it is running but not doing the job. This can significantly reduce the level of exposure over the entire work period.

Identify additional security measures to protect the operator from the effects of vibration, such as: keeping the tool and accessories in good condition, keeping hands warm, organization of work patterns. Remember to wear hearing protection.

### 3. PRODUCT DESCRIPTION



- |                          |                                       |
|--------------------------|---------------------------------------|
| 1. Bar                   | 14. Transmission elbow                |
| 2. Throttle trigger      | 15. Guard support                     |
| 3. Power switch          | 16. Brush cutter disc/nylon protector |
| 4. Safe trigger throttle | 17. Spark plug wrench                 |
| 5. Attach harness        | 18. Flat key                          |
| 6. Electrical wires      | 19. Allen key 5                       |
| 7. Exhaust               | 20. Allen key 4                       |
| 8. Exhaust cover         | 21. Nylon head                        |
| 9. Spark plug cap        | 22. Harness                           |
| 10. Air filter cover     | 23. Fuel mixing container             |
| 11. Pull start           | 24. Nylon cutting blade               |
| 12. Fuel tank cap        | 26. Extra guard                       |
| 13. Cutting disc         |                                       |

## 4. UNPACKING AND ASSEMBLY

### ⚠ **Caveat**

Make sure the brush cutter is shut off properly and the engine has come to a complete stop before mounting and adjusting.

### 4.1. Handlebar mount

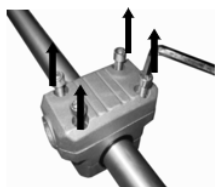


Fig.1-1



Fig.1-2

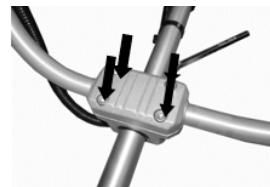


Fig.1-3

1. Remove the screw fixing device and remove the top cover. (fig. 1-1)
2. Put the handle in position and mount the top cover. (fig.1-2)
3. Mount and tighten the screws. (fig.1-3)

### ⚠ **Caution**

Do not tighten the screws until you have brought the handlebars into the optimum working position. Always adjust the position of the handlebar with the accessories fully assembled.

The black cable tie can be used to fix the throttle cable to the brush cutter bar. (Fig. 2)



Fig.2

### 4.2. Blade guard mounting

1. Place the guard on the accessory. (fig. 3-1)
2. Mount and tighten the screws. (fig. 3-2)



Fig.3-1

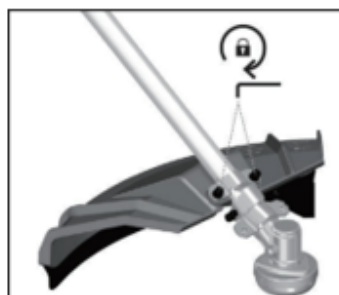


Fig.3-2

### **⚠ Warnings:**

1. When using the nylon head, the additional guard must always be installed with the cutting blade. (Fig.3-3, Fig.3-4)

- Fix the additional protection (26) with the screw (B). (Fig. 3-3)

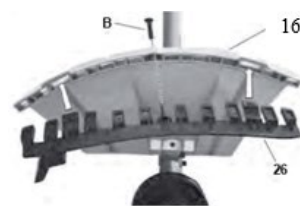


Fig.3-3

2. Remove the additional protection.

- Unscrew the screw (B); (Figure 3-3).
- Push the clip (C) and remove the additional protection. (Fig. 3-4).

### 4.3. Disc assembly 3 points

- Remove the outer flange after loosening the nut, then put the disc, outer flange, guard and nut according to priority as shown in the picture below.
- Please note that the rotation direction of the disc must be the same as the image below.
- Use a screwdriver to hold the flange and tighten the nut counterclockwise, make sure the nut is tight enough.



Fig.4.1

### **⚠ Caveat**

Check the disc and output shaft after each adjustment or assembly, it must be correctly assembled and in perfect condition. Remember to wear protective gloves for handling.



Fig.3-4

### 4.4. Disk disassembly

- Use a screwdriver to lock the centering washer.
- Loosen the nut clockwise (right).
- Remove the bowl and lock washer.
- Remove the disk.



Fig.5-1

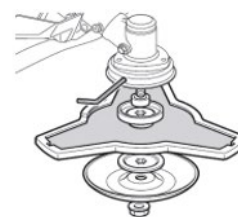


Fig.5-2

## 4.5. Nylon head

### ⚠ **Caveat**

Make sure the trimmer head has been mounted correctly before using it.

### 4.5.1. Remove nut from elbow

Align the two holes of the centering washer and the guard, use a screwdriver to hold the centering washer as shown below, and turn the socket wrench clockwise, the nut will be released.



Fig.6

### 4.5.2. Nylon head assembly

Remove the other protector after loosening the nut. Still holding the centering washer, take the nylon head on the shaft and turn it counterclockwise (left), the head is installed.

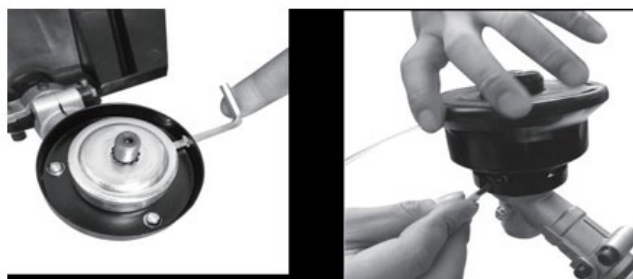


Fig.7

### 4.5.3. Disassembly of the nylon head of the machine

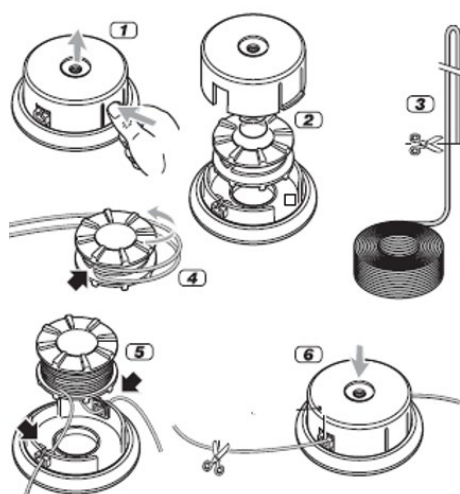
Use a screwdriver to hold the centering washer, and then turn the nylon head clockwise (right), leaving the head disassembled.



Fig.8

#### 4.5.4. Replacement of nylon

Stop the engine and follow the sequence below.



#### **⚠** **Caveat**

Never use cutting accessories not recommended by the manufacturer. Unapproved cutting accessories can cause serious injuries during work.

## 5. INSTRUCTIONS FOR USE

---

### 5.1. Before using

Always read the instruction manual carefully and check the machine before using it.

#### **⚠** **Caveat**

The brush cutter is equipped with a two-stroke engine, so there is no need to fill the oil separately. Fill the oil properly mixed with fuel.

Check the cutting attachment, never use dull, cracked or damaged blades.

Make sure the handlebars and safety features work properly. Never use a machine that is missing a part or has been modified outside of its specifications.

The covers must be correctly installed and in good condition before starting the machine.

#### **⚠** **Caveat**

Always use safety gloves, protectors for legs and feet, ears and eyes. They must be CE marked and approved according to the PPE directive.

Poor equipment can reduce protection and cause personal injury on the job.

## 5.2. Engine fuel

### ⚠ **Caveat**

The brush cutter is equipped with a two-stroke engine; use only fuel mixed with oil.

Refuel the machine only in well-lit and ventilated areas. Avoid fuel spillage. Never refuel the machine during operation. Let the engine cool down for a few minutes before refueling.

Refueling should not be done near open flames, control lamps, or spark-producing electrical equipment such as power tools, welders, or sanders.

1. Make sure the machine is turned off by turning the engine switch to the "off" position.
2. Visually check fuel, remove fuel cap and check fuel level.
3. Fill the fuel tank with unleaded fuel mixed with oil from an approved fuel container, because fuel expands, fill the tank only to the level indicated on the fuel.
4. Turn the fuel cap clockwise to snap it into position.

### ⚠ **Caveat**

- Do not refuel while the engine is running or hot.
- Make sure there are no fuel leaks.
- Use quality two-stroke engine oil and make a mixture of 40 parts gasoline to one part oil only (2.5% oil mixed with fuel).
- Never use two-stroke oil intended for water-cooled engines.
- Never use oil intended for four-stroke engines.

Poor oil quality and/or an oil/fuel ratio that is too high can jeopardize the operation and shorten the life of catalytic converters.

## 5.3. Fuel mixing container

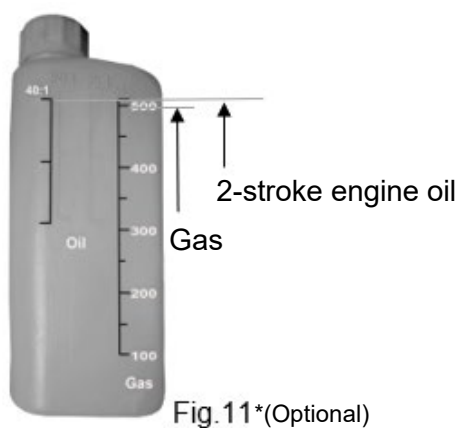


Fig.11\*(Optional)

- a) Place the fuel mixing container on a firm, flat surface.
- b) First fill the gasoline up to the scale marked as "500" gas.
- c) Then fill in the 2-stroke engine oil until the scale marks "40:1" oil.
- d) Shake the container gently and then fill the fuel tank.

Use fuel with at least 90 octanes. We recommend unleaded gasoline as it leaves less residue inside the engine and on the spark plug, and prolongs the life of the exhaust system.

Never use old or dirty gasoline or oil/gasoline mixtures. Avoid contamination with dirt or water in the tank.

Occasionally knocking or ignition knocking can be heard at high loads. This is normal and is not cause for alarm. If knocking or metallic noise occurs at ignition during normal loads and with a constant engine speed, you need to change the quality of gasoline. If this does not solve the problem, contact an official distributor.

When running at continuous high RPMs, a higher-octane rating is recommended.

## 5.4. Check the air filter

- Check the air filter to make sure it is clean and in good condition.
- Loosen the screw on the air filter cover and remove the cover, then check the air filter.
- Clean or replace the air filter if necessary.

## 5.5. Engine start

### ⚠ **Caveat**

The cutting attachment will begin to move when the engine is started. Make sure that the accessory cannot come into contact with any object at the time of starting.

Make sure that there are no unauthorized persons in the work area, otherwise there is a risk of serious personal injury.

To start the engine:

- 1) Press the primer cylinder several times until it is filled with fuel. (fig.12)

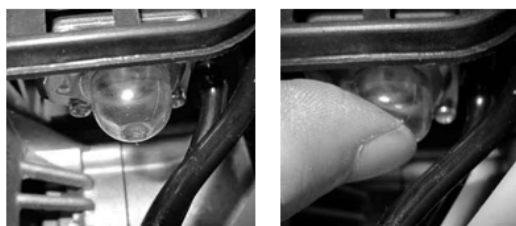



Fig.12

- 2) Turn the engine switch to the "I" position. (Fig. 13)  
Press the throttle trigger, throttle trigger lockout, and lockout pin together to lock the trigger.



Fig.13

*Attention: the machine has the Auto re-start power switch, which will always be in the "I" position. Press it to "O" manually if necessary to turn off the machine.*

- 3) Move the choke lever to the position . (fig.14)

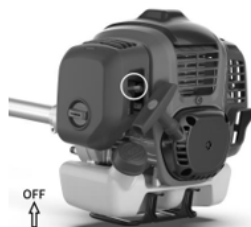



Fig.14

Close Choke: Start Position 

- 4) Slowly pull the starter handle until it lights. (fig.15)





Fig.15

*Note: When the engine is first started, it will require several attempts to start until fuel reaches the tank from the tank to the engine.*

- 5) Turn the choke lever to the run position. (Fig. 16)



- 6) Quickly pull the starter handle until the engine starts.
- 7) After starting the engine, let it run for 2 to 3 minutes to warm up before subjecting it to any load.
- 8) Hot start: When the machine is hot, the choke position remains at the "start position" (Fig. 16), the user can start the machine by repeating steps 1,2,5,6.

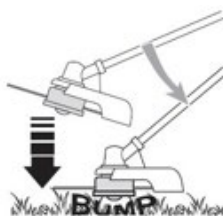
Under the following conditions, the machine must stop:

- 1) When the motor rotation speed changes.
- 2) When sparks occur.
- 3) When the disk is damaged.
- 4) In case of misfire.
- 5) In case of high vibration.
- 6) When flames or smoke appear.
- 7) With rain or storm.

### **▲ Caveat**

Check that the cutting attachment always stops when the engine is idling.

*Note: If you use nylon instead of a disc, before cutting, you must first tap the head slightly towards the ground so that the nylon comes out at working size.*



## 5.6. Adjust the harness

According to the picture shown, adjust the safety harness well. Stretch the harness and as shown below, and then place the harness on the shoulder.

*Note: Carrying strap design and type may vary.*

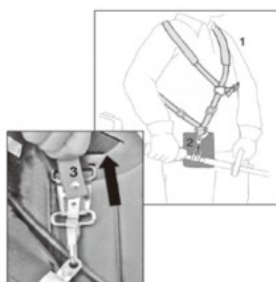


Fig.17-1

- Put the harness on your shoulder (1).
- Adjust the length of the belt so that the spring hook (2) is approximately one hand width below the right hip.
- Please note that this harness has a safety device that allows you to immediately unhook the harness from the machine in an emergency. To do this, pull hard on the red tab (3) on the harness.

*Note: Never start the engine with the transport harness attached to the machine.*

## 5.7. Court

During cutting, do not keep operating speed just above clutch engagement speed. Any prolonged use at low RPMs is likely to cause premature clutch wear.

On the other hand, the user should not keep the engine revs at the maximum revs after cutting. Any prolonged use at the higher revs is likely to reduce the life of the engine.

Remember:

- Mow from right to left (Fig. 18)
- If the cutting attachment hits rocks or other debris, stop the engine and check to see if anything has been damaged and the cutting attachment is still secure.
- If branches or wet grass remain on the cutting attachment, stop the engine and remove them.



Fig.19

### **⚠ Caution**

In an emergency, stop the engine by moving the engine switch to the "O" stop position.

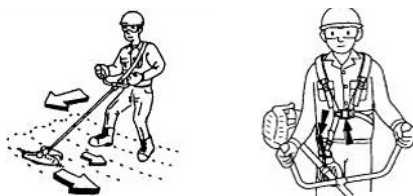


Fig.18

## 5.8. Cutting accessories

Use only cutting devices approved by the manufacturer.

### **⚠️ Caveat**

Taking into account that the selection, application and use of the accessory to be placed in the variety of possible uses are actions carried out solely by the user, the latter assumes responsibility for damages of any nature due to such actions. In case of doubt or lack of knowledge of the characteristics of each accessory, contact your official Anova distributor.

## **5.9. Rollback and Related Warnings**

Kickback or kickback is a sudden reaction to a pinched or snagged spinning disc. Pinching or snagging causes the rotating accessory to stall rapidly, which in turn causes the runaway tool to be forced in the opposite direction of accessory rotation at the point of binding.

For example, if a wheel snags or binds on a rock, the edge of the wheel entering the pinch point can dig into the surface of the material and cause it to pop out or fly out. The disc can jump towards or away from the operator, depending on the direction of movement of the disc at the pinch point.

Kickback is the result of tool misuse and/or incorrect operating procedures or conditions and can be avoided by taking the proper precautions listed below.

- a) Maintain a firm grip on the tool and position your body and arm to allow you to resist kickback forces.
- b) Never place your hand near the rotating accessory. The accessory can roll back on your hand.
- c) Be especially careful when working around corners, sharp edges, etc. Prevent accessory from bouncing and snagging. Corners, sharp edges, or bouncing tend to snag the rotating accessory and cause loss of control or kickback.
- d) Use approved and appropriate safety equipment for these jobs, such as gloves, helmet, safety clothing, screens, leg protectors, etc.

## **5.10. Nylon expansion**

To spread the nylon, run the engine at full speed and lightly tap the cutting head on the ground. This will automatically extend the nylon. The cord cutter under the outer shield will cut the line to the proper length. (fig.20)

### **⚠️ Caveat**

Do not use any type of metal wire or plastic-coated metal wire in the cutting head. This can cause serious injury to the user.

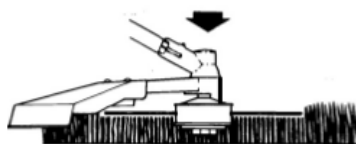


Fig.20

## **5.11. Stop engine**

- Release the throttle trigger and let it idle for a few minutes.
- Shut off the engine by moving the engine switch to the stop position.

The cutting attachment may cause an accident if it continues to rotate after the engine has stopped or after the engine switch has been released. When the machine has stopped, carefully check that the cutting attachment has stopped rotating before leaving the machine.

## 6. MAINTENANCE AND CLEANING

Good maintenance is essential for safe and efficient operation. It will also help reduce air pollution and increase the life of the machine.

The purpose of the maintenance and adjustment program is to keep the machine in the best operating condition.

Shut off the engine before performing any maintenance. If it is necessary to run the engine, make sure the area is well ventilated. The exhaust contains carbon monoxide gas which is harmful to health.

Always select accessories recommended and approved by the manufacturer. The use of other non-approved accessories and spare parts may damage the machine. Remove safety devices after or during maintenance.

### 6.1. maintenance chart

Maintenance	Diary	Weekly	Monthly
Clean the exterior of the machine.	X		
Make sure the throttle trigger locks and the throttle works properly from a safety point of view.	X		
Check that the engine switch works correctly.	X		
Check that the cutting attachments do not move when the engine is idling or when the choke is at the starting throttle position.	X		
Check that the cutting accessories are not damaged and do not show signs of cracks or other damage. Replace them if necessary.	X		
Check that the disc guard is not damaged or deformed. Replace the protector if it is bent or damaged.	X		
Clean the air filter. Replace if necessary.	X		
Check that the nuts and bolts are tight.	X		
Check for fuel leaks from the engine, tank, or similar components.	X		
Check starter and starter cable.		X	

Clean the outside of the spark plug. Remove it and check the electrode gap. Adjust gap to 0.6-0.7mm or replace spark plug. Check that the spark plug is equipped with a spark plug boot.		X	
Clean the cooling system of the machine.		X	
Clean the exterior of the carburetor and the space around it.		X	
Check that the flange, cap and nut are assembled correctly and tight		X	
Clean the fuel tank.			X
Check all cables and connections.			X
Check the clutch, clutch springs, and clutch drum for wear. Replace if necessary (by an official distributor).			X
Replace spark plug. Check that the spark plug is fitted with a spark plug boot.			X
To reduce the risk of fire, clean dirt, leaves and excess lubricant, etc. exhaust and engine.			X

Maintenance should be performed at regular intervals in each of the months indicated or after a certain number of operating hours (whichever comes first). (1)		Before using each time	Monthly or after 25 hours	Every three months or after 50 hours	Every six months or after 100 hours
Air filter	Clean up			X (1)	
fuel tank and filter	Clean up				X (2)
fuel pipes	Check (replace if necessary)	Every three years (2)			

(1) If used in dusty areas, please perform maintenance more frequently.

(2) A specialist technician should perform this maintenance if the owner does not have the proper tools or mechanical knowledge.

## 6.2. Air filter

### Important

Cleaning the air filter is essential to guarantee the efficiency and duration of the machine. Do not work with a damaged or no filter, as this could permanently damage the engine.

Clean the filter as follows (for model D545):

- Loosen the knob (3), remove the cover (1) and the filter (2).
- Clean the filter (2) with soapy water. Do not use gasoline or other solvents.
- Let the filter air dry.
- Replace the filter (2) and the cover (1), tightening the knob (3) again.

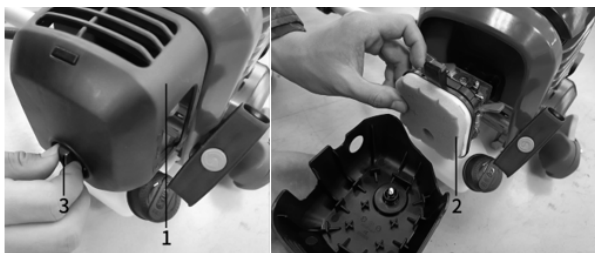


Fig.21

### ⚠ **Caveat**

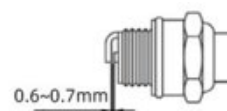
The use of gasoline or combustible solvents for cleaning may cause a fire or explosion. Therefore, use only soapy water. Never use the machine without the air filter.

## 6.3. Spark plug

To ensure proper engine operation, the spark plug must be properly gapped and free of deposits. For its correct maintenance:

- 1) Remove the spark plug cap.
- 2) Clean any debris around the base of the spark plug.
- 3) Use the socket wrench to remove the spark plug.
- 4) Visually inspect the spark plug. Remove carbon deposits with a wire brush.
- 5) Check for discoloration on top of the spark plug. The standard color should be a tan color.
- 6) Check the spark plug gap. The acceptable gap should be between 0.6~0.7mm.
- 7) Install/reinstall spark plug carefully by hand.
- 8) Once the spark plug is seated, tighten it with a socket wrench.
- 9) Reinstall the spark plug cap on top of the spark plug.

Note: Recommended spark plug: L8RTC



## 6.4. Cleaning

- Keep your machine clean, the exterior of the machine can be cleaned with a soft cloth dampened with a mild detergent, if necessary, never use water to clean the machine as it may damage internal parts.
- Some maintenance products and solvents can damage plastic parts, including products containing benzene, trichlorethylene, chloride, and ammonia.
- To reduce engine damage, periodically clean the slots with compressed air and clear the exhaust area of sawdust, twigs, leaves, or other debris.
- Take special care to keep the ventilation inlets/outlets clear of obstructions. Cleaning with a soft brush followed by a blast of compressed air is usually sufficient to ensure acceptable internal cleanliness.
- Wear eye protection when cleaning.

## 6.5. Empty the fuel tank

- 1) Unscrew the fuel tank cap.
- 2) Completely pour the fuel into a suitable container.

- 3) Press the primer cylinder several times to pump the residual fuel into the fuel tank.
- 4) Pour fuel again.
- 5) Place the machine on a level and stable surface.
- 6) Reinstall the fuel tank cap.

### ⚠ **Caveat**

When transporting the machine in a car, first empty the fuel tank completely to prevent leakage.

## 6.6. Transmission elbow

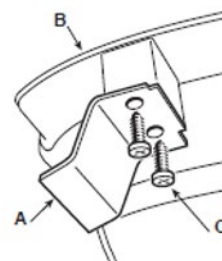
- Lubricate with lithium grease.
- Remove screw (1) and grease, turning the shaft by hand until grease comes out, then replace screw (1).



Fig.22

## 6.7. Sharpening of the nylon cutting blade

- Remove the blade (A) from the protection (B) by removing the screws (C).
- Clamp the cutting blade in a vice and sharpen it with a flat file, taking care to maintain the original cutting angle.
- Reassemble the blade in the guard.



## 7. STORAGE

Store the machine, the instructions for use and, if applicable, the accessories in the original packaging. In this way, you always have all the information and parts at hand.

Pack the product well or use the original packaging to avoid damage during transport. Wear protective gloves when handling cutting blades or accessories.

Keep the disk protection device activated, except when working directly on the disk.

Store the machine in a dry, well-ventilated place with an empty fuel tank. Do not store fuel near the machine.

## 8. PROBLEM SOLVING

### ⚠ **Caveat**

Risk of injury if the engine starts suddenly. Protect yourself against injury. Before doing any work on this product:

- Turn off the motor.
- Remove the ignition key.
- Wait until all moving parts have stopped and the engine has completely cooled down.
- Remove the spark plug connector from the engine so that the engine cannot start suddenly.

Problem	Verification	Condition	possible cause	Solution
Engine stalls, struggles to start, or won't start	fuel in the carburetor	The fuel does not reach the carburetor	Blocked fuel filter	clean or replace
			fuel supply blocked	clean or replace
			Carburetor	Get in contact with your distributor
	fuel in cylinder	The fuel does not reach the cylinder. There is fuel in the exhaust	Carburetor	Get in contact with your distributor
			The fuel mixture is too rich.	Open the butterfly valve
				Clean or replace the air filter
	Sparks at the spark plug electrodes	no spark	Switch in "O" position	Place the switch in the ON (Run) position
Electric problem			Get in contact with your distributor	
switch locked			Get in contact with your distributor	
Engine cranks but stalls or doesn't accelerate properly	Air filter	dirty air filter	Normal wear	clean or replace
	Fuel filter	Dirty fuel filter	Dirt or debris in the fuel.	replace
	Spark plug	Dirty or worn spark plug	Normal wear	Clean, adjust or replace
The engine does not turn	N/A	N/A	internal engine problem	Get in contact with your distributor

## 9. WARRANTY

Millasur guarantees that if your product suffers from a manufacturing defect during the established guarantee period, contact or go to your point of sale.

Your purchase invoice must be kept as proof of the purchase date. Your tool must be returned to your dealer in an acceptable and clean condition, in its original molded case, if applicable to the unit, accompanied by your appropriate proof of purchase.



## 9.1. Warranty period

The legal warranty period for the product begins on the original date of purchase by the first initial buyer and its duration will be that established by the Royal Decree-Law for the protection of consumers and users in situations of social and economic vulnerability for the year corresponding to the time of purchase of the product.

Some countries do not allow limitations on how long an implied warranty lasts or do not allow the exclusion or limitation of consequential or incidental damages, in which case the above limitation and exclusion may not apply to you. This warranty gives you specific legal rights, and you may also have other rights which vary from state to state or country to country.

## 9.2. Exclusions

This warranty does not cover product damage or performance problems caused by:

- Natural wear and tear from use.
- Misuse, neglect, careless operation or lack of maintenance.
- Defects caused by incorrect use, damage caused by manipulations carried out by personnel not authorized by Anova or use of non-original spare parts.
- Defects of normal wear parts, such as bearings, brushes, cables, plugs or accessories such as drills, bits, saw blades, etc.
- Damage or defects resulting from abuse, accidents or alterations.
- Incorrect use and storage (explicit reference that the rules described in the operating instructions have not been followed).
- Customer wear (for example, broken saw blades, worn carbon brushes, etc.).
- Secondary wear and damage due to lack of maintenance, repair, lubricants (for example, damage from overheating due to blocked cooling slots, bearing damage as a result of dirt, frost damage, etc.)
- Damage as an obvious result of overuse/overloading.
- Damage caused by inappropriate supplies (eg wrong fuel)
- Load-induced failure of housing components or accessories due to abnormal stress
- Load-induced deformation of housing components or accessories due to abnormal stress.
- Damage resulting from the operation of supplies that are overfilled or leaking due to improper storage, in proper cleaning agents or other damaging chemicals.
- Damage due to improper exposure to extreme temperatures (for example, freeze fractures, thermal distortion of components, etc.)
- Damage from permanent exposure to ultraviolet radiation.
- Damage caused by improper maintenance.
- Any damage caused by non-compliance with the instruction manual
- Any product that has been attempted to be repaired by an unqualified professional.
- Any product connected to an inadequate power source (amps, voltage, frequency).
- Any damage caused by external influences (water, chemicals, physics, shock) or foreign substances.
- Use of inappropriate accessories or parts.
- It does not include defects of normal wear parts, nor does it cover damages or defects resulting from abuse, accidents or alterations, nor transportation costs.

Also, the warranty is void if the product has been altered or modified, or if the trademark/serial number on the machine has been defaced or removed.

Routine maintenance, tune-ups, adjustments or normal wear and tear are not covered under this warranty.

This manual does not cover all possible situations regarding warranty exclusions, for more information contact your nearest Anova dealer.

### 9.3. In case of incident

The guarantee must be correctly completed with all the information requested, and accompanied by the purchase invoice.

Anova reserves the right to deny any claim where purchase cannot be verified or where it is clear that the product was not maintained properly (maintenance, vents cleaned, lubrication, carbon brushes regularly maintained, cleaning, storage, etc.).

Private use is understood as personal domestic use by a final consumer. Instead, commercial use means all other uses, including uses for commercial, income-generating, or rental purposes. Once the product has been used for commercial use, it will hereafter be considered a commercial use product for the purposes of this warranty.

These are our standard warranty terms, but occasionally there may be additional warranty coverage not determined at the time of publication. For more information, contact your nearest official Anova distributor or by visiting [www.millasur.com](http://www.millasur.com).

Warranty service is only available through official Anova dealers. You can locate your nearest distributor on our distributor map at [www.anova.es](http://www.anova.es).

## 10. ENVIRONMENT

---

Protect the environment. Recycle the oil used by this machine by taking it to a recycling center. Do not pour used oil into drains, land, rivers, lakes or seas.



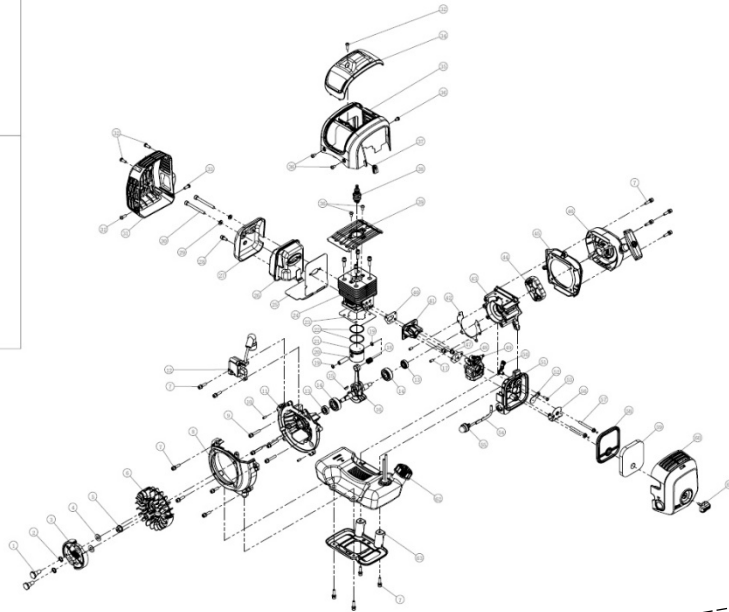
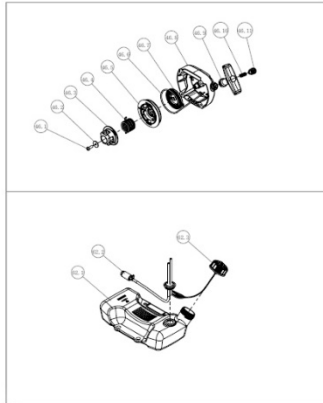
Dispose of your machine in an ecological way. We must not dispose of the machines together with the household waste. Its plastic and metal components can be classified according to their nature and can be recycled. The materials used to pack this machine are recyclable. Please do not dispose of the packaging in the household waste. Dispose of these packages at an official waste collection point.



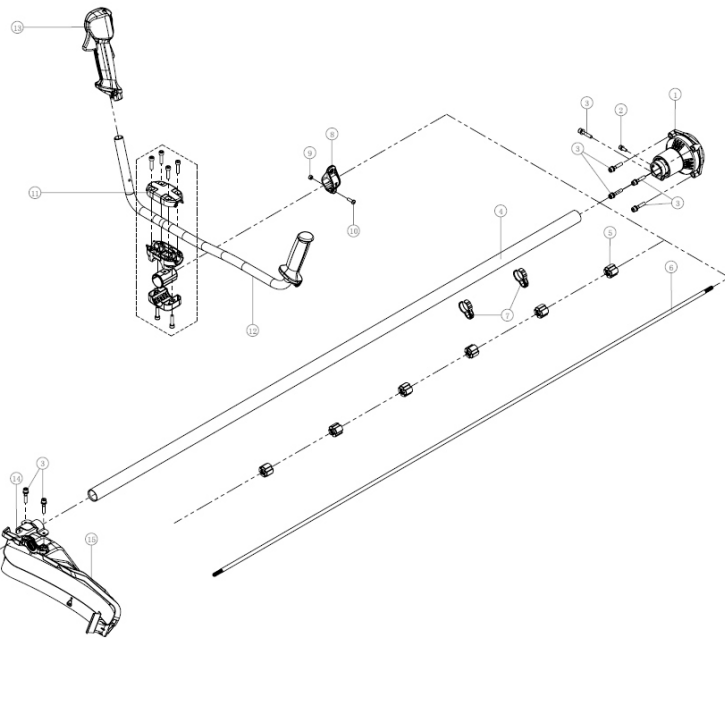
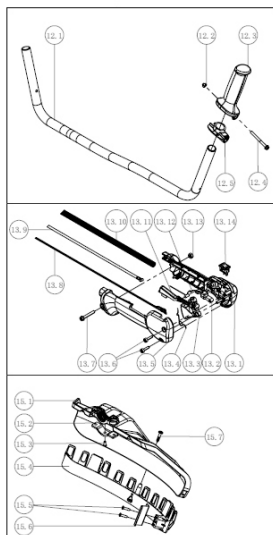
# 11. EXPLODED

## D536

A

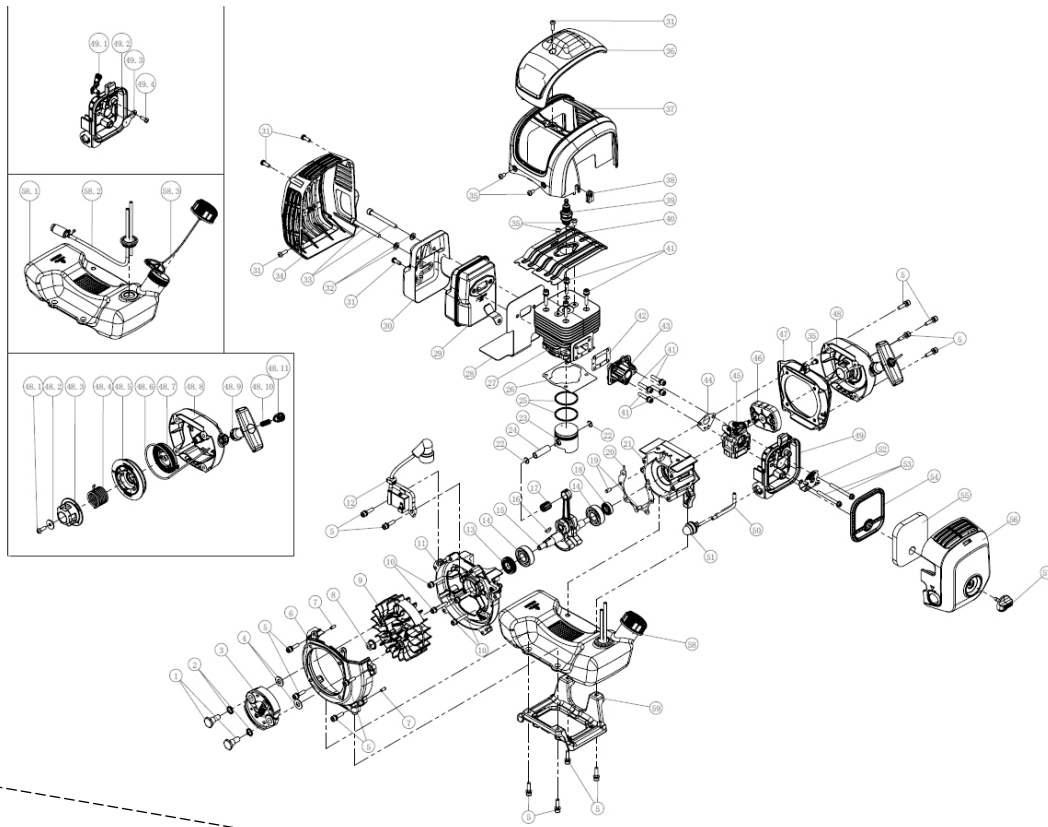


B

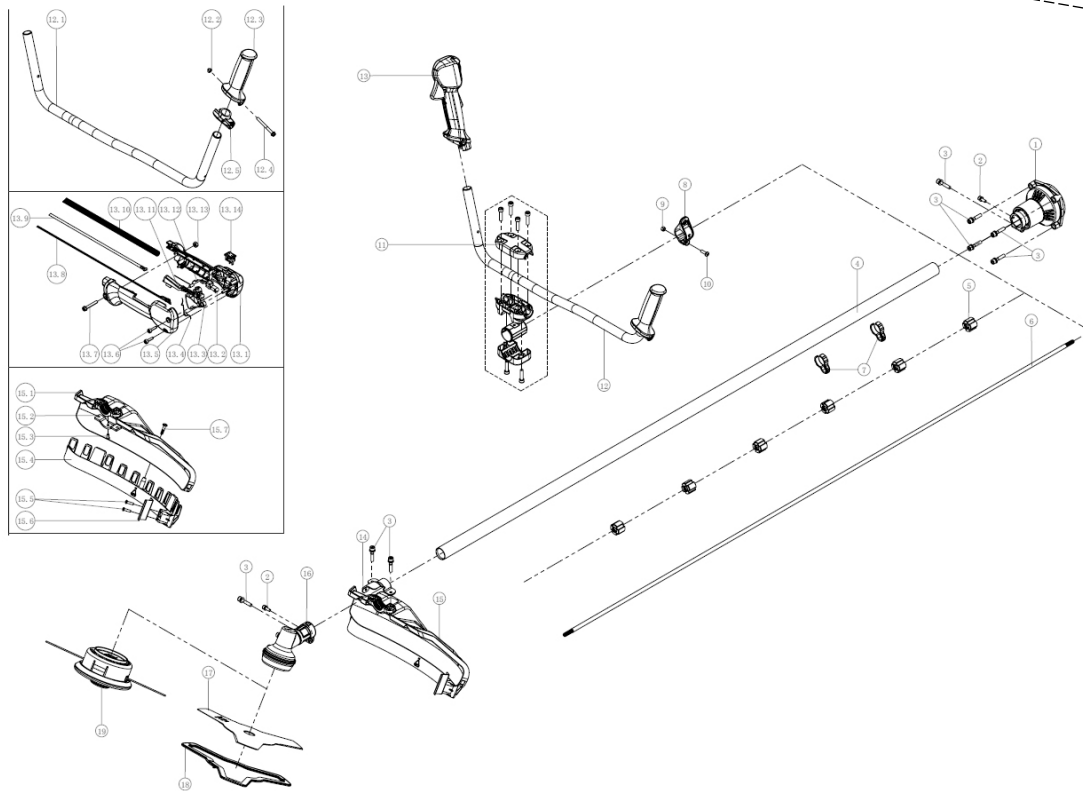


D545

A

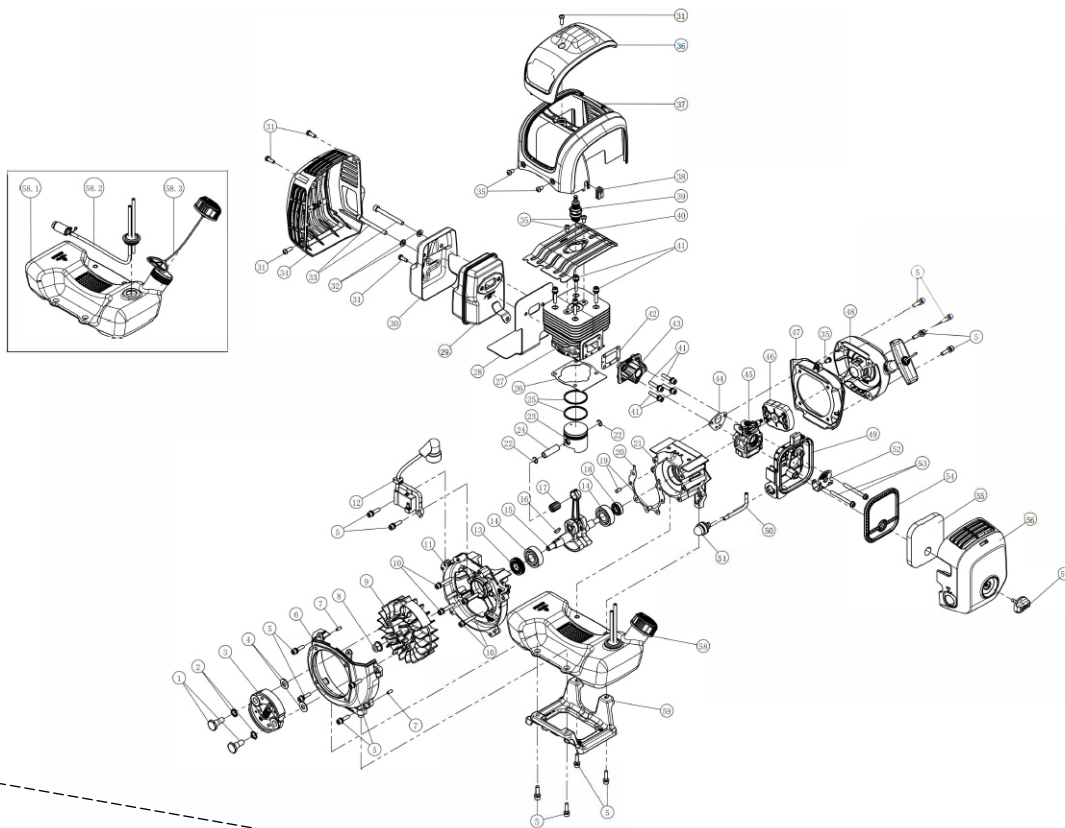


B

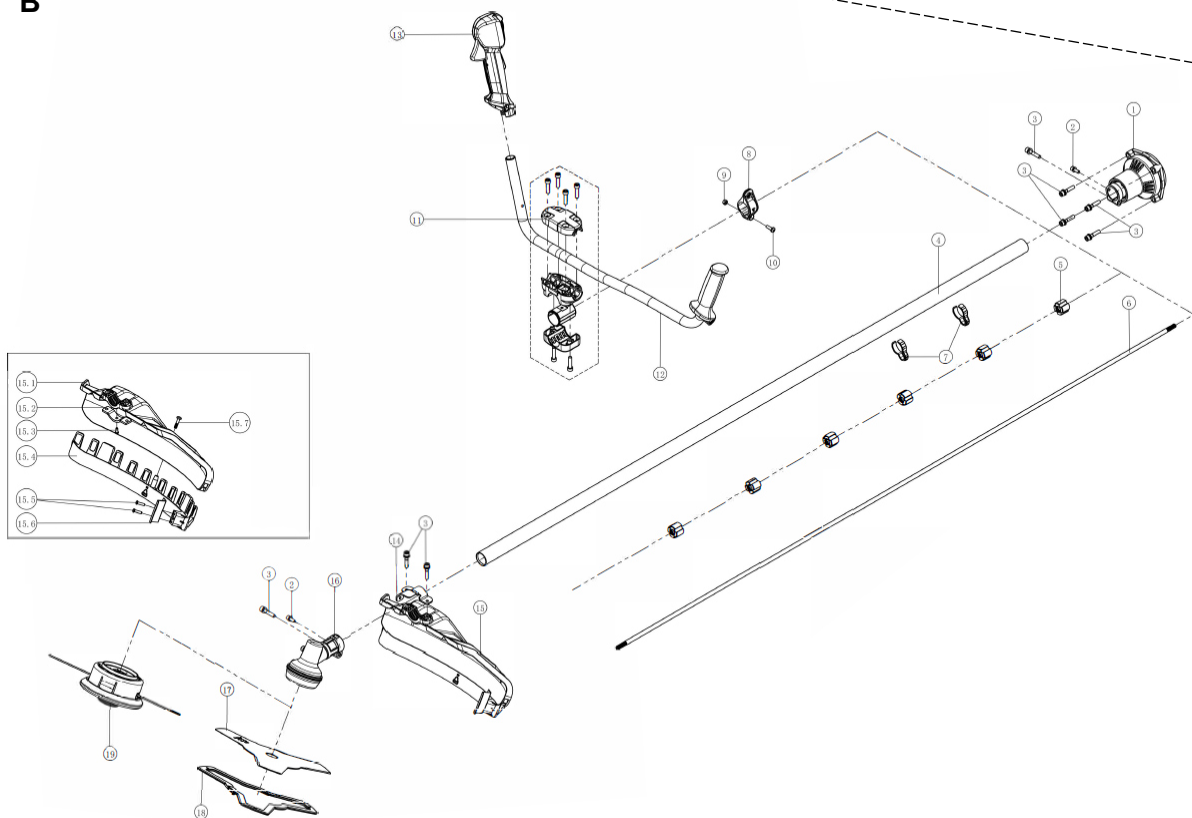


D553

A



B



## 12. CE CERTIFICATE

### DISTRIBUTION COMPANY

MILLASUR, SL  
 RUA EDUARDO PONDAL, Nº 23 PISIGÜEIRO  
 15688 OROSO - A CORUÑA  
 SPAIN



## EC DECLARATION OF CONFORMITY

In compliance with the different CE directives, this document confirms that, due to its design and construction, and according to the CE mark printed on it by the manufacturer, the machine identified in this document complies with the pertinent and fundamental health and safety requirements. of the aforementioned EC directives. This declaration validates the product to display the CE symbol.

In the event that the machine is modified and this modification is not approved by the manufacturer and communicated to the distributor, this declaration will lose its value and validity.

Machine name: BRUSH CUTTER

Model: **D536/D545/D553**

Recognized and approved standard to which it conforms:

**Directive 2006/42/EC**  
**2014/30/EU**  
**2010/26/EC**

Tested according to regulations:

**EN ISO 11806-1:2022**  
**EN ISO 14982:2009**  
**AfPS GS 2019:01 PAK, EK9-BE-27 (V2):2020**  
**EK9-BE-55 (V2):2020, EK9-BE-56 (V4):2020**  
**EK9-BE-98 (V2):2020, EN ISO 22868**

Company seal

**MILLASUR, S.L.U.**  
 Rúa Eduardo Pondal,23 - Pol.Emp..Sigüeiro  
 15688-Oroso-A Coruña  
 Tel.(+34) 981 69 64 65 - Fax (+34) 981 69 08 61  
 e-mail: [millasur@millasur.com](mailto:millasur@millasur.com)  
 CIF: B-15 749 922

09/12/2022