

Transport trolley

CR06300

ALNOVA®

Instructions and user manual



IN

Millasur S.L.U.
Rúa Eduardo Pondal, nº 23 - Pol. Ind. Sigüeiro
15688 - Oroso - A Coruña - 981 696 465 - www.millasur.com





Anova wishes congratulate him by have elected one of our products and you guarantees the assistance and cooperation that has always distinguished our brand over time.

This machine this designed for span many years and for be of great utility Yeah It is used according to the instructions contained in the user manual. We therefore recommend that you carefully read this instruction manual and follow all our recommendations.

For more information or questions, you can contact us through our web support at www.anova.es.

INFORMATION ABOUT THIS MANUAL

Lend attention to the information provided in this manual and in he apparatus by their safety and that of others.

- This manual contains instructions of use and maintenance.
- Take this manual with him when Oh to work with the machine.
- The contents are correct to the hour of the impression.
- The right to make alterations at any time is reserved without that this affects our legal responsibilities.
- This manual this considered part member of the product and has to remain with it in case of loan or resale.
- Request to his distributor a new manual in case of loss either damages.

READ SINCERELY THIS MANUAL BEFORE OF WEAR THE MACHINE



For ensure that his machine provide the best results, Read the usage and safety instructions carefully before using it.

OTHER WARNINGS:

A utilization incorrect could cause damages to the machine or to other objects.

Adapting the machine to new technical requirements could cause differences between the content of this manual and the product purchased.

Read and follow all the instructions of this manual. Failure to comply are instructions could result in serious personal injury.

INDEX

1. INSTRUCTIONS OF SECURITY
2. DESCRIPTION OF THE PRODUCT
3. SPECS TECHNIQUES
4. MOUNTING AND FUNCTIONING
5. MAINTENANCE AND CLEANING
6. SOLUTION OF ISSUES
7. WARRANTY
8. ENVIRONMENT
9. CERTIFICATE EC

1. INSTRUCTIONS OF SECURITY

1.1. Instructions of security

Important

Before of put in operation this product, read and follow the following instructions. To prevent injuries to you same and to third parties people, also has to continue the local preventative regulations.

Keep these instructions for future reference. This manual contains safety information to inform you about the hazards and risks associated with the product and how to prevent them. It also contains important instructions that must be followed during product setup, operation, and maintenance.

Is important that read and understand are instructions before of attempt operate this equipment. Make sure you are fully familiar with the controls and proper use of the product.

Throughout this manual, you will find notices that provide information about safety instructions and hazards that may cause personal injury and/or property damage. They include the Warning icon to indicate the probability and possible severity of an injury.

- Danger/Warning: indicates a danger that, Yeah No HE avoid, could provoke serious injuries .
- Important/Caution: Indicates a hazard yes I don't know avoid, could cause minor or moderate injuries.
- Note/Notice: indicates information considered important but No related with dangers.

For your safety, carefully read these operating instructions. Familiarize yourself with the controls and the correct use of the device. Failure to follow these instructions may result in damage. of security can provoke injuries serious either accidents mortals. Share these instructions for use with other users of the device.

Before to begin work: Make it staff qualified him show he management sure of the device.

Familiarize yourself first with he device in a land broad, open and flat.

1.1.1. Intended use

The machine only has to be used for he end provided! Any other use HE will consider a misuse .

To use the machine correctly, you must also respect and follow all safety regulations, assembly instructions, and operating and maintenance instructions set out in this manual.

All persons who use and maintain the machine must be familiar with this manual and must be informed about the possible risks of the machine.

The machine HE uses for:

He transport of goods inside of the ability of burden maximum allowed.

⚠ Warning

Removing or modifying safety components may cause equipment damage and serious injury

1.1.2. Conditions environmental

The machine can work in the following conditions:

- humidity: max. 70 %
- temperature: of +5 °C to +40 °C (of +41 °F to +104 °F)

The machine, especially the battery, should not be exposed to temperatures above approximately 80°C. Do not store it in direct sunlight or for extended periods in the trunk of a car.

uses :

- Is left over forbidden use the machine outside the technical limits indicated in this manual.
- This forbidden use the machine without the devices of protection supplied.
- It is forbidden to use the machine if it is not suitable for its intended use and is not certified.
- This forbidden use the machine Yeah No fulfills with the dimensions required.
- This prohibited any handling of the machine and their parts.
- This forbidden use the machine for any end distinct to the described in this user manual.
- No this permitted abandon he area of immediate work while are carried out the tasks.

1.2. Instructions of security

Any missing or illegible security labels must be replaced immediately.

Local laws and regulations may specify the minimum age of the operator and limit the use of this machine.

To avoid malfunctions, machine breakdowns and injuries, please read the following safety instructions.

1.2.1. General

- Use the machine only in suitable lighting conditions that ensure safe operation.
- Is left over forbidden work with the machine in case of fatigue, lack of concentration or under the effects of substances harmful to health.
- Caution on slippery surfaces: danger of slipping, risk of injury. During he job, use footwear resistant and non-slip. The slips, Trips and entrapments are a major cause of serious injury or death.

- The machine should only be operated by trained personnel (who know and understand this manual) and that No have limitations in their skills motors compared to conventional workers.
- Drive the machine with both hands.
- Unauthorized persons, especially children and untrained personnel, should be kept away from the operating machine.
- If you give the machine to a third party, these instructions must be included with the machine. Before putting it into operation, after a breakdown or damage, check the device and make sure it is in good working order.
- Take extra care when working near swimming pools or garden ponds. Never use the machine in the rain or in wet or damp areas. Disconnect the battery before any maintenance or adjustments!

1.2.2. Charger

- This charger is designed exclusively for charging the battery of this device. Charging other batteries is not permitted.
- No use never he charger in a around wet either wet.
- Disconnect the cable connections by pulling only on the plug. Pulling on the cable could damage it, So as to the plug, and the security electric already No would be guaranteed.
- Never use the charger if he cable, the plug or the The device itself is damaged due to external causes. Take the charger to the nearest repair shop.
- No use he apparatus near of sources of heat.
- No use a wire extension for feed the season of burden.
- Do not place metal objects near the charger's charging contacts. Do not open he charger. In case of fault, put in contact with a workshop specialized.
- Use only he charger original for recharge the battery. He use of Other chargers may cause defects or risk of fire.

1.2.3. Battery

- Improper use or use of damaged batteries that emit fumes. Go outside and seek medical attention if you experience discomfort. Fumes can irritate the respiratory tract.

Danger of fire

- Never load the batteries near of acids neither of flammable materials .
- Load the battery only to a temperature atmosphere included between 0°C and +40°C. Leave that HE cool after of a burden intense.

Explosive

- Protect the battery of the heat and from the fire.
- Use the battery only to a temperature atmosphere included between 0 °C and +45 °C.

Short circuit

- For disposal, transport or storage, the battery should be placed in a plastic bag or box, or the contacts should be covered with adhesive tape.
- No open never the battery.

1.3. Risks residuals

▲ Important

Even if it complies with the relevant product safety regulations, residual risks may exist given the characteristics of the equipment and the work for which it has been designed.

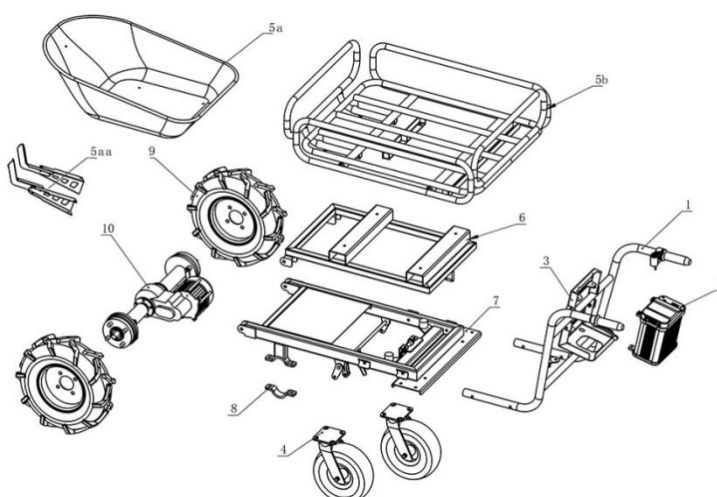
Despite the intended use, certain residual risks remain. Due to the machine's design and construction, hazardous situations may occur, which are identified as follows in these operating instructions:

A safety warning worded in this way indicates an imminent danger that, if not avoided, will result in death or serious injury.

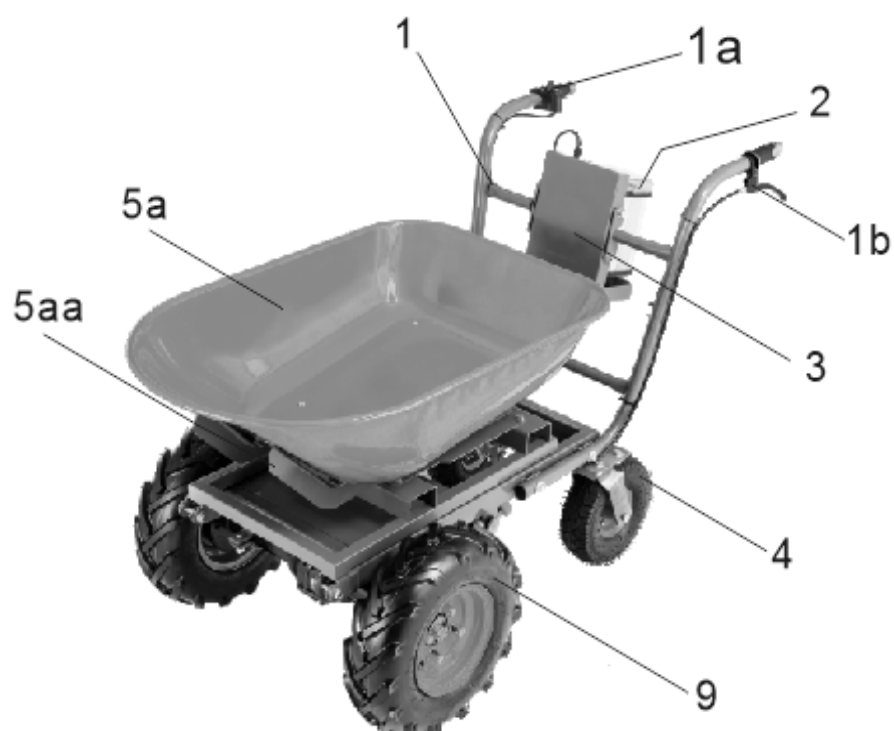
A safety indication of this type indicates a potentially dangerous situation that, if not avoided, could cause serious injury or even death.

Note: Although take measures preventive, they can exist risks residuals No obvious.

2. DESCRIPTION OF THE PRODUCT



No.	DESCRIPTION	UNITS
1	Puller set	1
2	Battery box	1
3	Battery case support	1
4	Rear universal wheel	2
5a	5th Tray (EWD300B)	1
5aa	5aa Tray Support	
5b	5b Tubular structure (EWD300B-T) -- Optional	
6	Tubular structure support	1
7	Main structure	1
8	Clamp	2
9	Front wheel	2
10	Drive motor assembly	1



CR06300			
1	Puller set	4	Rear universal wheel
1st	Engine control lever	5a	Base with tubular structure
1b	Mechanical brake	5b	Extendable side tubular structure
2	Battery box	9	Front wheel
3	Battery case support		

3. SPECS TECHNIQUES

Characteristics	
Nominal voltage	40V DC
Battery capacity	6 Ah
Maximum battery autonomy [h]	5 h
Engine power	400 W
Speed	Maximum speed in forward motion: 6 km/h; in reverse motion: 2 km/h
Maximum load capacity	300kg
Net weight	74 kg (EWD300B) 82 kg (EWD300B-T)
Dimension	1500x760x900mm (EWD300B) 1500x760x900mm (EWD300B - T)
Carry:	
Input voltage	110~240 V / 50~60 Hz / AC
Power	66 W
Exit	42 V
Charging time	3 h
Protection class	II
Battery:	
Nominal voltage	40 V
Battery capacity	6 Ah
Battery power	240Wh
Weight	1.8kg
Dimension	180x110x80

Note: By improvements in the design or changes in the specs, this manual can be modified without prior notice and without needing to change the document.

4. MOUNTING AND OPERATION

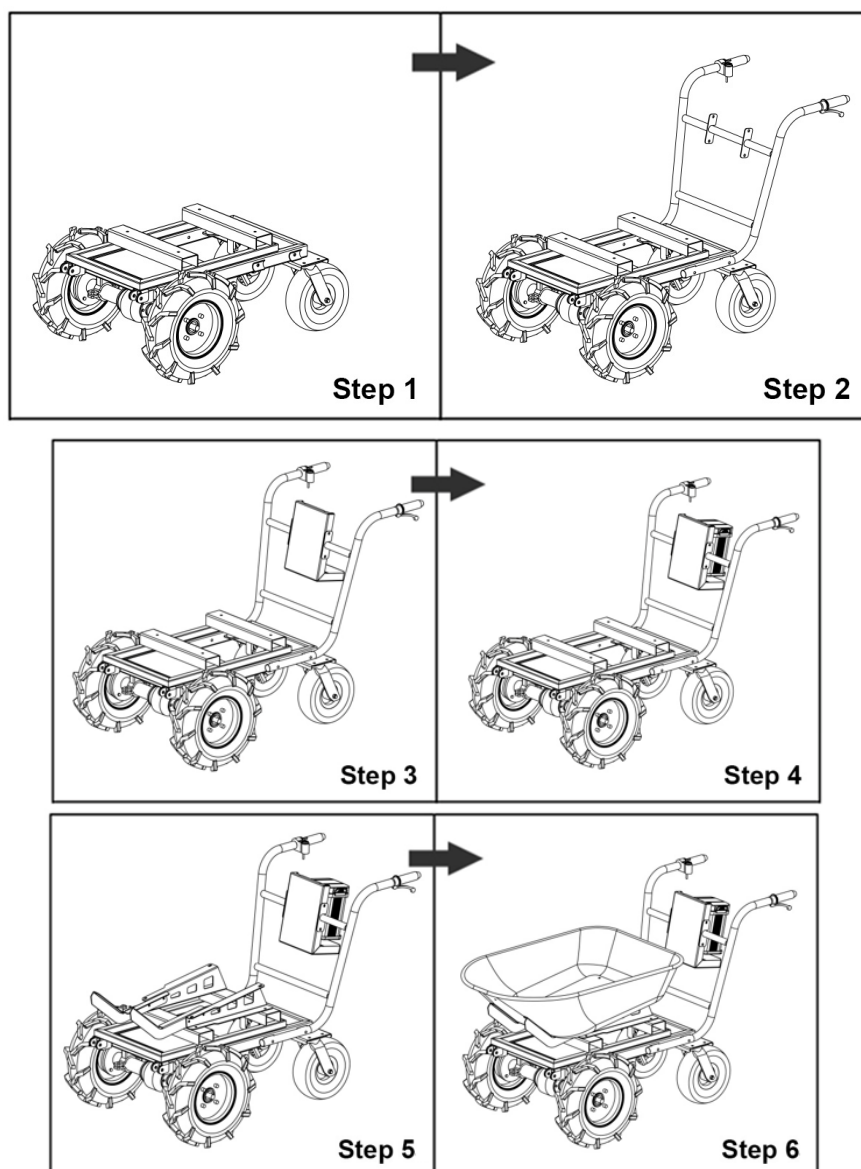
4.1. Mounting

Please check the contents of the product immediately upon receipt for any damage caused during transport or missing parts. Claims for transport damage or missing parts must be submitted immediately, after the reception initial of the machine and of its unpacking, before to put it into operation. Please understand that no claims submitted after this date will be accepted.

▲Warning

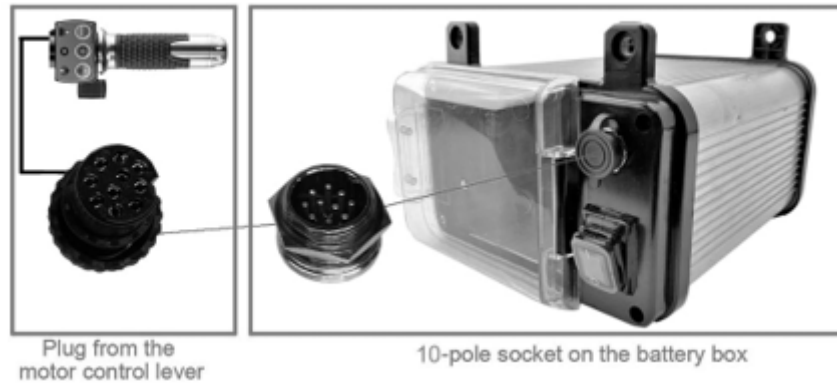
No tighten completely all the screws until that is finished he mounting.

4.1.1. Steps body assembly

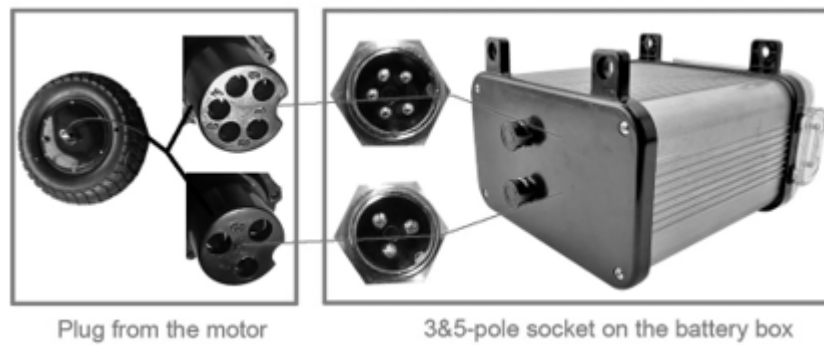


4.1.2 Steps cable assembly

Passed 1



Connect the motor cable

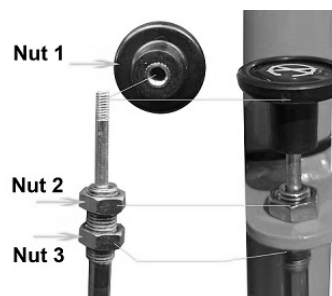


Warning ⚠ Only turn nut no. 1 to tighten or loosen the plug; turning nut no. 2 is prohibited, except in the case of professional repair.



Passed 2

A. Connect the lock and release cable of the unloading frame.

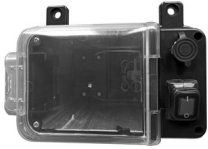



1. Remove nut 1 and nut 2
 2. Make sure the cable passes over the lock and release bracket, with nut 2 above the bracket and nut 3 below.
 3. Tighten nut 2 and nut 1
- B. Connect the mechanical brake on the left handlebar.



4.2. Operation

The device should only be used when it is in perfect working order. Visually inspect the device each time you use it. Pay particular attention to ensuring that the safety devices, electrical controls, electrical cables, and screw connections are undamaged and properly tightened. Replace any damaged parts before putting the device into operation.

	<p>1. Press the button on the battery box until it reads « 1:= ON (#7b).</p>
	<p>Lights #L4 (green), #L3 (green), and #L1 (green) are illuminated; lights #L2 and #L5 are off. Pressing throttle lever #1 will move the forklift forward. Pressing button #2 will illuminate lights #L4 and #L5; pressing throttle lever #1 will move the forklift backward. Pressing button #3 will illuminate light #L3, activate the brakes, and prevent the forklift from moving when throttle lever #1 is pressed. Pressing button #3 again will deactivate the EBS. Pressing button #4 will illuminate light #L2, and the forklift will operate in a lowercase "t" mode with increased power. Pressing button #4 again will return the forklift to Eco mode; this model has a longer battery life.</p>

Electronic braking system: This forklift is equipped with the EBS/BAS electronic braking system.

BAS ON	The EBS will only work when: 1. The button on the battery box is in the position " 1:= ON (#7b) " 2. Toggle switch #1 is in its original position, with no acceleration
EBS ON	The EBS will work only when 1. Button on the battery box is " 1:=ON (# 7b) " 2. Brake switch #3 at "1" position

1. . Warning:

- a. When the EBS is activated, the forklift will brake to a complete stop. Even if the thumb switch is pressed, the forklift will not move.
- b. When BAS is activated, the forklift will remain stationary on level ground, but can move slowly uphill.
- c. The BAS does not consume battery power, while the EBS does. Therefore, it is recommended to use the BAS most of the time.
- d. The two brakes mentioned provide comfort and safety while the forklift is on a slope or when unloading goods.

4.3. Battery

The charger is integrated into the battery system (No. 7).

Battery charging:

1. Connect the charger to the 230V/50Hz AC power outlet and to the charger plug.
2. Charge the battery.
3. Once the battery is fully charged (indicator on the charger), you can unplug it.

LED indicator on the control element:

The voltage display on the battery box indicates the battery status.

Battery voltage display:

The voltage indicator shows 42V.	Battery capacity: 100%
The voltage indicator shows 36V	Battery capacity: ~50%
The voltage indicator shows <30V	Please charge the battery (it has very little capacity).



- #1 Voltage indicator switch
- #2 Voltage Indicator
- #3 Charging port

5. MAINTENANCE AND CLEANING

5.1 Maintenance

⚠ Danger

Disconnect the battery before of carry out any task of maintenance either adjustment. Risk of serious injuries due to the unintentional or automatic activation of the machine.

The machine does not require extensive maintenance. In case of breakdowns or defects, it should only be repaired by qualified personnel.

⚠ Danger

Clean the machine regularly after each use: this prolongs its lifespan and is a requirement to ensure a safe working environment.

The repairs only must be carried out by professionals duly formed.

- Check periodically he state of the labels of security. Replace them Yeah It is necessary.
- Check periodically he state of the machine.
- Save the machine in a place closed and dry.

Plan maintenance

After each work shift: Check the cables (that they are properly secured and undamaged).

5.1.1. Cleaning

⚠ Danger

The use of certain products containing ingredients harmful to metal surfaces, as well as the use of abrasive products, will damage the machine's surface.

- Clean the surface of the machine with a damp cloth soaked in a mild solution.
- Never use water current neither a pressure washer for clean the machine.
- Clean the parts exteriors with a sponge wet.
- Never clean the parts electronics with water.
- Check the machine and eliminates the deposits I waste with a brush.

5.1.2. Storage

- Clean to background all the components before of save them.
- Store all components separately in a dry place at a temperature no lower than -10 °C.
- Burden completely the battery before of save it.

⚠ Danger

In case of inactivity prolonged, and as minimum to the cape of a month, recharge the battery.

6. SOLUTION OF ISSUES

The following board contains the issues further frequent and his solution. Yeah arise If you have any further problems, please contact your nearest authorized service center.

Note: Yeah No can solve the issues of the product, put in contact with his distributor official.

Before of begin to work for solve the defects, disconnect the battery.

Problem	Possible cause	Resource
Without electricity supply	The battery No this loaded	Recharge the battery
	He engine HE ha stuck	Find out he engine
	He switch of on this damaged	Find out he switch
	Cables broken either loose	Find out the cables
The battery No It loads	Loosen up he wire	Check the connection of the wire

Note : If you have any questions or problems persist after performing the above operations, please contact your official distributor.

7. WARRANTY

If your product suffers some defect If the product fails to manufacture during the established warranty period, please contact or go directly to your point of sale with the necessary documentation.

Your purchase receipt should be kept as proof of the purchase date. Your tool must be returned to your distributor in acceptable and clean condition, in its original molded case, if applicable, along with your corresponding proof of purchase.

7.1 Period of warranty

The legal warranty period for the product begins on the original date of purchase by the first initial buyer and its duration will be that established by the Royal Decree-Law on the protection of consumers and users against situations of social and economic vulnerability of the year corresponding to the time of acquisition of the product.

Some countries They do not contemplate limitations in as for the duration of a guarantee This warranty does not allow for the exclusion or limitation of consequential or incidental damages, in which case the above limitation and exclusion may not apply to you. This warranty gives you specific legal rights, and you may also have other rights that vary from state to state or country to country.

7.2 Exclusions

This warranty No covers damages to the product either issues of performance caused by:

- Wear natural by use.
- Evil use, negligence, operation careless either lack of maintenance.
- Defects caused by a use incorrect, damages caused due to manipulations carried out by personnel not authorized by Anova or use of non- original spare parts.
- Defects in normal wear parts, such as bearings, brushes, cables, plugs or accessories such as drills, drill bits, saw blades, etc.

- Damages either defects resulting of abuse, accidents either alterations.
- Use and storage incorrect (reference explicit of that No HE they have compliment the rules described in the operating instructions).
- Wear and tear caused by the customer (e.g., broken saw blades, consumed carbon brushes, etc.).
- Wear and secondary damage due to lack of maintenance, repair, lubricants (e.g., overheating damage due to blocked cooling slots, bearing damage as a result of dirt, frost damage, etc.)
- Damages as result obvious of the use excessive / overload.
- Damages caused by supplies inappropriate (e.g., fuel incorrect)
- Rip induced by the burden of the components either accessories of the casing due to an abnormal tension
- Load-induced deformation of the housing components or accessories due to abnormal stress.
- Damage resulting from the operation of supplies that are overfilled or leak due to improper storage, improper cleaning agents, or other damaging chemical components.
- Damage due to improper exposure to extreme temperatures (e.g., frost cracking, thermal deformation of components, etc.)
- Damages by exposure permanent to the radiation ultraviolet.
- Damages produced by a maintenance inappropriate.
- Any damage caused by he breach of the manual of instructions
- Any product that is attempted be repaired by a professional No skilled.
- Any product connected to an unsuitable power source (amps, voltage, frequency).
- Any damage caused by external influences (water, chemicals, physical, impacts) or foreign substances.
- Use of accessories either parts No appropriate.
- No includes defects of parts normal of wear, neither covers damages either defects resulting from abuse, accidents or alterations, nor transport costs.

In addition, the warranty is left over annulled Yeah he product ha been altered either modified, either Yeah The trademark/serial number of the machine has been defaced or removed.

Maintenance of routine, the putting to spot, the settings either he wear normal No are covered under this guarantee.

This manual does not cover all possible situations regarding warranty exclusions. For more information, please contact your nearest Anova distributor.

7.3 In case of incidence

The warranty has to go correctly completed with all the data requested, and accompanied by the purchase invoice.

Anova reserves the right to refuse any claim where the purchase cannot be verified either when this clear that he product No was kept correctly

(maintenance, clean ventilation slots, lubrication, regularly maintained carbon brushes, cleaning, storage, etc.).

Private use is understood to mean personal domestic use by an end consumer. Commercial use, on the other hand, means all other uses, including uses for commercial purposes. of generation of income either rent. A time that he product is been used for use commercial, will be considered in forward as product of use commercial to the purposes of this guarantee.

These are our standard warranty terms, but occasionally there may be additional warranty coverage not specified at the time of publication. For more information, put in contact with his distributor official of Anova further nearby either by visiting www.millasur.com.

Warranty service is only available through authorized Anova distributors. You can find your nearest distributor on our distributor map at www.anova.es.

8. MEDIUM ATMOSPHERE



Is fundamental guarantee that the products and their components be discarded of responsible ways to protect the environment. Below, you can find general guidelines for the correct elimination of various materials, of be used in his machine.

Get rid of of his machine of manner ecological. No must get rid of of the machines along with household waste. Their plastic and metal components can be sorted according to their nature and recycled.

When disposing of machinery or metal products, it is important to consider that their components... metal, like iron, steel or aluminum, they must be Properly recycled at metal recycling facilities. This will contribute to the possibility of reusing them in the manufacture of new products.

Oils and Fuels

The oils used and the fuels, between others, must be recycled properly. Do not spill these liquids in drains, soils, rivers, lakes neither seas, already that they can cause serious damage to the half atmosphere. Direct them to a center of recycling either spot of collection specialized. This process aid to avoid the pollution of the water and he floor, and to re-use, of be if possible, the oils safely.

Plastics

Plastics should be separated and taken to designated recycling points. Do not throw them away with regular household waste. Plastics can be recycled, helping to reduce waste.

Cardboard

Packaging materials, such as cardboard, are Recyclable. Make sure to separate clean, dry cardboard and place it in the designated recycling containers or at an official waste collection point. Do not dispose of it with household waste.

Batteries

The batteries, batteries and others components electronics of the machines must be discarded at points of specific collection to prevent the release of substances Toxic in the environment. Do not throw them away with regular trash. Take them to appropriate recycling centers for safe and responsible handling.

By following these guidelines, contributes to the protection of the environment and Resource conservation. For more information on disposal and recycling of the material, contact your local authorities and consult the necessary information.

9. CERTIFICATE EC

COMPANY DISTRIBUTOR

MILLASUR, SLU

RUA EDUARDO PONDAL, No. 23 PISIGÜEIRO

15688 OROSO - A CORUÑA

SPAIN



STATEMENT OF ACCORDANCE EC

In compliance with the different directives EC, in the present HE confirms that, due to Based on its design and construction, and according to the CE marking affixed by the manufacturer, the machine identified in this document complies with the relevant and fundamental health and safety requirements of the aforementioned CE directives. This declaration authorizes the product to display the CE marking.

In the event that the machine is modified and this modification is not approved by the manufacturer and communicated to the distributor, this declaration will lose its value and validity.

Denomination of the machine: **FORKLIFT TRUCK OF TRANSPORT**

Model: **CR06300**

Tested of agreement to regulations:

EN IEC 61000-6-1:2019

EN 61000-6-3:2007+A1:2011+AC:2012

EN IEC 61000-3-2:2019

EN 61000-3-3:2013+A1:2019

Company seal

MILLASUR, S.L.U.
Rúa Eduardo Pondal, 23 - Pol. Emp. Sigüeiro
15688-Oroso-A Coruña
Tel. (+34) 981 69 64 65 - Fax (+34) 981 69 08 61
e-mail: millasur@millasur.com
CIF: B-15 749 922

09/02/2026

