

Instructions - User Manual

**WATER PUMP**

**BE1300P**



**ALOVA<sup>®</sup>**

Millasur, SL.  
Rua Eduardo Pondal, No. 23 - Pol. Ind. Sigüeiro  
15688 - Oroso - A Coruña 981 696 465 [www.millasur.com](http://www.millasur.com)



**ANOVA** Thank you for having chosen one of our products and guarantees the assistance and cooperation that has always distinguished our brand over time.

This machine is designed to last many years and to be very useful if used according to the instructions in the manual. We recommend, therefore, read this manual and follow all our recommendations.

For more information or questions you can contact through our web media such as [www.anovamaquinaria.com](http://www.anovamaquinaria.com).

## **INFORMATION ON THIS MANUAL**

Pay attention to the information provided in this manual and on the device for their safety and that of others.

- This manual contains instructions for use and maintenance.
- Take this manual with you when you go to work with the machine.
- The contents are correct at the time of printing.
- the right to make changes at any time without affecting our legal responsibilities are reserved.
- This manual is considered an integral part of the product and must stay with this in case of loan or resale.
- Ask your dealer for a new manual in case of loss or damage.



### **READ THIS MANUAL BEFORE CAREFULLY USING THE MACHINE**

To ensure that your machine will provide the best results, read the rules of use and safety carefully before using.

### **OTHER WARNINGS:**

Improper use may cause damage to the machine or to other objects.

Adapting the machine to new technical requirements could cause differences between the contents of this manual and the purchased product.

Read and follow all instructions in this manual. Breaching these instructions could result in personal injury

# **INDEX OF CONTENTS**

- 1. Applications**
- 2. Technical data**
- 3. Safety Precautions**
- 4. Identification of parts**
- 5. Installation**
- 6. Start-up and maintenance**
- 7. Troubleshooting**
- 8. Disposal and recycling machine**
- 9. Warranty conditions**
- 10. Despiece**
- 11. CE**

This machine can be used by children 8 and older and people with physical, sensory or mental capabilities or lack of experience and knowledge if they have been given supervision or instruction concerning use safely and understand the dangers supone.Los children should not play máquina.La cleaning and maintenance of the machine must always be performed by qualified personnel.

Attention! If the machine or the power cord is damaged, they must be repaired by the manufacturer, its service agent or a person qualified before continuing use.



Do not dispose of this machine as if generic junk, use separate collection facilities and licensed in your area for proper treatment. Contact local authorities for information on the collection points available.



Before installation, you should carefully read this manual and heed the warnings and safety instructions in this manual.

The manufacturer is not responsible or liable to take responsibility for personal injury, damage to the pump and yield losses in the machine caused by violation of safety precautions in this manual.

## 1. Applications

It is applicable to domestic water supply, equipment support, pressurization pipes, irrigation and fumigation of gardens, irrigation of vegetable greenhouses, breeding, industrial and mining supply and drainage water business buildings, high-rise, central air conditioning circulation system and central heating. etc. Transferencia clean water and other non-corrosive liquids with low viscosity; invalid transport of flammable liquids, explosives, and gasified liquids containing solid particles or fibers. The pH liquid must be within 6.5-8.5.

Observation:

This pump could become a automatic water pump, which is configured through an external automatic plant which comprises a pressure switch, a pressure tank, etc. The characteristics of the function of automatic pump are as follows: when the power is on, open the tap and the pump will start automatically; When the tap is closed, the pump stops automatically. If a water tower along used with automatic pump, connect to the upper limit switch and the pump start or stop working with the water level in the water tower automatically.

## 2. Technical data

### **Model: BE1300P**

Motor power: 1300W

Max flow: 83 L / m

Output max height: 48 m.

Start pressure: 1.8 bar

Off pressure: 3.2 bar

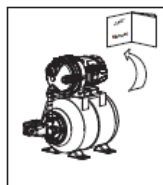
Max suction height 8 m

Clase Insulation IPX4

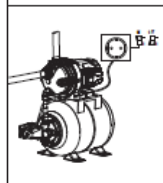
Clase protection F

Max working temperature: + 40°C

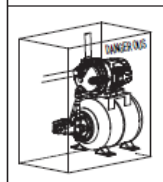
### 3. Safety Precautions



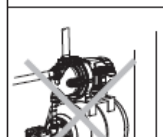
1). To ensure the normal and safe operation of the electric pump, read the manual carefully before using.



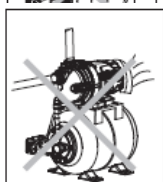
two). The electric pump must have a safety ground to prevent short circuits; For safety, the leakage protection switch must be equipped and be careful not to wet the power plug; the plug must be connected in an area moistureproof.



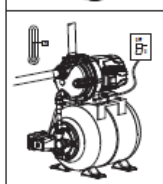
3). Do not touch the electric pump while working; , Wash not swim near the work area or allow livestock from entering the water to avoid accidents.



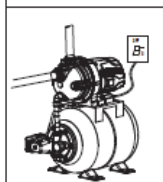
4). Avoid splashing water pressure to avoid electric pump and the pump is immersed in water.



5). Keep the pump in a ventilated area.



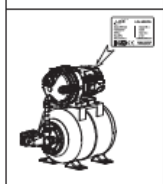
6). If the ambient temperature is less than 4°C or if the pump is not used for a long time, drain the liquid from the pipe system to prevent ice formation in the pump chamber. Do not keep the pump running dry for long.



7). The pumped liquid may be hot and under high pressure. Before moving and disassembling the pump, the valves on both sides of the pump must be closed first and then empty the liquid in the pump and pipes.

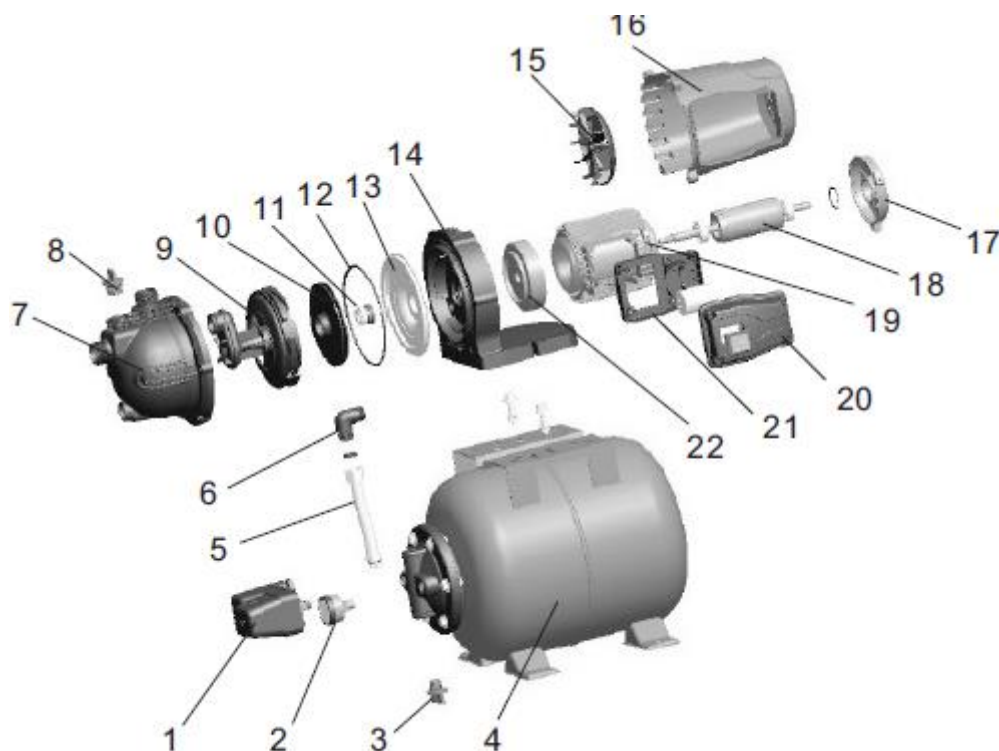


8). Do not transfer any flammable, explosive or gasified liquid that exceeds the stipulation of the pump.



9). The power supply must agree with the voltage indicated on the nameplate. Keep pump in a dry, airy and cool at room temperature for prolonged storage.

## 4. Identification of parts



1. Pressure switch
2. Manometer
3. Drain plug
4. Tank
5. Flexible hose
6. Elbow connector
7. Pump body
8. Filler cap
9. Diffuser
10. Driving
11. Mechanical seal

12. O-ring
13. Cover
14. Motor flange
15. Fan
16. Engine cover
17. endplate
18. Rotor
19. stator
20. Cover Switch
21. Leadframe
22. faceplate

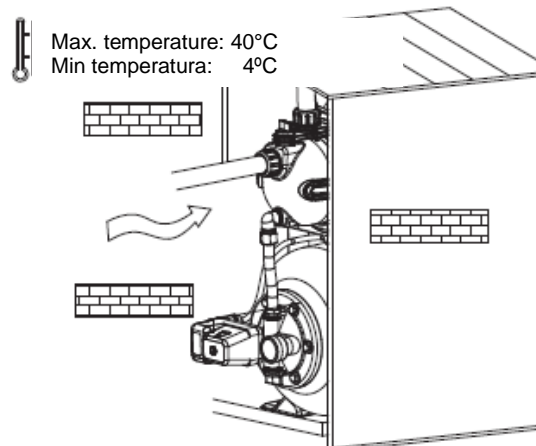
## 5. Installation



This product must be installed and maintained by a qualified person competent in handling the máquina. La installation and operation must be in accordance with local regulations and operating criteria reconocidos. Instale the pipes correctly according to requirements these instructions and protect them from freezing.

1. For the installation of the pump, the inlet tube should be as short as possible with fewer turns. The pump must be installed in ventilated, dry environment. It can be installed on the outside, provided you have adequate cover to avoid rain and wind.

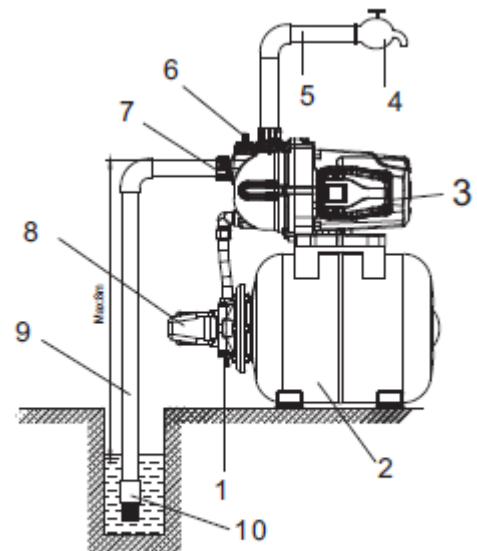
2. For use of the pipe, the valves must be installed in



the inlet and outlet and the inlet pipe must be installed with the check valve.

## TO: Connection scheme

1. Drain plug
2. Tank
3. Electric pump
4. Tap water
5. Spout
6. Filler Plug
7. Tie
8. Pressure Switch
9. Inlet pipe
10. Footvalve

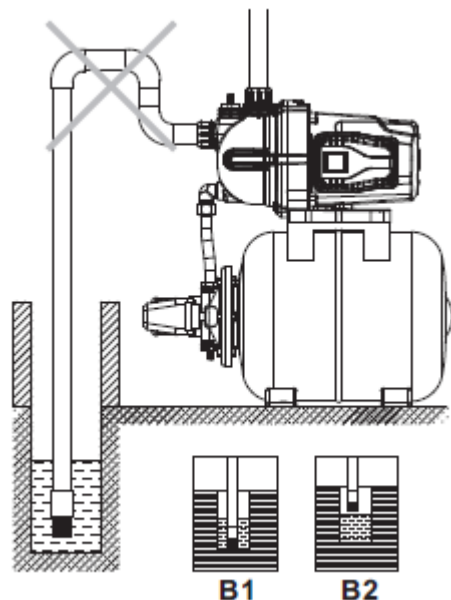


correct installation

**A**

Improper installation

**B**



1. While installing the electric pump, do not use a rubber tube too soft to the inlet pipe, preventing it from being sucked.
2. The foot valve must be placed vertically and installed 30 cm from the bottom of the water to avoid sucking sand and stones (B2);
3. Seals the inlet pipes should join with few elbows, may cause can not be sufficiently suck up water flow.
4. The diameter of the inlet tube should be less according to the water inlet, to avoid excessive loss of water that influence the performance of the outlet.
5. Pay attention to the fall of the water level during use, the foot valve must not be above the surface of the water (B1).
6. If the inlet pipe is longer than 10m or lifting height exceeds 4m, the pipe diameter should exceed the diameter of the water inlet of the pump.

7. Make sure the pumping is not affected by the pressures of the pipe while installing pipes.

8. The filter must be installed in the inlet pipes to prevent solid particles from entering the electric pump.

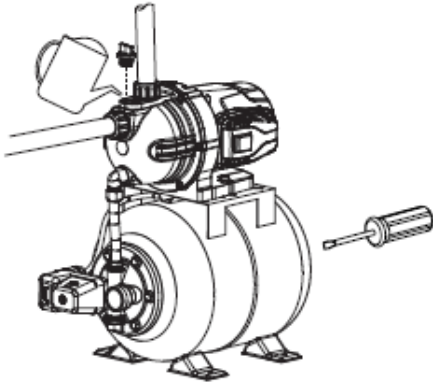
## C: Installation precautions outlet pipe.

The diameter of the outlet pipe should be less according to the water outlet, to reduce to the minimum the voltage drop, high flow and noise.

## 6. Start-up and maintenance



Do not start the pump if the pump chamber is not completely filled with water. No touch the electric pump unless cut pump power for more than 5 minutes. No remove the hood of the pump unless water the pump chamber is completely drained.



Move the fan with a screwdriver to check whether the pump rotates loosely and easily before starting. Remove the filler cap and prime the pump chamber thoroughly with clean water, then screw the filler cap. Keep the valve open during startup. When the pump operates normally, adjust the valve to the required flow (the flow rate and height shown in nameplate).

Note:

1. The pump chamber must be filled with water before the first use and recharge water is unnecessary in the future.
2. If not then water having started for more than 5 minutes with full water is discharged, turn off the electric pump, refill water or check whether the inlet pipe is leaking.
3. If frost damage and ice, open the drain plug to drain the water in the pump chamber. When re-start the pump, open the drain plug, fill with water and squeeze it and then you can use the pump.
4. If it is not used for a long time, you must empty the water pump.
5. The pump body, the impeller and the carrier must be cleaned and coated with anticorrosive oil before placing in a ventilated and dry for use.
6. If the pump stops for a long time, turn it on again according to the above diagram.
7. In summer or when the ambient temperature is high, pay attention to ventilation, avoid dew on the electrical parts that will cause power failures.
8. If the engine is hot or is abnormal, cut the power immediately and check the faults according to the following table.



## 7. Troubleshooting



Check the pump only after the cut is off and the power supply.

issue	probable cause	Required action
The engine can not be started.	Single phase power (three-phase electric motor): a. poor connection of the power switch; b. the fuse is blown; c. loose power cable; d. phase failure of the cable	to. contact repair or replace the circuit breaker switch; b. replace the safety fuse; c. check and tighten the power connector; d. repair or replace cables.
	The condenser is burned	Replace with the same type of capacitor (send maintenance point for repair).
	The rotary shaft and bearing are stuck.	Replace the bearing (send maintenance point for repair).
	The impeller is jammed.	Turn the rotating shaft of the fan terminal with a screwdriver to rotate freely allow or disassemble the pump body to remove debris.
	Motor wiring is damaged.	Replace winding (send maintenance point for repair).
	Line pressure above the set pressure of the pressure switch (automatic pump).	Increase pressure cutting power pressure switch, ie turn the screw nut variable in the "+" direction one or two turns, or replace it with a more suitable product.
The motor is running but no water is discharged.	Incorrect direction of rotation of the pump.	Invest biphasic motor cables (three phase motor).
	The pump is not completely filled with water.	Refill the pump with water.
	The impeller is damaged.	Replace the impeller (send it to the point of maintenance for repair).
	Drain suction pipe.	Check sealing various pipe joints input.
	The water level is very low.	Adjust the height of the pump installation.
	Freezing caused by water accumulated in the pipe or the chamber.	Start the pump after the ice melts.
underpressure	Wrong type of pump.	Select the appropriate pump.
	The inlet pipe is too long or too curved, the diameter of the pipe is not appropriate.	Apply the pipe diameter and shorten stipulated inlet pipe.

	The inlet pipe, screen filter or pump chamber are blocked by foreign materials.	Clean pipe, the foot valve or the pump chamber, clean debris.
The vibrating pump.	The pump is fixed on the base.	Tighten the bolt base.
	Debris in the pipe or the pump chamber.	Check and clean the pipe and the pump body.
	The base is not stable enough.	Set the pump to the stable base.
The engine operates intermittently or winding motor burnt.	The engine is overloaded operation for a long time.	Install the valve in the output, reduce water yield.
	The impeller is jammed or overloaded for a long time.	Clean debris in the pump chamber; Operate the pump below the nominal flow as much as possible.
	Improper grounding, broken wire or electric pump has been struck by lightning.	Look for the reason and replace the coils of the motor. Check with your service center.
Mechanical seal leak	The mechanical seal is worn and torn by impurities.	Clean or replace the mechanical seal.
Abnormal pump noise.	Bearing noise.	Replace with the same type of bearing.
	The impeller is jammed.	Remove debris and dirt.
	Delivery head inappropriate and excessive.	Set to the range shown on the nameplate before use.
The switch does not work or pressure starts-stops too frequently	The pressure is too low within the tank.	Check and adjust the pressure between 1.4-1.6bar
	The pressure is too high within the tank.	

## 8. Disposal and recycling machine



Get rid of your appliance in an ecological way. We should not get rid of the machines together with household garbage. Plastic components and metal can be classified according to their nature and recycled. The packaging materials used in this machine are recyclable. Please do not throw packaging in the household rubbish.

Pull these packages in an official waste collection point.

## 9. Warranty conditions

- The warranty period (1999-1944 CE Act) under the terms described below is 2 years from the date of purchase on parts and labor against defects in workmanship and material.

The warranty does not cover in any case: - Natural wear and tear.

- misuse, neglect, careless operation or lack of Maintenance.- Defects caused by misuse, damage due to manipulations by unauthorized personnel by Anova or use of non-original spare parts.

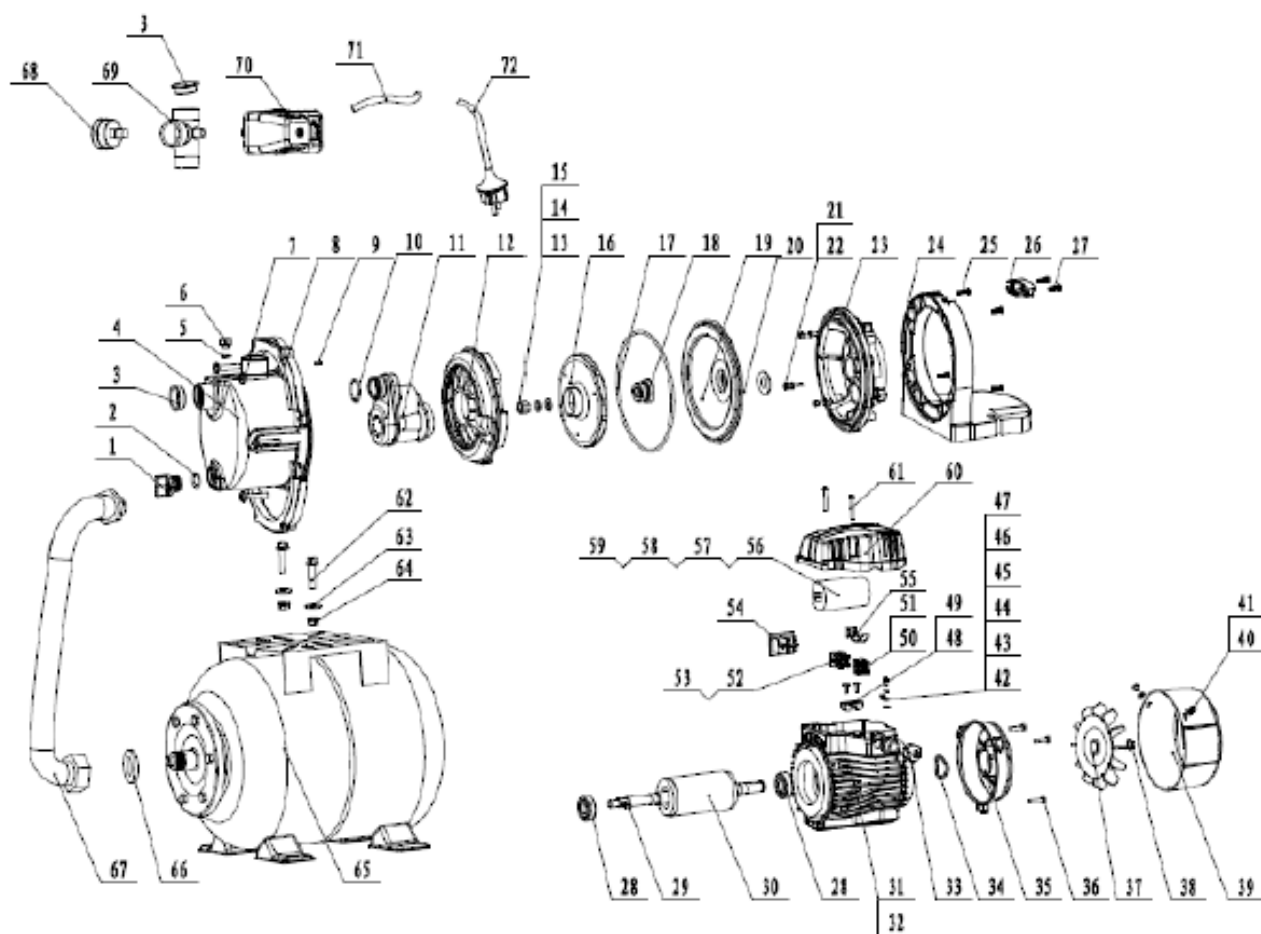
-The guarantee ensures service coverage in all cases correspond, if it is well accompanied by their respective machine purchase invoice and be managed through a Anova authorized center.



### ATTENTION!

TO ENSURE MAXIMUM PERFORMANCE AND SAFETY READ THE INSTRUCTION BOOK CAREFULLY BEFORE USING.

## 10. Parts



## 11. CE certificate

### DECLARATION OF CONFORMITY (CE)

#### DISTRIBUTION COMPANY

Millasur, SL  
RUA EDUARDO PONDAL, No. 23 PISIGÜEIRO  
15688 OROSO - A CORUNA  
SPAIN



### DECLARATION OF CONFORMITY CE

In compliance with the different EC directives, hereby confirms, because of its design and construction, and according to CE mark printed by the manufacturer on it, the identified machine that complies document with the relevant requirements and basic safety and health of the directives EC. This statement validates the product to display the CE symbol.

In the event that the machine is modified and this modification is not approved by the manufacturer and communicated to the distributor, this declaration loses its value and effect.

Name of machine: WATER PUMP

Model: **BE1300P**

Standard as valid:

**IEC / EN 60335-1 / IEC / EN 60335-2-41 / 2014/35 / EU**

Isolation type: F

Company seal

**millasur**  
Rúa Eduardo Pondal, nº 23  
Pol. Ind. Sigüeiro - 15688 Oroso - A Coruña  
Tlf. 981 696465 / Fax. 981 690861

A handwritten signature in black ink, appearing to be 'P. Pondal', is written over the company seal area.

04/11/2019

**ALNOVA®**