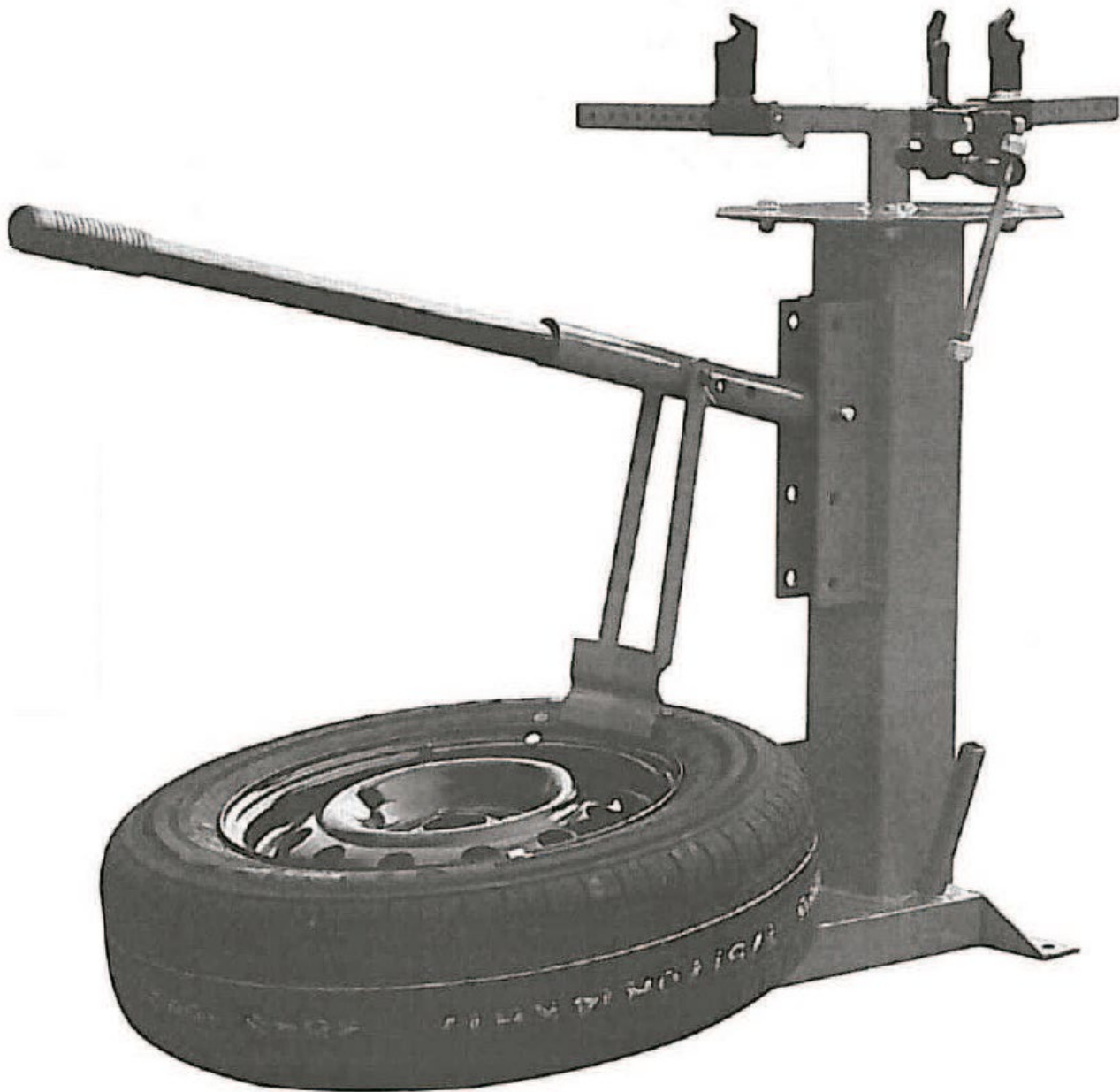


Tire mounting-dismounting machine

99-556

ANOVA

Instructions and user manual



EN

Millasur SL
Rúa Eduardo Pondal, nº 23 - Pol. Ind. Sigüeiro
15688 - Oroso - A Coruña - 981 696 465 - www.millasur.com



CE



Anova wishes to congratulate you for choosing one of our products and guarantees the assistance and cooperation that has always distinguished our brand over time.

This product is designed to last for many years and to be of great use if used in accordance with the instructions contained in the user manual. We therefore recommend that you read this instruction manual carefully and follow all our recommendations.

For more information or doubts, you can contact us through our web supports such as www.anova.es

INFORMATION ABOUT THIS MANUAL

Please pay attention to the information provided in this manual and on the appliance for your safety and that of others.

- This manual contains instructions for use and maintenance.
- Take this manual with you when you go to work with the machine.
- The contents are correct at the time of printing.
- The rights to make changes at any time are reserved without affecting our legal responsibilities.
- This manual is considered an integral part of the product and must remain with it in case of loan or resale.
- Ask your dealer for a new manual in case of loss or damage.

READ THIS MANUAL CAREFULLY BEFORE USING THE MACHINE



To ensure that your machine provides the best results, please read the usage and safety regulations carefully before using it.

OTHER WARNINGS:

Incorrect use could cause damage to the machine or other objects.

The adaptation of the machine to new technical requirements could cause differences between the content of this manual and the purchased product.

Read and follow all instructions in this manual. Failure to follow these instructions could result in serious personal injury.

INDEX

1. USER WARNINGS.....	4
1.1. Mounting Warnings.....	4
1.2. security messages.....	4
2. PRODUCT PARTS.....	5
3. FUNCTIONING	6
3.1. Precautions for safe use	6
3.2. Mounting and dismounting of tires	7

1. USER WARNINGS

Caveat

Please read the manual carefully. The manufacturer and/or distributor provide this parts drawing only as a reference guide. No representation or warranty of any kind is made to the purchaser that he or she is qualified to repair or replace any part of the product. All repairs and replacement of parts must be performed by certified and authorized technicians, not by the purchaser. Buyer assumes all risk and liabilities arising from your repairs to the original product or your installation of replacement parts.

1.1. Mounting Warnings

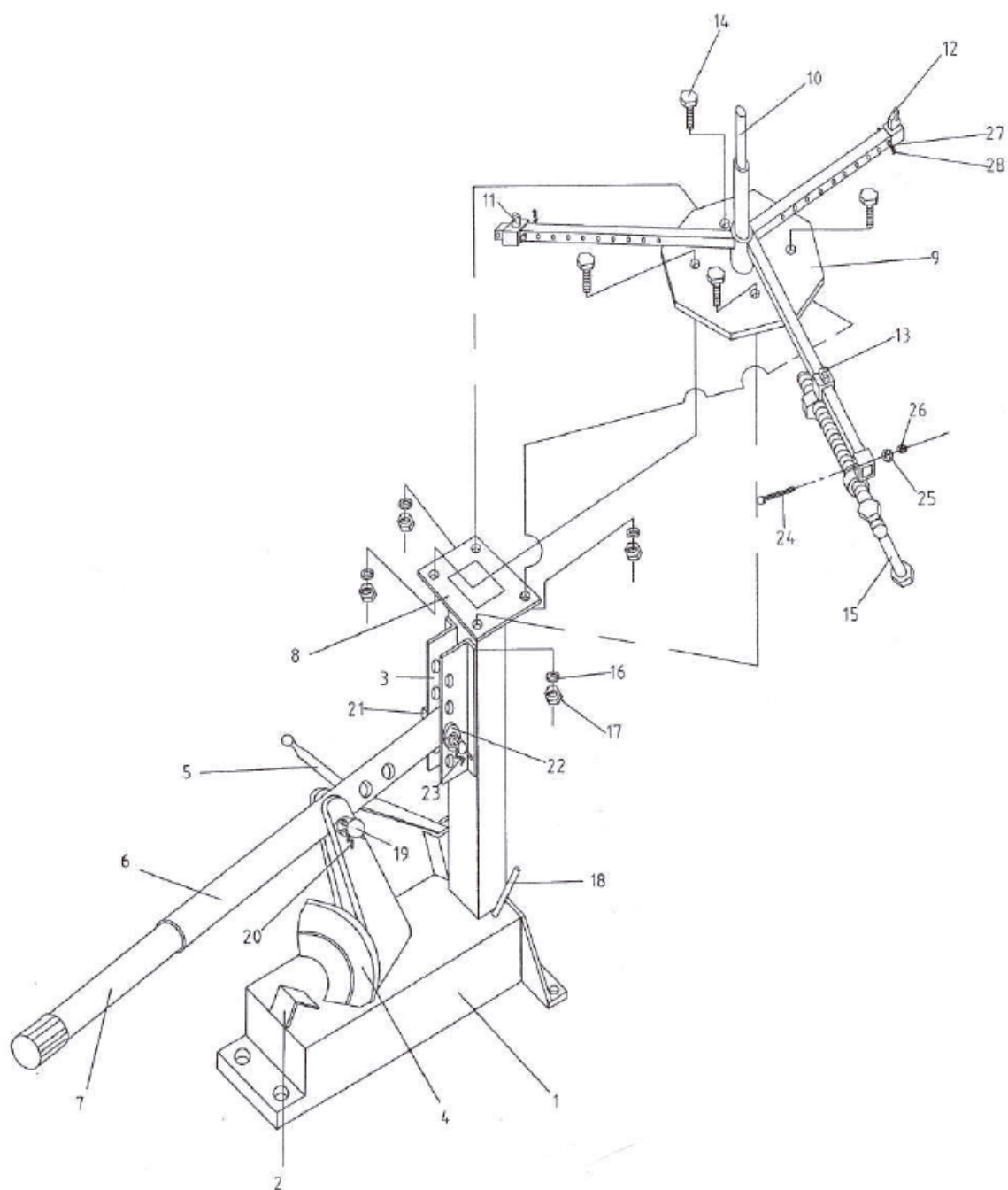
1. Locate and identify all parts and product based on the list and illustration. Using first four hex bolts, four washers and four hex nuts (17) attach the wheel mounting bracket (9) to the column (8).
2. Put the wedge holder (6) in the middle of the handle holder (3), and then use the bolt (21), washer (22) and pin (23) to connect the handle holder (3) with the handle holder wedge (6).
3. Connect the pneumatic tire changer wedge (4) to the wedge support (6) using the bolt (19) and the bolt pin (20).

1.2. Security messages

Read all instructions before using this machine.

1. Keep the work area clean and safe. Make sure the area is not cluttered and is well lit. Do not use in wet areas. Do not expose to rain.
2. Keep bystanders out of the work area. Do not allow unauthorized persons (especially children) to use the product or other tools.
3. Always use the right tool for the job. Do not use any tool, including this product, for purposes for which it was not designed.
4. Wear proper safety clothing and equipment. Follow the information on the warning labels related to PPE: shoes, eye protection and gloves. Never wear loose clothing, jewelry, or long hair that could get caught in the equipment.
5. Maintain proper posture and balance at all times. Do not stand on the product as you could be seriously injured if it tips over or falls.
6. Check for damaged or missing parts before each use. Inspect for damaged or missing parts to ensure unit is operating safely and properly. Repair or replacement of any damaged or missing part must be performed by an authorized service center, and unless otherwise stated in this manual, use only identical replacement parts.
7. Do not use this tool if you are tired or under the influence of medication or other substances.

2. PRODUCT PARTS



PART NUMBER	DESCRIPTION	PCS
1	BASE	1
2	TRIANGLE STOP	1
3	HANDLE SUPPORT	1
4	TIRE CUTTING WEDGE	1
5	ASSEMBLY-DIASSEMBLY TOOL	1
6	WEDGE SUPPORT	1
7	EXTENDABLE HANDLE	1
8	COLUMN	1
9	WHEEL MOUNTING SUPPORT	1
10	CENTER BAR	1
11	TIRE FIXATOR	1
12	TIRE FIXATOR	1
13	THREADED RIM FIXER	1
14	HEXAGON SCREWS	4
15	WHEELS FIXING SCREW	1
16	WASHER	4
17	HEX NUT	4
18	HOOK HANDLE	1
19	BOLT	1
20	PIN PIN	1
21	BOLT	1
22	WASHER	1
23	BARRETTE	1
24	SMALL SCREW	1
25	WASHER	1
26	HEX NUT	1
27	BOLT	2
28	PIN PIN	2

3. FUNCTIONING

3.1. Precautions for safe use

Release the air pressure in the tire before demounting, use rubber lubricant (not included), this makes it much easier to demount and mount the tires.

1. To release the tire bead from the rim, place the tire with the triangular stopper on the base (1) against the rim to prevent the tire from slipping.
2. Place the tire changer wedge (4) on the tire against the rim. Note that as you work with different tire sizes, you may need to use the different holes in the wedge bracket (6) to adjust the height of the breaker shoe. Adjust breaker shoe height by removing pin (21), moving shoe up or down, then reinserting pin.
3. Insert the end of the extension handle (7) into the wedge support (6) and push down, causing the tire changer wedge (4) to force the bead off the edge. If the bead doesn't come out all at once, rotate the tire and repeat at different places.
4. Flip the tire over and repeat for the other side.

3.2. Mounting and dismounting of tires

1. After separating them, place the tire on the center bar (10).
2. With the tire securely fastened, insert the flat end of the mounting/demounting tool (5) between the tire and the rim. Pull the bar toward you through the tire to force the bead onto the rim.
3. Move the bar around the center bar to completely dismount the bead.
4. Pull the lower bead up and place the flat end of the mount/demount tool between the tire and the rim as before and repeat to completely remove the tire from the rim.
5. To mount the tire, re-lubricate both tire beads. Place the tire on top of the rim. It should be possible to push the lower bead onto the rim without the mount/demount tool.

After the lower bead is on the rim, push the tire forward and down and hook the end of the mount/demount bar over the edge of the rim.

Press down on the tire to keep it under the rim and with the other hand pull the bar counterclockwise around the center pedestal until the bead begins to mount.

Continue around the rim until the entire tire rides over the rim.

Push down on the tire so it doesn't seat before it is fully installed.